

Croix Sand
55,3 cm x 100 cm
Dayton Sand
55,3 cm x 100 cm
Dayton Sand
59,6 cm x 59,6 cm

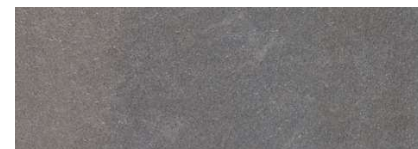


WALL TILES / piedras / stonas

Dayton

Croix

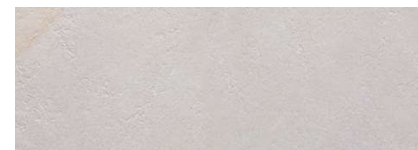
Revestimiento Monoporosa Rectificado / Rectified Wall Tiles



DAYTON GRAPHITE
33,3 cm x 100 cm x 0,92 cm • 13" x 40" 100295151 G261
PERFIL DAYTON GRAPHITE
1,5 cm x 33,3 cm • 6" x 13" 100295437 G77
Butech: Odorstuk Rapid Cemento 100296449



CROIX GRAPHITE
33,3 cm x 100 cm x 0,92 cm • 13" x 40" 100295141 G271
Butech: Odorstuk Rapid Cemento 100296449



DAYTON SAND
33,3 cm x 100 cm x 0,92 cm • 13" x 40" 100295161 G261
PERFIL DAYTON SAND
1,5 cm x 33,3 cm • 6" x 13" 100295453 G77
Butech: Odorstuk Rapid Beige 100296808



CROIX SAND
33,3 cm x 100 cm x 0,92 cm • 13" x 40" 100295113 G271
Butech: Odorstuk Rapid Beige 100296808

EMBALAJE / PACKING

MODELO / MODEL	PZ/CJ	M2/CJ	*KG/CJ	CJ/PAL	M2/PAL	*KG/PAL	BUTECH
Dayton	5	1,00	28,55	44	73,20	1250,20	Fi-one n / One-Block Premium
Croix	5	1,00	28,55	44	73,20	1250,20	
Perfil 1,5 cm x 33,3 cm	30	0,30	3,72	42	12,50	150,24	

*Valores aproximados. *Approximated values.



PAVIMENTO COMBINABLE: SERIE DAYTON, 55,3 cm x 55,3 cm / 21" x 21"
FLOOR TILES COMBINATIONS: DAYTON SERIE 55,3 cm x 55,3 cm / 21" x 21"