



fitwall®
MINERAL DECORATIVE PANELS

KRION
PORCELANOSA Grupo

fitwall[®]
MINERAL DECORATIVE PANELS

KRION
PORCELANOSA Grupo

index

CONCRETE SERIES

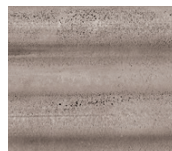
WAVE · 14



White Sand

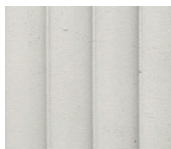


Ocre Sand

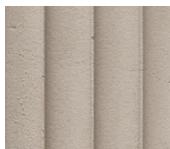


Grey Sand

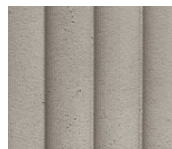
ARCO · 20



White Sand

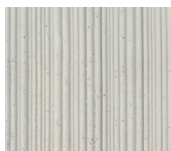


Ocre Sand



Grey Sand

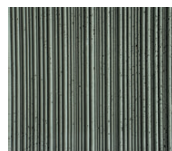
ROLLING · 26



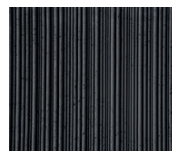
White Sand



Ocre Sand



River Sand



Velvet Black

COTTO SERIES

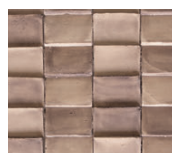
MATTONELLA · 32



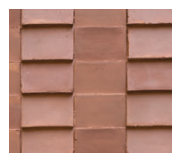
White Clay



Paglierino



Bruciato



Rosato



Anticato

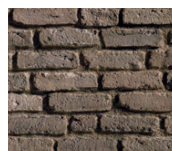
MATTONI · 38



Rosso



Crudo



Antracite



Bianco Solido

WOOD SERIES

DOGHE · 44



Roble
Natura



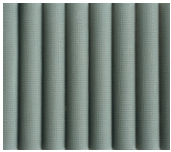
Nogal
Americano



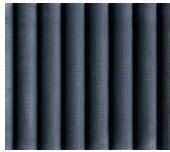
Roble
Murano

CREATIVE SERIES

WILLOW · 50



Velvet Green



Velvet Blue



Velvet Black

PALM · 56



Mediterranean



Caribbean

SHADES · 62



White Sand



Vanilla Sand



Dark Sand

OZ · 68



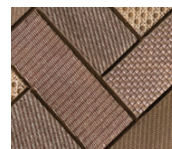
White Clay



Mediterranean



Red Clay



Yellow Clay



Velvet Brown

STONE SERIES

MUR · 74



Rock White



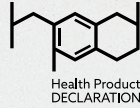
Rock Cream

Fitwall® panels are decorative coverings which can recreate textures and volumes with great realism to the eye and to the touch. Designed for covering vertical facings of walls, units and commercial and residential fittings, they can also be installed on ceilings and horizontal coverings such as non-functional decorative elements.

The composition of the panels has been developed exclusively by Krion Porcelanosa Group. This material contains a large quantity of minerals, bonded with resin which incorporates recycled PET. Thanks to this composition, Fitwall® offers good safety performance in fire resistance, impermeability and low emission of volatile organic compounds.



Fitwall® panels are produced from a unique mixture of different materials. The balance between these elements is decisive for achieving the maximum performance in their use.



8

In their composition, Fitwall® panels incorporate a mineral load of over 50% with a high technical value, which contribute distinctive properties with regard to:

- Reduced use of resin in manufacturing.
- Improved flame retardant properties of the panel.
- Resistance and flexibility throughout the panel.













MINIMUM 3% RECYCLED
CONTENT POST INDUSTRIAL
AND/OR POST-CONSUMER

SCS Global Service, a leading North American independent entity in environmental certifications, has verified that Fitwall® panels contain a minimum of 3% PET in their composition, largely from recycled plastic waste, thereby demonstrating commitment to more sustainable and environmentally friendly production.

Finally, the inorganic pigments, acidic enamel and water-based dyes give Fitwall® panels a great natural appearance.

Fitwall® panels have a careful aesthetic based on original creations and also present a series of attractive properties that provide them with the functionality to stop being just a decorative panel, such as impact resistance, fire resistance, reparability and non-porousness. In addition, it contributes as an acoustic insulator and protector.

-  Mineral composition
-  100% realistic finishes
-  Light weight
-  Flexibility
-  Impact resistance
-  Fire resistance
-  Dry construction
-  Resistance to dry heat
-  Repairable
-  Reusable

10





At Krion Porcelanosa Grupo, our mission is to create design products that meet the quality requirements of today's market, that are technologically advanced and that are also linked to values associated with sustainability. We understand sustainability as a rational system by which we minimize the use of resources, opting to use recycled materials and low energy consumption, offering the market durable and repairable products. We want to be a part of the chain that promotes the circular economy, basing our purpose on the research and development of new solutions.

11

EPUPRR

For the manufacture of the Fitwall® panels, Krion Porcelanosa Grupo S.A.U. has committed to rational sustainability through EPUPR technology, and is a pioneer in the use of a resin with an exclusive formulation.

This incorporates recycled polyethylene terephthalate (PET), contributing to minimising the consumption of the planet's natural resources.

Fitwall® panels are designed to cover walls, ceilings and furniture, creating different and attractive spaces in an easy way.



Homes



Retail



Hotel



Restaurants,
bars and cafés



Offices



Public
buildings



Health
service



Transport



Walls



Ceilings



Units



Equipment



Fitwall® panels come in different finishes and colors, but if you do not find the one that suits your space, Fitwall® has the Raw White finish that is ready to be painted the color you want.



Krion recommends that Fitwall® panels are installed by a qualified professional, as described in the installation manuals, which is vital for a correct and durable installation.



For the installation of Fitwall® panels, accessory materials such as fillers, paints or dyes are used. If you have any doubts, please consult the specific data sheet of each model.

wave

14

Subtle and delicate forms create Wave, a panel of contrasts combining smooth curves with the texture of details. Wave creates sophisticated and timeless spaces, seeking care for detail in each element.

Design created by Estudi{H}ac.





Wave · White Sand

1295 x 2590 mm · 100314038

1295 x 3290 mm · 100287549



Wave · Ocre Sand

1295 x 2590 mm · 100314054

1295 x 3290 mm · 100293371



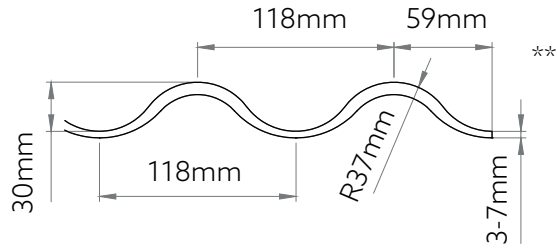
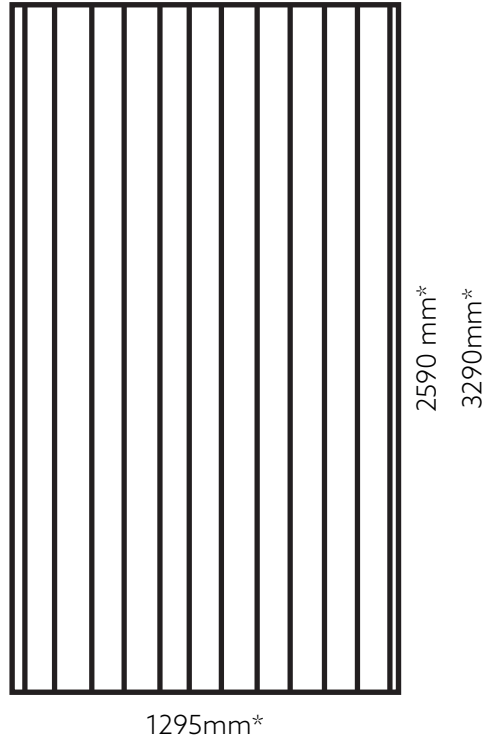
Wave · Grey Sand

1295 x 2590 mm · 100314121

1295 x 3290 mm · 100293337

SpA
hotel

17



PAINT

White Sand	Ocre Sand	Grey Sand
FW P001	FW P004	FW P007

(*) Approximate measurements. Nominal measurement tolerances are ±20mm on the long side and ±10mm on the short side. (**) Approximate measurements. Design height tolerance ±5mm.

arco

20

The grandeur of the monuments of Roman architecture have served as an inspiration for designing Arco. The Arco model is ideal for creating atmospheres with subtle, delicate decoration, which make an impact on everyone.

Design created by Estudi{H}ac.





Arco · White Sand

1185 x 2590 mm · 100314068

1185 x 3290 mm · 100293356



Arco · Ocre Sand

1185 x 2590 mm · 100314076

1185 x 3290 mm · 100293299



Arco · Grey Sand

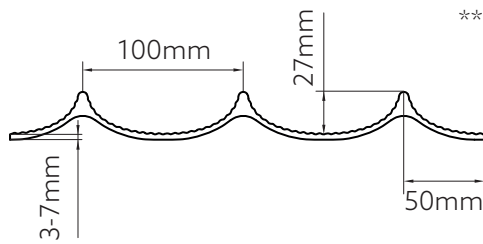
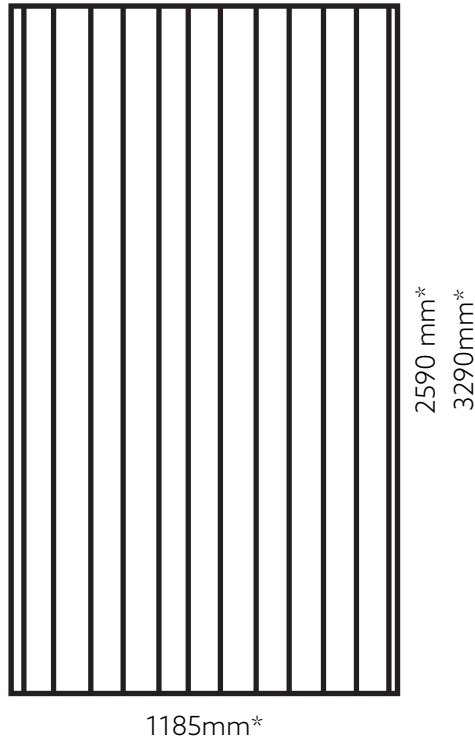
1185 x 2590 mm · 100314064

1185 x 3290 mm · 100293381



100293299 · Concrete Series · Arco Ocre Sand





PAINT

White Sand	Ocre Sand	Grey Sand
FW P001	FW P004	FW P007

(*) Approximate measurements. Nominal measurement tolerances are $\pm 20\text{mm}$ on the long side and $\pm 10\text{mm}$ on the short side. (**) Approximate measurements. Design height tolerance $\pm 5\text{mm}$.

rolling

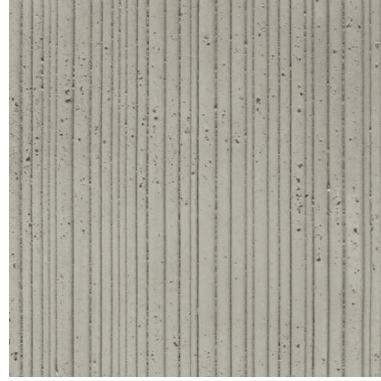
Inspired by the beauty given to us by nature, we have designed Rolling, a panel which stands out due to its exotic and natural aesthetic. Ideal for use in spaces which seek to convey peace, with a natural, timeless decoration.

Design created by Estudi{H}ac.



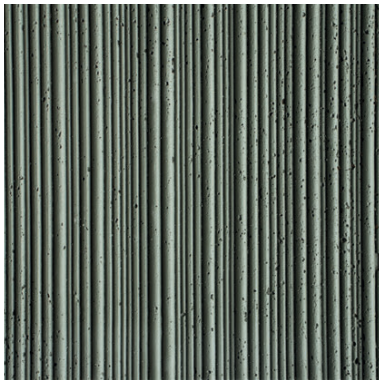


Rolling · White Sand
1295 x 2590 mm · 100314071
1295 x 3290 mm · 100293357



Rolling · Ocre Sand
1295 x 2590 mm · 100314113
1295 x 3290 mm · 100293333

28



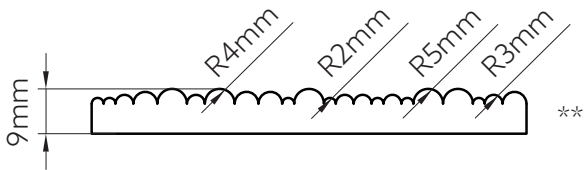
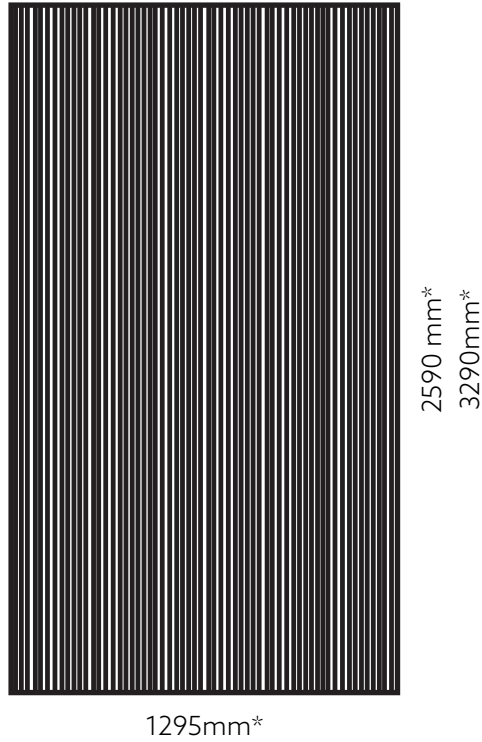
Rolling · River Sand
1295 x 2590 mm · 100314114
1295 x 3290 mm · 100293279



Rolling · Velvet Black
1295 x 2590 mm · 100314130
1295 x 3290 mm · 100293370







PAINT

White Sand	Ocre Sand	River Sand	Velvet Black
FW P001	FW P004	FW P026	FW P013

(*) Approximate measurements. Nominal measurement tolerances are ±20mm on the long side and ±10mm on the short side. (**) Approximate measurements. Design height tolerance ±5mm.

mattonella

32

Taking traditional aesthetics as an inspiration, we have designed Mattonella, a panel with an appearance similar to fired clay which offers a unique decorative potential. Mattonella is a combination of tradition and modernity, giving spaces a creative and timeless atmosphere.

Design created by Estudi{H}ac.





Mattonella · White Clay

1145 x 2595 mm · 100314065

1145 x 3265 mm · 100293343



Mattonella · Paglierino

1145 x 2595 mm · 100314066

1145 x 3265 mm · 100293391



Mattonella · Bruciato

1145 x 2595 mm · 100314092

1145 x 3265 mm · 100293338



Mattonella · Rosato

1145 x 2595 mm · 100314085

1145 x 3265 mm · 100293372



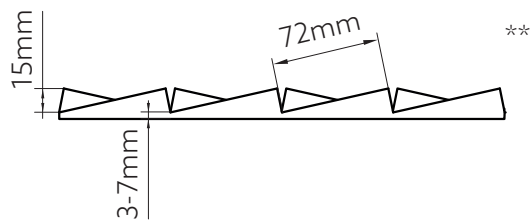
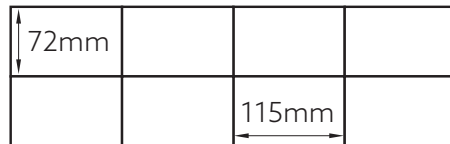
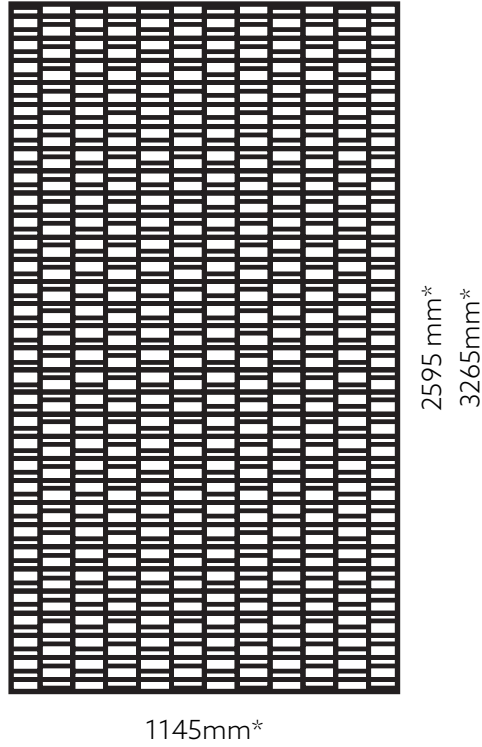
Mattonella · Anticato

1145 x 2595 mm · 100314084

1145 x 3265 mm · 100293392







PAINT

White Clay	Paglierino	Bruciato	Rosato	Anticato
FW P025	FW P009 FW P010	FW P007 FW P008	FW P014 FW P015	FW P016 FW P018

(*) Approximate measurements. Nominal measurement tolerances are $\pm 20\text{mm}$ on the long side and $\pm 10\text{mm}$ on the short side. (**) Approximate measurements. Design height tolerance $\pm 5\text{mm}$.

mattoni

38

Exposed brick walls have an innate charm and can be used for unique décor. Based on old Dutch bricks from last century, this panel creates an industrial atmosphere with enormous potential.





Mattoni · Rosso
3220 x 1300 mm · 100318212



Mattoni · Crudo
3220 x 1300 mm · 100318215

40



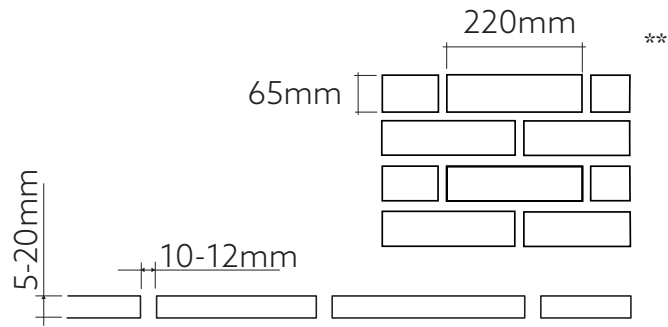
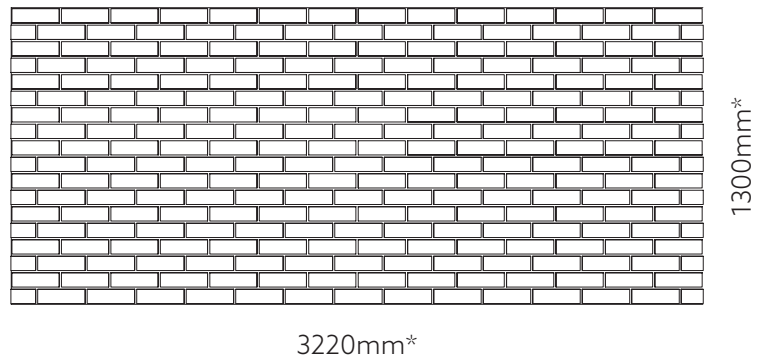
Mattoni · Antracite
3220 x 1300 mm · 100318241



Mattoni · Bianco
3220 x 1300 mm · 100318235







PAINT

Rosso	Crudo	Antracite	Bianco
FW P031	FW P040	FW P037	FW P030
FW P032	FW P041	FW P038	
FW T020	FW P042	FW P039	
	FW T020	FW T020	

(*) Approximate measurements. Nominal measurement tolerances are $\pm 20\text{mm}$ on the long side and $\pm 10\text{mm}$ on the short side. (**) Approximate measurements. Design height tolerance $\pm 5\text{mm}$.

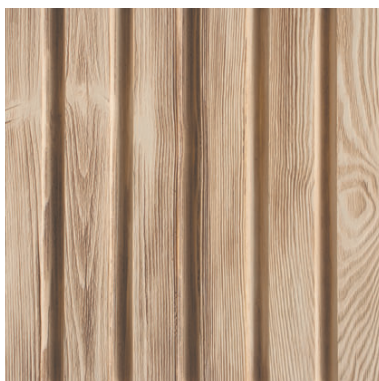
doghe

44

With a similar appearance to natural wood, Doghe is noble and sophisticated, a decorative panel which conveys elegance. It offers spaces the warmth and comfort of natural wood, being an excellent option for places of relaxation.

Design created by Estudi{H}ac.

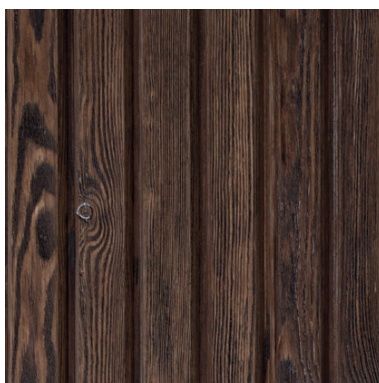




Doghe · Roble Natura

1285 x 2590 mm · 100314093

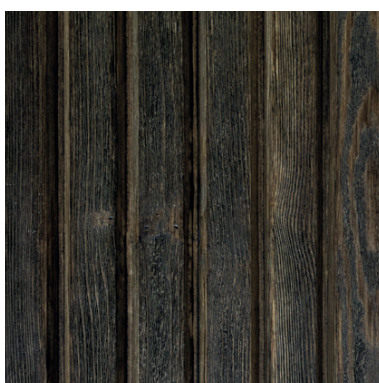
1285 x 3290 mm · 100293376



Doghe · Nogal Americano

1285 x 2590 mm · 100314086

1285 x 3290 mm · 100293375

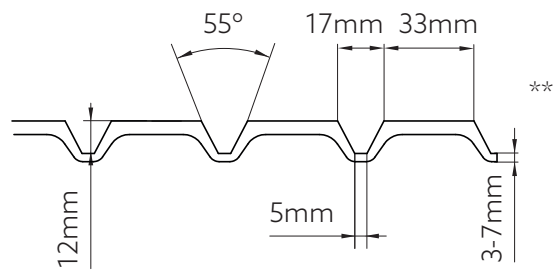
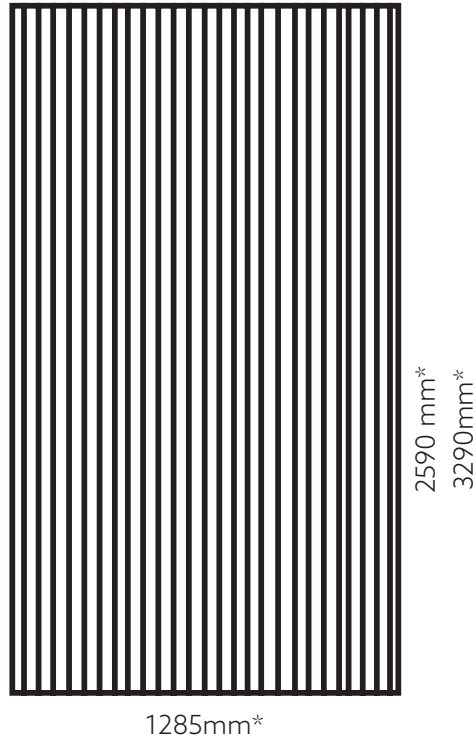


Doghe · Roble Murano

1285 x 2590 mm · 100314075

1285 x 3290 mm · 100293395





PAINT

Roble Natura	Nogal Americano	Roble Murano
FW T021	FW T020	FW T019

(*) Approximate measurements. Nominal measurement tolerances are $\pm 20\text{mm}$ on the long side and $\pm 10\text{mm}$ on the short side. (**) Approximate measurements. Design height tolerance $\pm 5\text{mm}$.

willow

Delicacy and strength give value to this model and place it at the vanguard of design. Willow emits peaceful sensations for creating welcoming environments. Excellent for use in spaces where a fresh, delicate atmosphere is sought.

Design created by Estudi{H}ac.

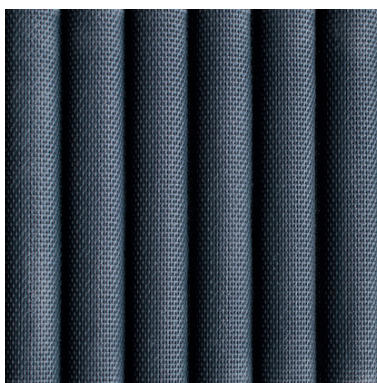




Willow · Velvet Green

1285 x 2590 mm · 100314100

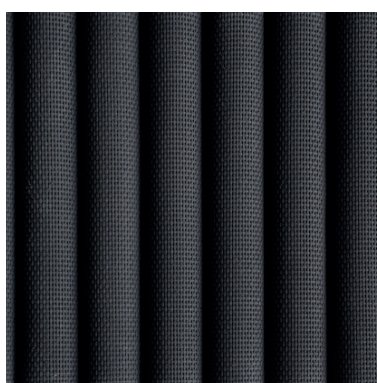
1285 x 3290 mm · 100293347



Willow · Velvet Blue

1285 x 2590 mm · 100314096

1285 x 3290 mm · 100293413

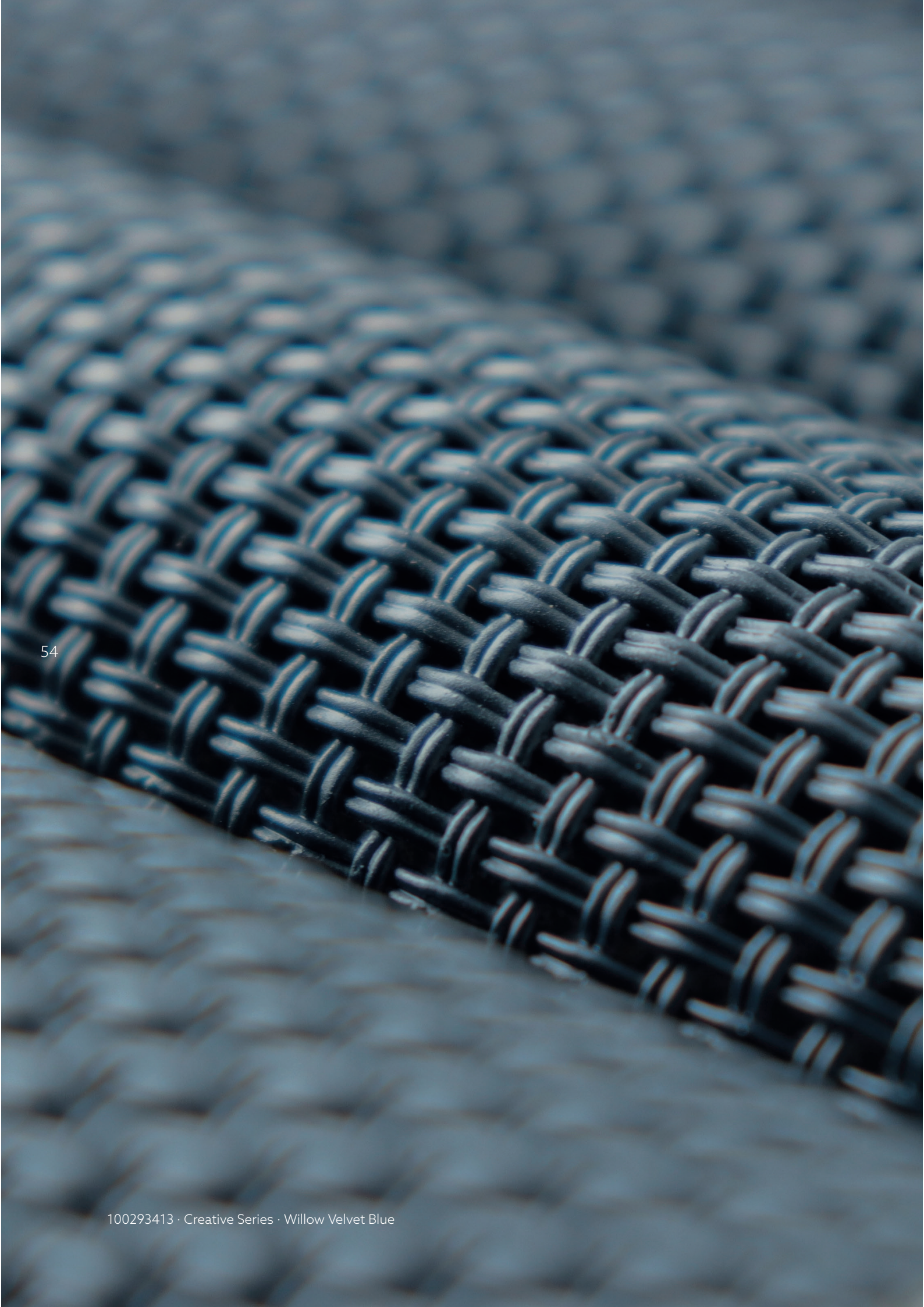


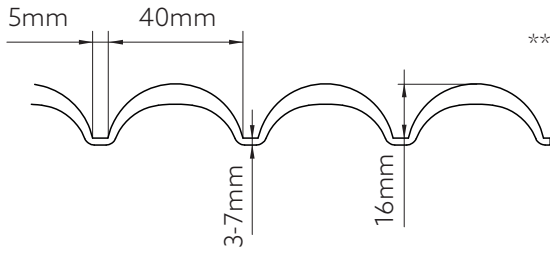
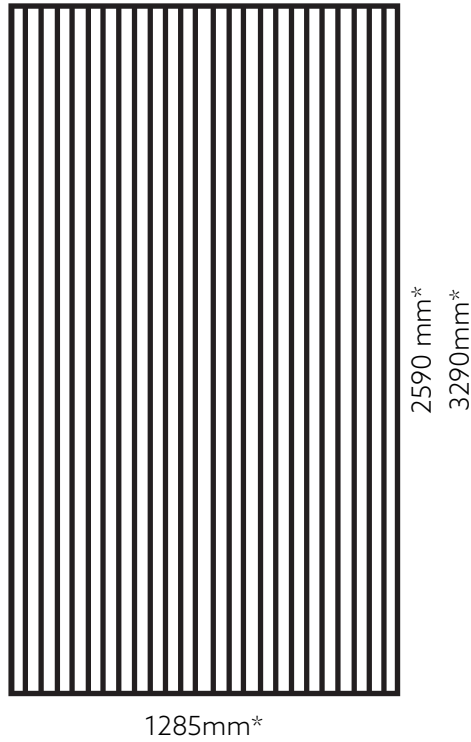
Willow · Velvet Black

1285 x 2590 mm · 100314094

1285 x 3290 mm · 100293422







PAINT

Velvet Green	Velvet Blue	Velvet Black
FW P027	FW P028	FW P013

(*) Approximate measurements. Nominal measurement tolerances are ±20mm on the long side and ±10mm on the short side. (**) Approximate measurements. Design height tolerance ±5mm.

palm

56

Passion for details has led us to design Palm, a piece with a braided appearance which gives volume to decoration. The application of Palm changes the aesthetic and personality of any space with extraordinary ease.

Design created by Estudi{H}ac.





Palm · Mediterranean

1183 x 2532 mm · 100314079

1183 x 3201 mm · 100293415



Palm · Caribbean

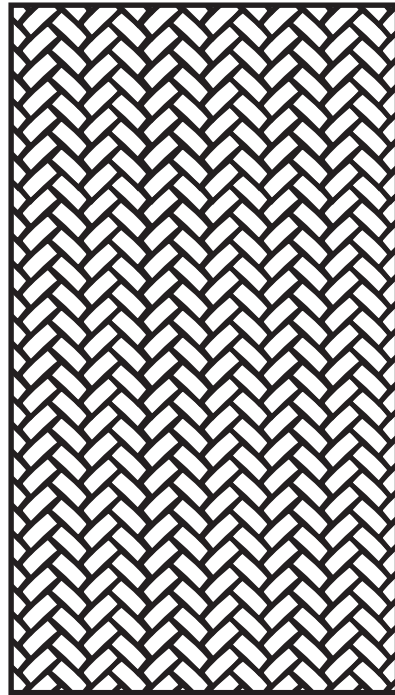
1183 x 2532 mm · 100314101

1183 x 3201 mm · 100293414



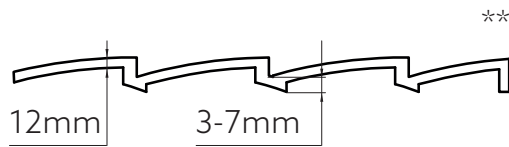
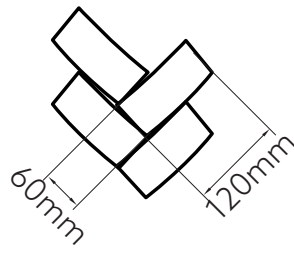
100293415 · Creative Series · Palm Mediterranean





1183mm*

2532 mm*
3201mm*



PAINT

Mediterranean

Caribbean

FW P011

FW P017
FW P009

(*) Approximate measurements. Nominal measurement tolerances are $\pm 20\text{mm}$ on the long side and $\pm 10\text{mm}$ on the short side. (**) Approximate measurements. Design height tolerance $\pm 5\text{mm}$.

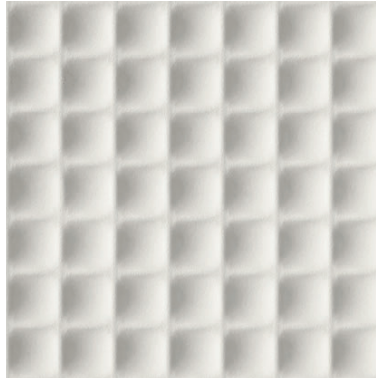
shades

62

Contemporary and sophisticated, Shades is a commitment to conveying sensations and lingering in the mind. Using Shades to decorate spaces is perfect if seeking to create distinctive atmospheres which linger people's minds.

Design created by Estudi{H}ac.

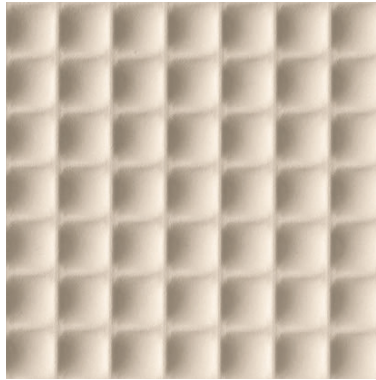




Shades · White Sand

2520 x 1228 mm · 100314120

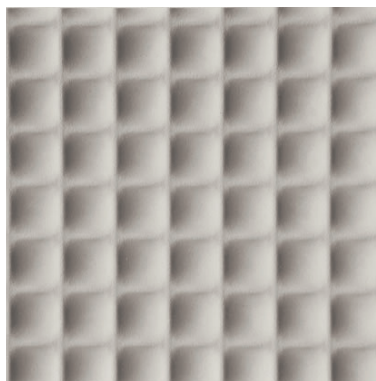
3165 x 1228 mm · 100293423



Shades · Vanilla Sand

2520 x 1228 mm · 100314110

3165 x 1228 mm · 100293416

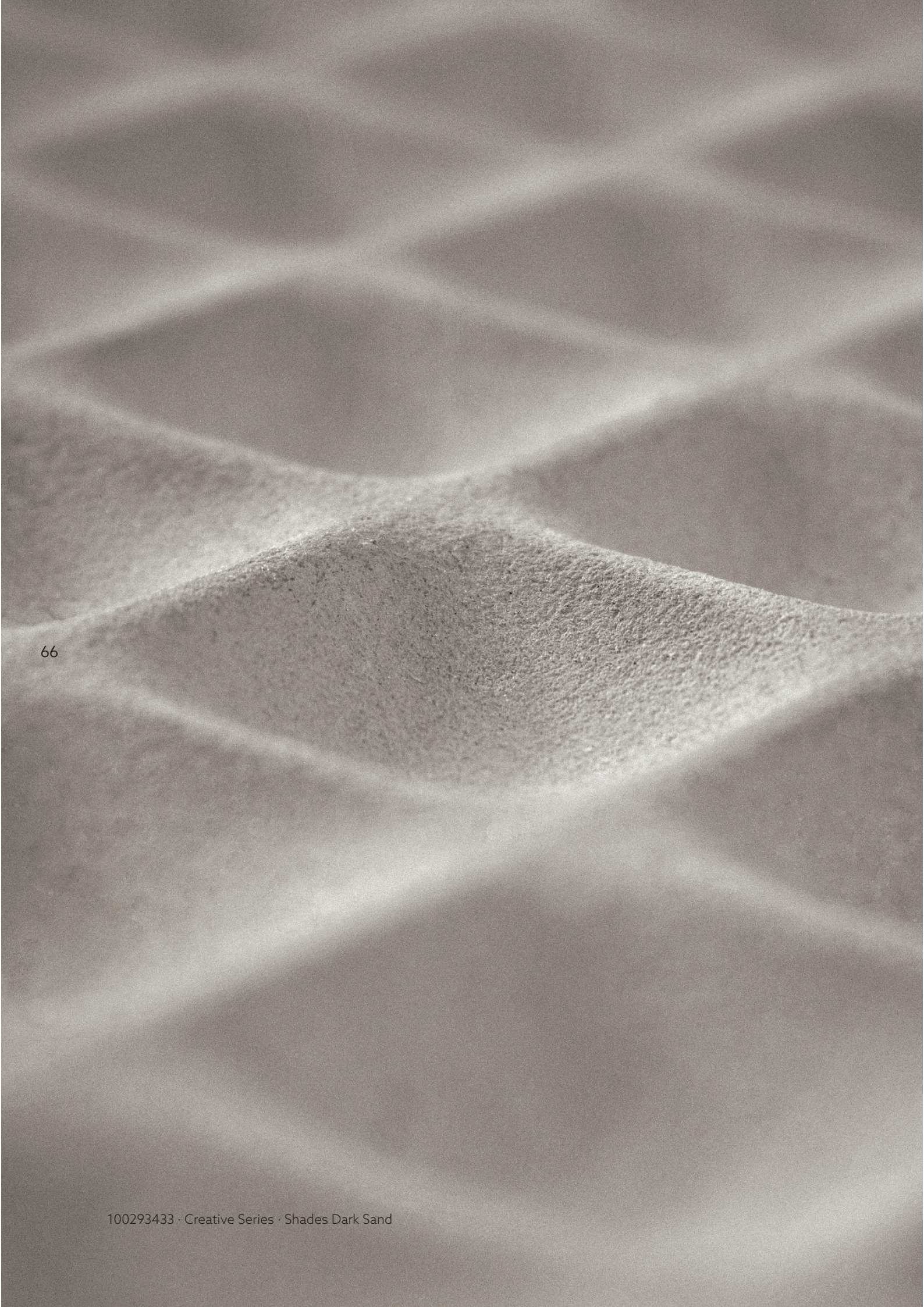


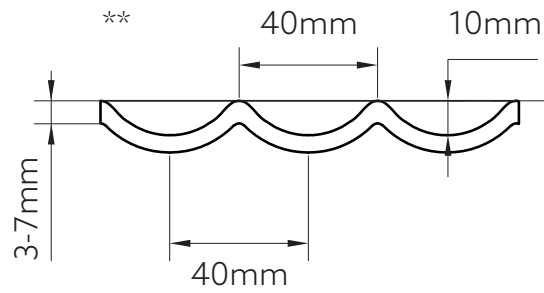
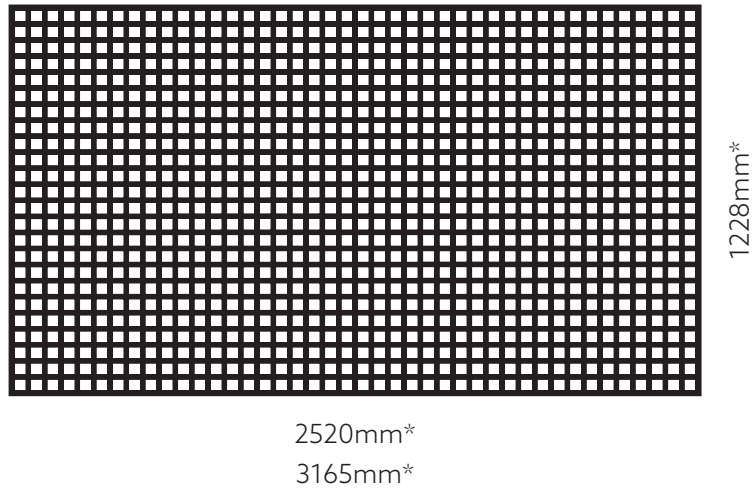
Shades · Dark Sand

2520 x 1228 mm · 100314102

3165 x 1228 mm · 100293433







PAINT

White Sand	Vanilla Sand	Dark Sand
FW P001	FW P010	FW P029

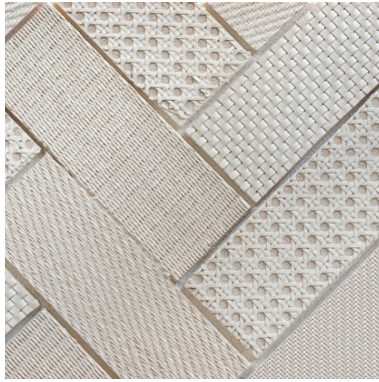
(*) Approximate measurements. Nominal measurement tolerances are $\pm 20\text{mm}$ on the long side and $\pm 10\text{mm}$ on the short side. (**) Approximate measurements. Design height tolerance $\pm 5\text{mm}$.

OZ

Different textures make up Oz, a striking combination which is notable for its originality and ability to transform any space. It is the perfect decorative panel for premises seeking to project a modern image, such as restaurants or cocktail bars.

Design created by Estudi{H}ac.





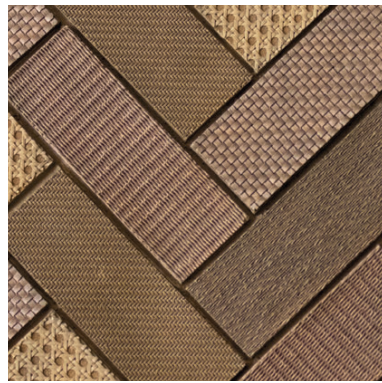
Oz · White Clay
3085 x 1230 mm · 100293424



Oz · Mediterranean
3085 x 1230 mm · 100293434



Oz · Red Clay
3085 x 1230 mm · 100293435



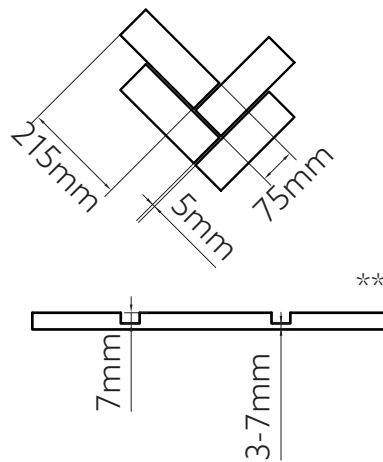
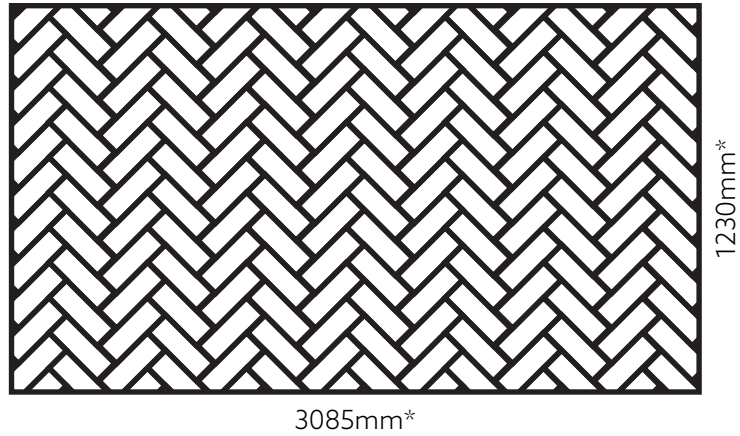
Oz · Yellow Clay
3085 x 1230 mm · 100293444



Oz · Velvet Brown
3085 x 1230 mm · 100293441







PAINT

White Clay	Mediterranean	Red Clay	Yellow Clay	Velvet Brown
FW P025	FW P011	FW P014 / FW P016 / FW P022 / FW P018 / FW P017	FW P018 FW P022	FW P008

(*) Approximate measurements. Nominal measurement tolerances are $\pm 20\text{mm}$ on the long side and $\pm 10\text{mm}$ on the short side. (**) Approximate measurements. Design height tolerance $\pm 5\text{mm}$.



mur

74

Inspired by masonry walls made with French stone, the spectacular texture and tone of its finish will contribute to an incredible wall.



100318213 · Stone Series · Mur Rock White



Mur · Rock White
3260 x 1290 mm · 100318213

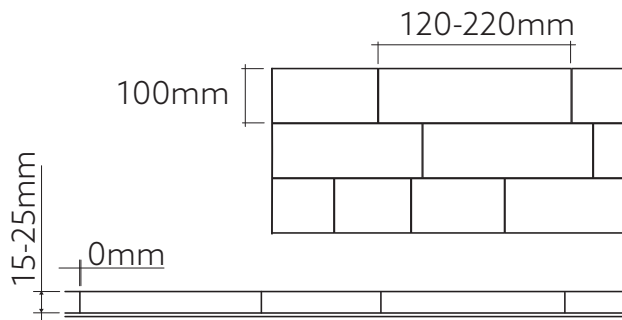
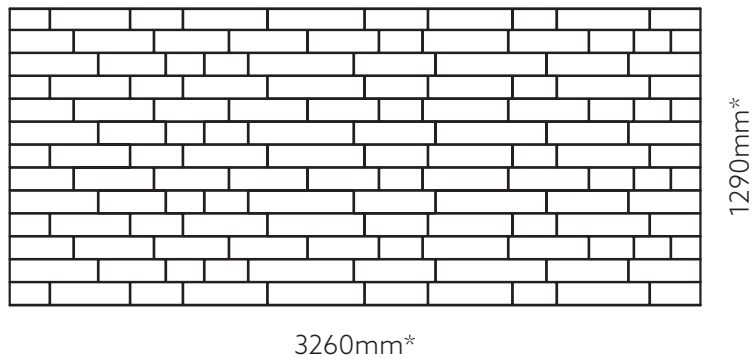


Mur · Rock Cream
3260 x 1290 mm · 100318204



100318204 · Stone Series · Mur Rock Cream





PAINT

Rock White	Rock Cream
FW P033	FW P035
FW P034	FW P036

(*). Approximate measurements. Nominal measurement tolerances are $\pm 20\text{mm}$ on the long side and $\pm 10\text{mm}$ on the short side. (**). Approximate measurements. Design height tolerance $\pm 5\text{mm}$.

codes

PANELS	DIMENSIONS	GROUP	SAP
Concrete Series			
WAVE. White Sand	1295 x 2590 mm	BR	100314038
	1295 x 3290 mm	B	100287549
WAVE. Ocre Sand	1295 x 2590 mm	BR	100314054
	1295 x 3290 mm	B	100293371
WAVE. Grey Sand	1295 x 2590 mm	BR	100314121
	1295 x 3290 mm	B	100293337
ARCO. White Sand	1185 x 2590 mm	BR	100314068
	1185 x 3290 mm	B	100293356
ARCO. Ocre Sand	1185 x 2590 mm	BR	100314076
	1185 x 3290 mm	B	100293299
ARCO. Grey Sand	1185 x 2590 mm	BR	100314064
	1185 x 3290 mm	B	100293381
ROLLING. White Sand	1295 x 2590 mm	AR	100314071
	1295 x 3290 mm	A	100293357
ROLLING. River Sand	1295 x 2590 mm	AR	100314114
	1295 x 3290 mm	A	100293279
ROLLING. Ocre Sand	1295 x 2590 mm	AR	100314113
	1295 x 3290 mm	A	100293333
ROLLING. Velvet Black	1295 x 2590 mm	AR	100314130
	1295 x 3290 mm	A	100293370
Cotto Series			
MATTONELLA. Paglierino	1145 x 2595 mm	AR	100314066
	1145 x 3265 mm	A	100293391
MATTONELLA. Rosato	1145 x 2595 mm	AR	100314085
	1145 x 3265 mm	A	100293372
MATTONELLA. Anticato	1145 x 2595 mm	AR	100314084
	1145 x 3265 mm	A	100293392
MATTONELLA. Bruciato	1145 x 2595 mm	AR	100314092
	1145 x 3265 mm	A	100293338
MATTONELLA. White Clay	1145 x 2595 mm	AR	100314065
	1145 x 3265 mm	A	100293343
MATTONI. Rosso	3220 x 1300 mm	B	100318212
MATTONI. Crudo	3220 x 1300 mm	B	100318215
MATTONI. Antracite	3220 x 1300 mm	B	100318241
MATTONI. Bianco	3220 x 1300 mm	B	100318235

PANELS	DIMENSIONS	GROUP	SAP
Wood Series			
DOGHE. Nogal Americano	1285 x 2590 mm	CR	100314086
	1285 x 3290 mm	C	100293375
DOGHE. Roble Murano	1285 x 2590 mm	CR	100314075
	1285 x 3290 mm	C	100293395
DOGHE. Roble Natura	1285 x 2590 mm	CR	100314093
	1285 x 3290 mm	C	100293376
Creative Series			
WILLOW. Velvet Black	1285 x 2590 mm	CR	100314094
	1285 x 3290 mm	C	100293422
WILLOW. Velvet Blue	1285 x 2590 mm	CR	100314096
	1285 x 3290 mm	C	100293413
WILLOW. Velvet Green	1285 x 2590 mm	CR	100314100
	1285 x 3290 mm	C	100293347
PALM. Caribbean	1183 x 2532 mm	CR	100314101
	1183 x 3201 mm	C	100293414
PALM. Mediterranean	1183 x 2532 mm	CR	100314079
	1183 x 3201 mm	C	100293415
SHADES. White Sand	2520 x 1228 mm	BR	100314120
	3165 x 1228 mm	B	100293423
SHADES. Dark Sand	2520 x 1228 mm	BR	100314102
	3165 x 1228 mm	B	100293433
SHADES. Vanilla Sand	2520 x 1228 mm	BR	100314110
	3165 x 1228 mm	B	100293416
OZ. Red Clay	3085 x 1230 mm	A	100293435
OZ. Yellow Clay	3085 x 1230 mm	A	100293444
OZ. White Clay	3085 x 1230 mm	A	100293424
OZ. Mediterranean	3085 x 1230 mm	A	100293434
OZ. Velvet Brown	3085 x 1230 mm	A	100293441
Stone Series			
MUR. Rock White	3260 x 1290 mm	B	100318213
MUR. Rock Cream	3260 x 1290 mm	B	100318204

codes

PUTTY	SAP
Fitmastic Fine 0,25kg	100294251
Fitmastic Fine 0,5kg	100294225
Fitmastic Fine 2kg	100294185
Fitmastic Fine 5kg	100294252
Fitmastic Rough 0,25kg	100294179
Fitmastic Rough 0,5kg	100294214
Fitmastic Rough 2kg	100294215
Fitmastic Rough 5kg	100287852
Aquafitmastic Rough 0,25kg	100294186
Aquafitmastic Rough 0,5kg	100294187
Aquafitmastic Rough 2kg	100294188
Aquafitmastic Rough 5kg	100294189
FW Hardener 15ml	100294162
FW Hardener 75ml	100287860

PAINT	SAP	PAINT	SAP
FW P001 100 ml	100294247	FW P001 300 ml	100287838
FW P004 100 ml	100294290	FW P004 300 ml	100294331
FW P007 100 ml	100294265	FW P007 300 ml	100294314
FW P008 100 ml	100294282	FW P008 300 ml	100294327
FW P009 100 ml	100294273	FW P009 300 ml	100294315
FW P010 100 ml	100294234	FW P010 300 ml	100294342
FW P011 100 ml	100294219	FW P011 300 ml	100294334
FW P013 100 ml	100294235	FW P013 300 ml	100294330
FW P014 100 ml	100294228	FW P014 300 ml	100287817
FW P015 100 ml	100294236	FW P015 300 ml	100294340
FW P016 100 ml	100294248	FW P016 300 ml	100294312
FW P017 100 ml	100294270	FW P017 300 ml	100294322
FW P018 100 ml	100294271	FW P018 300 ml	100294323
FW P022 100 ml	100294261	FW P022 300 ml	100294350
FW P025 100 ml	100287862	FW P025 300 ml	100294400
FW P026 100 ml	100294254	FW P026 300 ml	100294324
FW P027 100 ml	100294263	FW P027 300 ml	100294325
FW P028 100 ml	100294280	FW P028 300 ml	100294352
FW P029 100 ml	100304388	FW P029 300 ml	100304355
FW P030 100 ml	100331832	FW P030 300 ml	100331861
FW P031 100 ml	100331834	FW P031 300 ml	100331870
FW P032 100 ml	100331827	FW P032 300 ml	100331863
FW P033 100 ml	100331816	FW P033 300 ml	100331841
FW P034 100 ml	100331808	FW P034 300 ml	100331871
FW P035 100 ml	100331817	FW P035 300 ml	100331872
FW P036 100 ml	100331809	FW P036 300 ml	100331864
FW P037 100 ml	100331818	FW P037 300 ml	100331873
FW P038 100 ml	100331828	FW P038 300 ml	100331865
FW P039 100 ml	100331806	FW P039 300 ml	100331838
FW P040 100 ml	100331826	FW P040 300 ml	100331862
FW P041 100 ml	100331807	FW P041 300 ml	100331853
FW P042 100 ml	100331833	FW P042 300 ml	100331839
FW T019 100 ml	100294272	FW T019 300 ml	100294332
FW T020 100 ml	100294237	FW T020 300 ml	100294333
FW T021 100 ml	100294281	FW T021 300 ml	100294353

faq's



What is Fitwall® used for?

Covering:



Ceilings



Walls



Units

Where can it be installed?



Interior

On what type of support can it be installed?



Plasterboard



Brick



Wood

84

Does the support where the panel will be installed have to be prepared in any way?

The substrate must not be treated with any product. It must be ensured that the wall is flat, as it may be irregular.

Is it necessary to carry out works for the installation of this type of panel?

It is not necessary to carry out works due to installation being with mechanical fixings, that is, screws and blocks, depending on the substrate, and installing on an existing substrate.

Does installation take a long time?

Due to the size of the panels, a larger area is covered in a shorter time, therefore making the installation time relatively short. Full renovations may be carried out in a much shorter time than with other materials existing on the market.





Can it be curved?

It must be known that the panel adapts to the substrate where it will be installed. It is therefore possible to create curves, always taking into account the curve radii specified in the installation datasheets of each panel.

Does cleaning require any special product?

No, scrubbers and fabric cloths must be avoided, as they are rough materials which damage the surface of the material. We paper is used to eliminate the excess, a little soap, and a cloth to clean and dry the surface.



Ctra. Vila-real-Puebla de Arenoso (CV20) Km 1 · 12540 VILA-REAL (CASTELLÓN) SPAIN
Tel: (+34) 964 50 64 64 / krion@krion.com / www.krion.com

Legal Notice: The images, texts and data are owned by KRION SOLID SURFACE, S.A.U., with registered office at Carretera Vila-real - Puebla de Arenoso (CV-20), 12.540 Vila-real (Castellón). Its express, written consent is required for the use and dissemination, whether partial or full, of this content. KRION SOLID SURFACE, S.A.U. has exclusive usage rights over it in any form, and in particular the rights of reproduction, distribution, public communication and transformation. All this material is protected by intellectual property legislation and its misuse may be subject to penalty including criminal penalty.

KRION
PORCELANOSA Grupo

Ctra. Vila-real-Puebla de Arenoso (CV20) Km 1 · 12540 VILA-REAL (CASTELLÓN) SPAIN
Tel: (+34) 964 50 64 64 / krion@krion.com / www.krion.com