

It was crucial to develop a new type of Solid Surface for exteriors which could solve the technical challenges that this type of material posed, such as the anchor system or the contact or joint between sheets. PORCELANOSA Group took on the challenge and the result is KRION®, state-of-the-art Solid Surface, developed by SYSTEMPOOL, and the concealed clip fixing system from **butech**.

The quality of KRION® sheets offered by SYSTEMPOOL together with **butech**'s engineering and façade installation service, have already become international standards for projects with Solid Surface façades.



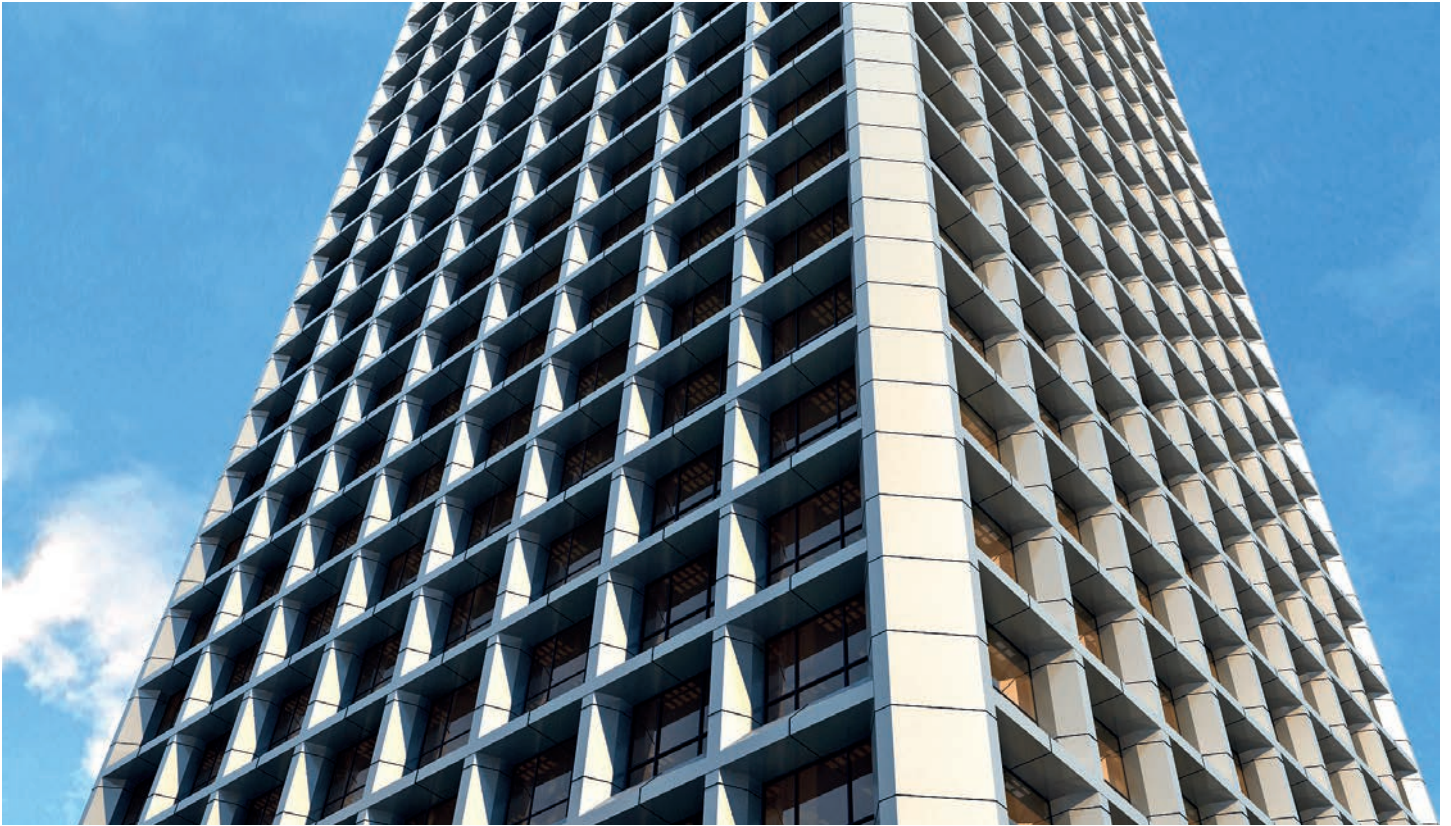
By appointment to
HRH The Prince of Wales
Manufacturer and Distributor of
Ceramic Tiles and Building Products
PORCELANOSA Group Limited

butech®



KRICN®
ventilated façade

butech and KRICON® broaden the possibilities of façade design.





Institut d'Optique d'Aquitaine, Talence, France.



Projects

PORCELANOSA Group is the international leader in Solid Surface façade design and installation. KRION®'s excellent features, together with the technical service offered by **butech** to customers and architects, has made it possible to carry out projects in virtually all continents. Commercial buildings, public buildings, hotels, and even private homes, have been conceived with this system.

A restrictive quality control policy in all elements involved in the façade, the experience of **butech**'s Technical Department in project development, and the expertise of our façade installation teams, make KRION® the best choice for this type of project.

Architects can now design buildings where light and KRION®'s white color are the main focus.



Bershka





Bershka shop in Madrid, Spain.
Architects: Castelveciana Arquitectura.

It is a 16 rectangular piece design which combined pieces in background and foreground. All the joints are lit, and the pieces in the foreground are backlit.

250 sqm of KRION® Stone sheets.
Module dimensions: 3,150 x 2,050 mm.



Bershka shop in Madrid, Spain.



Cherry Lab
樱桃实验室

GENERAL OPTICA

GENERAL OPTICA

GENERAL OPTICA

Bershka

prestamos
ACCIONES SOCIAL DIVINDE
91 3913 14

prestamos

数字广告牌





Bershka shop in Istanbul, Turkey.
Architects: Castelvejana Arquitectura.

The suggested façade design alternated horizontal strips in different sizes. A system with 70 mm lit joints, accessible from the outside, was used to highlight the horizontal alignment in the façade.

550 sqm of KRION® Stone sheets.
Variable module dimensions.



Bershka shop in Istanbul, Turkey.

Bershka

Bershka





Tour Raffinity building in Casablanca, Morocco.
Architect: Hembert Penaranda.

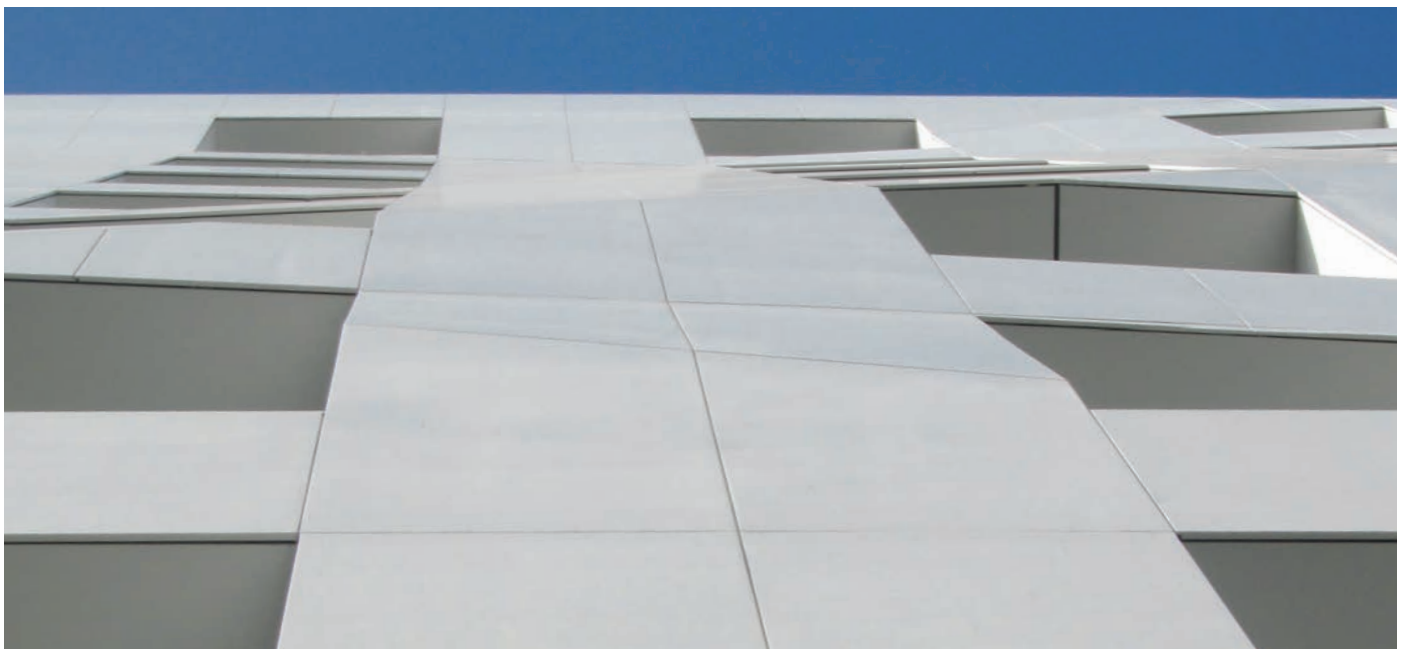
The building enclosure features a triangled pattern, suggesting the natural geometry of diamonds. For the project, sheets were created which interact with a screen-printed curtain wall.

1,500 sqm of KRION® Pure Lux Snow White.





Tour Raffinity building in Casablanca, Morocco.





Institut d'Optique d'Aquitaine, Talence, France.
Architects: Nicolas Ragueneau and Antoine Roux.

A project with a KRION ventilated façade can result in multiple solutions, thanks to the material's versatility and to the vast array of options it offers to the architect.

5,771 sqm of flat KRION® sheets.
Dimensions: 2,800 x 2,700 mm.

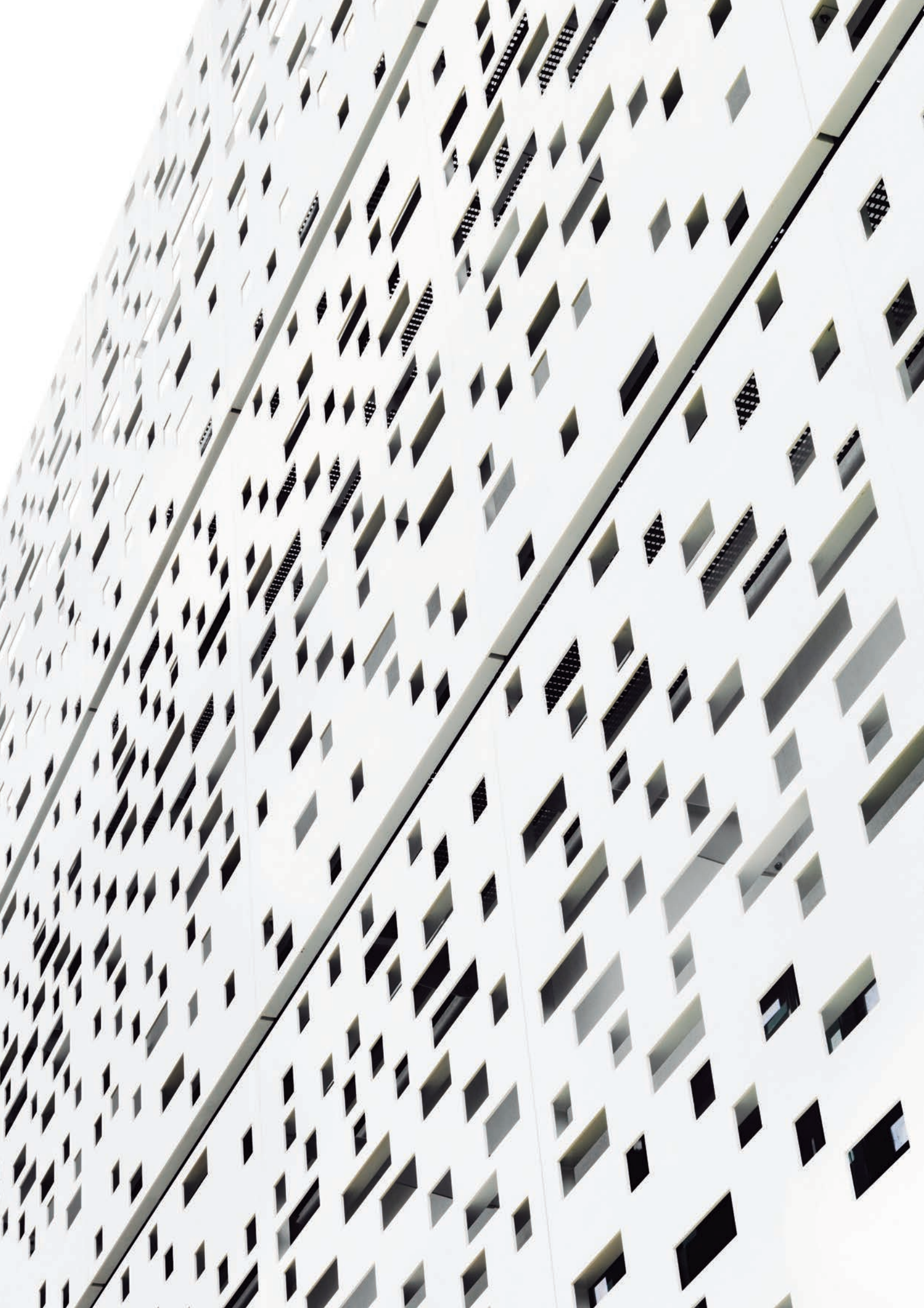
1,149.12 sqm of pixel-type engraved KRION®.
Dimensions: 3,800 x 2,800 mm.







Institut d'Optique d'Aquitaine, Talence, France.





Single-family home in Barcelona, Spain.
Architect: A-cero.

Taking advantage of one of KRION®'s main features, thermocurving, a design has been conceived which includes innovative shapes difficult to imagine with other materials.

1,200 sqm of KRION® Pure Lux Snow White sheets.

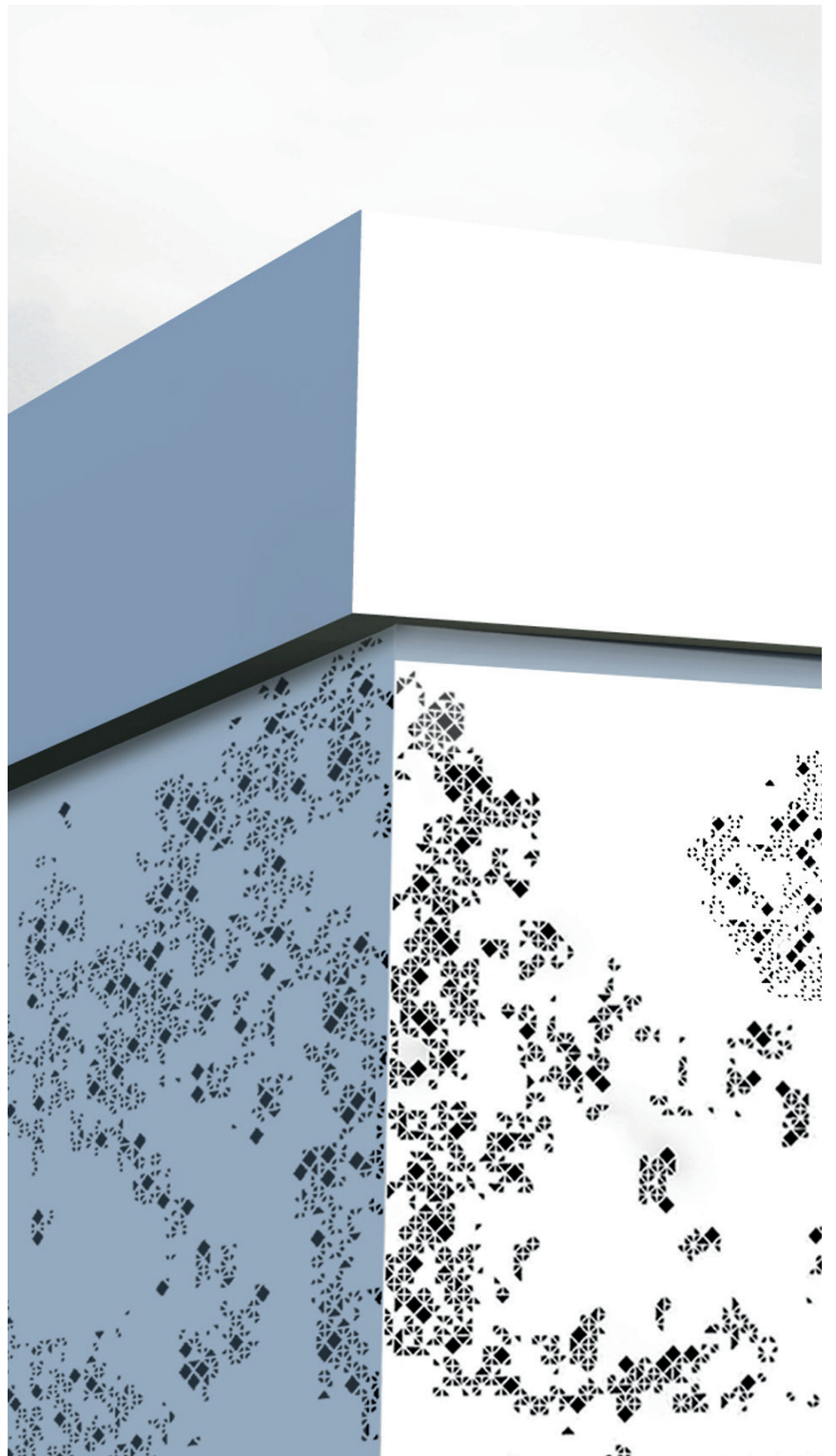




PORCELANOSA showroom in Lyon, France.

This PORCELANOSA Group showroom has been refurbished with pixel-type KRION® Pure Lux sheets, taking advantage of backlighting, another of their main features.

600 sqm of KRION® Pure Lux sheets.

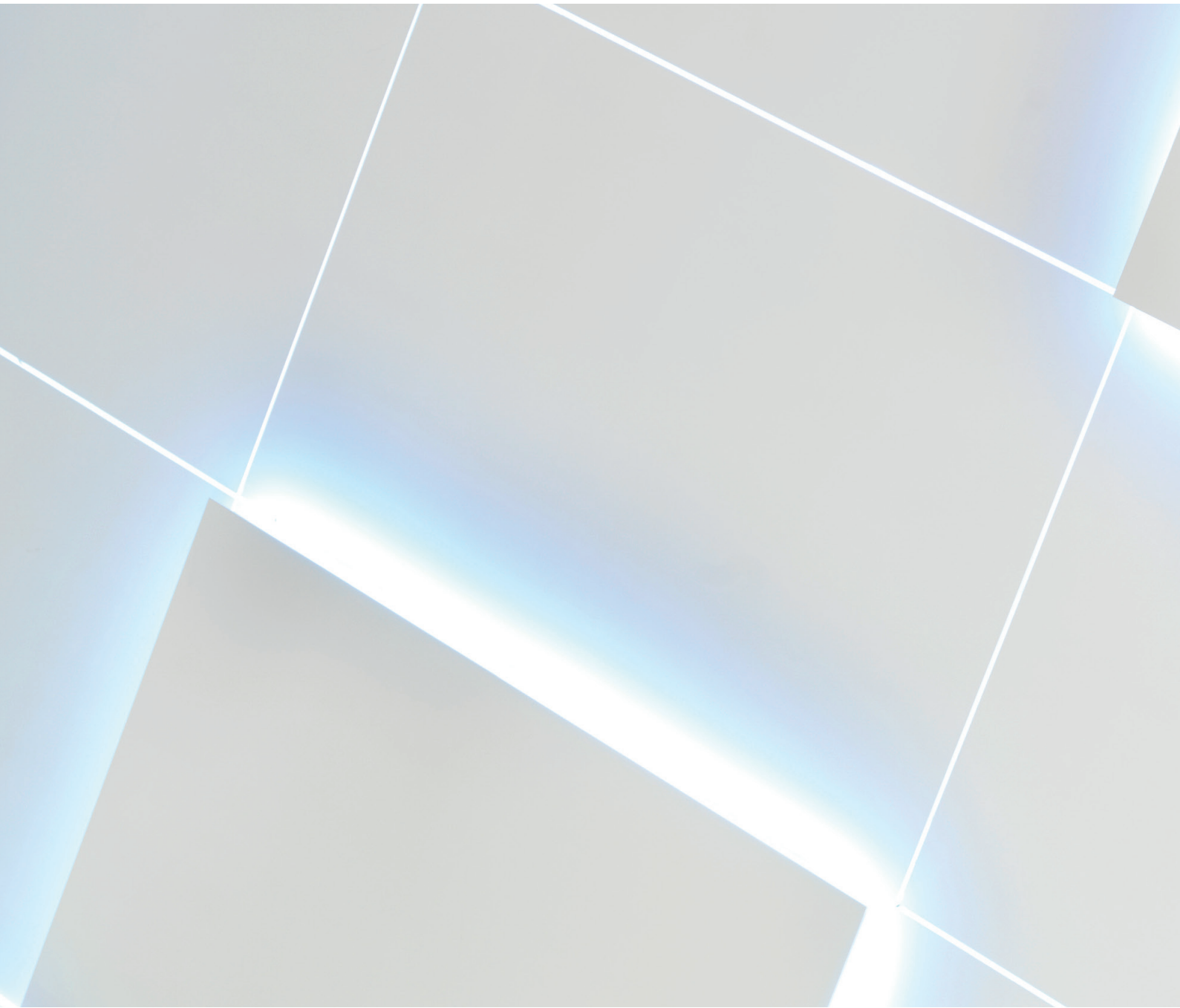


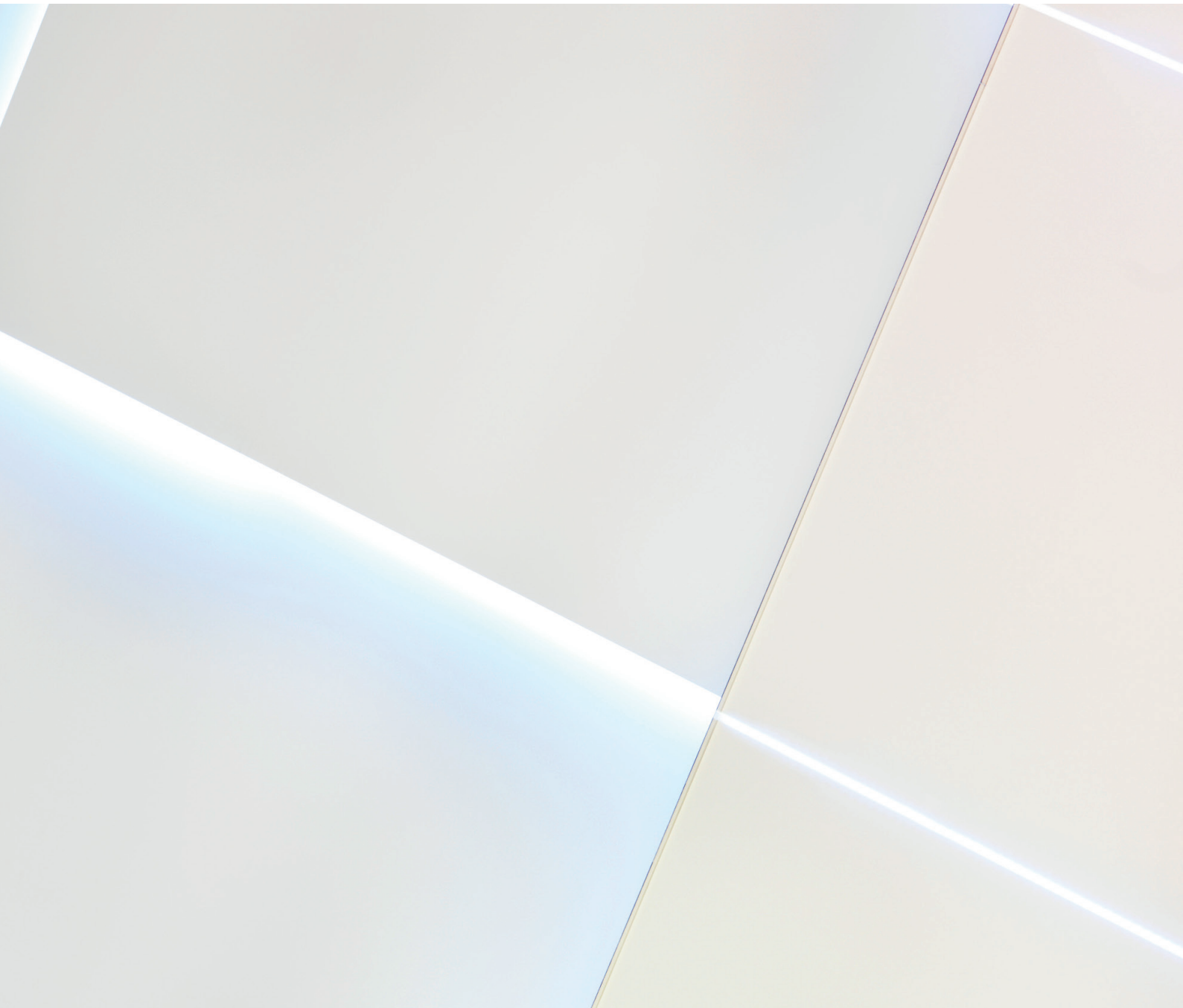


Hi Panda shop in Paris, France.

In this shop, located in the heart of Paris, KRION® was used in the exterior as well as in different interior spaces, ceilings, floors, walls, furniture, and decoration.







Features

KRION ventilated façade system combines the excellent features from SYSTEMPOOL's Solid Surface with the know-how developed by **butech** in the design and installation of this type of façades. It is accredited by the most demanding international organisms and the prestige of the PORCELANOSA brand name.

KRION ventilated façade system adapts perfectly to cladding, and allows the designer to carry out designs that would be impossible with other materials: curved, back-lit, engraved decoration, or façade design that plays with different planes. The most innovative designs are made possible thanks to the system's technical characteristics and great flexibility.

We have the guarantee of the quality of our materials, the technical characteristics of our system, and our experience.



KRICN®
ventilated façade

What is KRION®?

KRION® is a product that is solid, compact, pore-free, with uniform properties throughout its section, and which can be transformed to obtain figures and complex volumes. The KRION® surfaces employed by **butech** have high resistance to temperatures and chemical agents, are easy to clean and maintain, and offer warmth and beauty, making these solid surfaces ideal for the most demanding applications.

Unlike other materials used professionally, it can be injected, cut, machined, and glued, achieving invisible joints. This property allows designs to freely incorporate functionality and ergonomics criteria which would be otherwise difficult to obtain.

Features.

KRION® is a new generation solid surface developed by SystemPool, a company from the PORCELANOSA Group. It is a product that is warm and velvety to the touch, similar to natural stone, solid, with a uniform mass, non-porous, available both in slabs and in molded figures, and that allows for an invisible joint between the different pieces.

This product is also hygienic, unreactive, non-toxic, virtually fireproof, easy to maintain and repair, it has multiple transforming possibilities, and a high resistance to chemical agents, water vapor, or the weather.

Advantages.

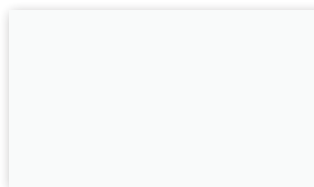
- Anti-graffiti.
- Fire-resistant.
- Resistant to cigarette burns.
- Eco-friendly.
- Antibacterial (no additives).
- Great durability.
- Resistant to high temperature.
- High degree of hardness and mechanical strength.
- Moldable.
- Large surfaces without joints.

Maintenance.

In order for the material to regain its initial state, **butech** recommends to strictly follow the manufacturer recommendations for cleaning tough stains, which are to rub the surface using a green fiber Scotch-Brite® scouring pad. This way the tough stains will disappear, so that any cleaning team will be able to carry out these maintenance tasks without needing to resort to more sophisticated items or special cleaning agents.

It can be entirely restored, which means that it can return to its original appearance. Even cigarette burns can be removed with a normal detergent and a scouring sponge.

KRION® Stone

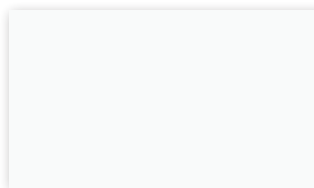


5101. Stone White

Formats (mm)

- 2,480 x 750 x 11
- 2,480 x 900 x 11
- 3,620 x 750 x 11
- 3,620 x 900 x 11

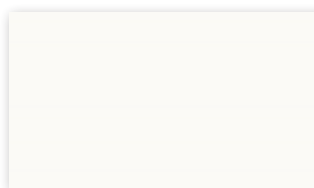
KRION® Pure Lux



1100. Snow White

Formats (mm)

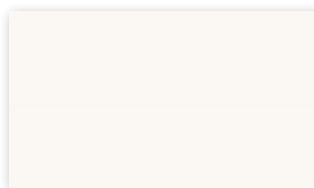
- 3,670 x 750 x 12



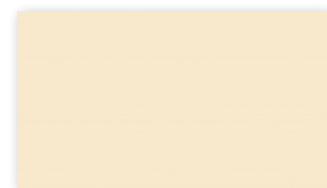
1101. Ice

Formats (mm)

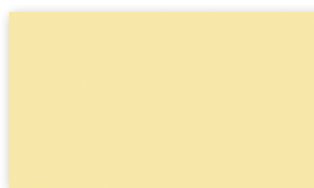
- 3,590 x 750 x 12
- 3,590 x 1,340 x 12



1103. White



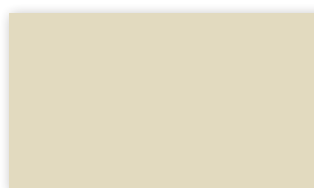
1501. Arena



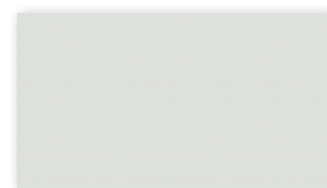
1502. Vainilla



1503. Lady



1504. Soap



1902. Light Grey

Properties

Anti-graffiti.

Graffiti can be completely removed after they have been made on the surface, and regardless of the time passed since they are made, by using a Scotch-Brite® type scouring sponge.

Fire resistance.

Fire-resistance rating is B-s1, d0 according to the UNE-EN 13501-1: 2002 standard; this classification corresponds to Flame retardant material. (It is equivalent to classification M1 according to UNE 23727:1990 standards).

Considering the Spanish Technical Building Code (CTE), the Euroclasses A1, A2, and B, correspond to the non-combustible and low combustibility product classes. They represent those construction products which are safer in terms of fire safety.

Documentation: Tests from the Technical Fire Center 1010100-01 CL.

Cigarette burn resistance.

Cigarettes are consumed 10 mm, and are then deposited on the material until 20 mm more are burned up. They are then removed, and the stain they leave is perfectly removed using a scouring sponge.

Documentation: Tests in accordance with UNE-EN 438-2: 2005 standards.

Resistance to solar radiation.

The temporal equivalence of artificial aging results is not empirical, although correlations can be established between this study and the results obtained from 10 years of natural aging in the area of Valencia.

Artificial aging tests consisting of a total of 12 extreme exposure alternate cycles, for a continuous period of 2016 hours, produce the following color material modification:

fv KRION® Pure Lux Color variation: $\Delta E = 0.55$

This value corresponds to a variation that is very slight and practically unrecognizable to the human eye.

fv KRION® Stone Color variation: $\Delta E = 5.24$

This value corresponds to a moderate color change and is only superficial, affecting 10 surface microns that can be removed using a Scotch-Brite® type scouring sponge, thus recovering the original color.

Therefore, material aging in the long run is minor, and it is possible to recover the initial appearance with basic maintenance.

Documentation: AIDIMA Report 1001022-03/04/05; QUV Chamber Tests.

Permeability to water.

The water absorption that KRION vf has under different unfavorable conditions, such as water vapor application, immersion in boiling water, or permanent placement in water without aeration, stays in peak values of 0.15 %, desorbing all of the water after the immersion.

This extremely low absorption level guarantees the non-existence of problems related with material hydrolysis.

Documentation: Tests in accordance with UNE-EN ISO 62, UNE-EN 438-2, NEMA LD 3-2000; AIDIMA Report 1001022-03/04/05.

Resistance to thermal shock.

It passes the shock tests, which consist of 1,000 cycles of 30 seconds each, alternating water at 90 °C with water at 15 °C.

This property reduces the chances of cracking from sudden temperature changes.

Documentation: AIMPLAS Tests in accordance with ISO 19712.

Resistant to both microbial and fungal attack and proliferation.

KRION vf complies with the most demanding hygienic-sanitary regulations, and is suitable for high requirement applications such as clean rooms or operating rooms.

This property, as well as its non-corrosiveness, ensures the material's high durability.

Documentation: Tests in accordance with ASTM G-21 and UNE EN ISO 846 standards.

Backlighting.

KRION® Pure Lux allows the creation of back-lit atmospheres. Spectacular lighting effects can be achieved by combining different material thicknesses.





KRION vf Façade system

PORCELANOSA Group is at the forefront in terms of production, R&D, and technical innovation, in the different fields covered by the various companies that make up the group. In these fields, **butech** is the company that is in charge of the development, management, and implementation of the different building systems that may affect more avant-garde projects, such as the Ceramic Ventilated Façade, the KRION® Façade, the Attached Façade, the Raised Access Floor, the Drop Ceilings, and the Geothermal Energy.

Among these technical products, **butech** has developed an innovative system for Solid Surface installation in ventilated façades. This system, known as **KRION vf**, allows us to take advantage of all the technical and aesthetic qualities of KRION®, combining them with the advantages offered by ventilated façades.

The best materials, always high quality aluminum and stainless steel, are used for the construction of the ventilated façade system. These materials can adjust to the different shapes that KRION® can adopt in the façade, broadening the designer's creative freedom.

Additionally, the **KRION vf** system has been tested jointly (KRION®+profiles) so that its suitability to the different conditions that we find during construction are tested, obtaining the most demanding certificates from agencies such as the French CSTB.

The Group offers high technology products, with high-end technical and aesthetic features that adapt to the needs of designers and architects, and a team of technicians capable of developing these projects in the most economically viable and safe way. **butech's** professional team treasures the knowledge acquired across the many projects undertaken throughout its development, integrating high degrees of specialization which enhance every part of the design, development, and implementation process.

All this project technical development can obviously include the documents that the customer might need to certify the whole constructive system, the technical specifications of the materials used, the specific construction details for the project, such as calculations of wind suction, anchor checking, determination of the stress that the façade structure transmits, calculation of the heat transfer coefficient of the enclosure thickness, determination of the façade weight, sizing of the façade for a proper system expansion, etc.

Once all the project technical development has been carried out, one of the main factors for a correct project completion is obviously a correct implementation, and **butech** currently has installer teams that specialize in the installation of any type of project, no matter how complex it is.

Currently the **KRION vf** system has several certifications and tests available that guarantee both the quality of the work carried out, and the construction system and materials used.

butech Technical Department.

The creation of unique façades requires multi-disciplinary contributions from qualified professionals. Butech stands out for the development specialization of any type of project, both conventional and non-conventional. It offers the following services:

Phase 1. Preparation of estimate.

Initial layout study, as long as the information and necessary plans are provided. A design is proposed, and based on this design a bill of quantities and rough cost estimate are made in accordance with technical, aesthetic, and economic criteria that make it viable.

Delivery of system standard details.

Adjustments and modifications based on indications made by the customer, which had not previously been made. Drafting of a more adjusted cost estimate, and the chance to provide singular point technical details.

Phase 2. Development of the project.

This phase only starts once the project is accepted.

Technical visit to the customer to determine all the project details, expansion joints, window finishings, and singular point solutions.

Based on all the conclusions that come out of the technical visit, and after a real on-site measurement, the final construction estimate is prepared.

Drafting of the various calculation documents that the client might need and butech can provide.

Development of specific project construction details.

Phase 3. Implementation of the project.

Once the final construction estimate is accepted and the contract is accepted.

Initial construction layout.

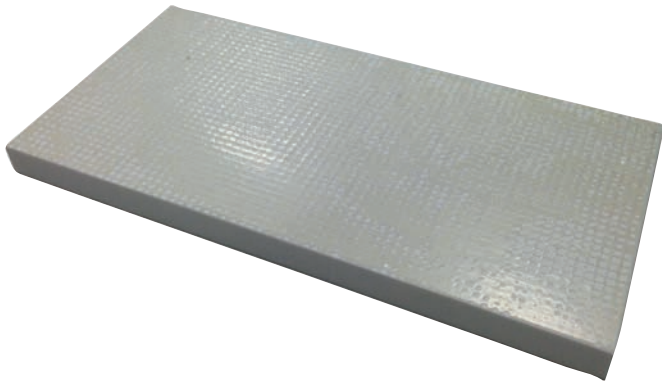
Placement of system structural elements.

Installation of KRION® slabs.

Façade sanding and cleaning.

All the necessary visits will be made during the whole construction execution in order to ensure the correct implementation that the project might require, depending on its complexity.

Benefits of KRION vf



Safety net.

KRION® façades are supplied with an elastomeric safety net attached with polyester resin. The safety net offers an extra guarantee in terms of safety, protecting from a possible detachment caused by a large impact.



B-s1-d0 Fire resistance.

KRION® is a material that has an excellent performance against fire, so that its outdoor use is totally recommended. The results have been obtained in accredited external laboratories, and show that we get the best certification in comparison with the other Solid Surface products existing in the market.



Aging of the material.

As in the previous section, we have tests from accredited external laboratories certifying that the material barely ages over time due to the effect of ultraviolet rays.



Turn Key.

The façades designed with such materials tend to be a value-added façades, with designs that require full project monitoring from the first to the last piece.

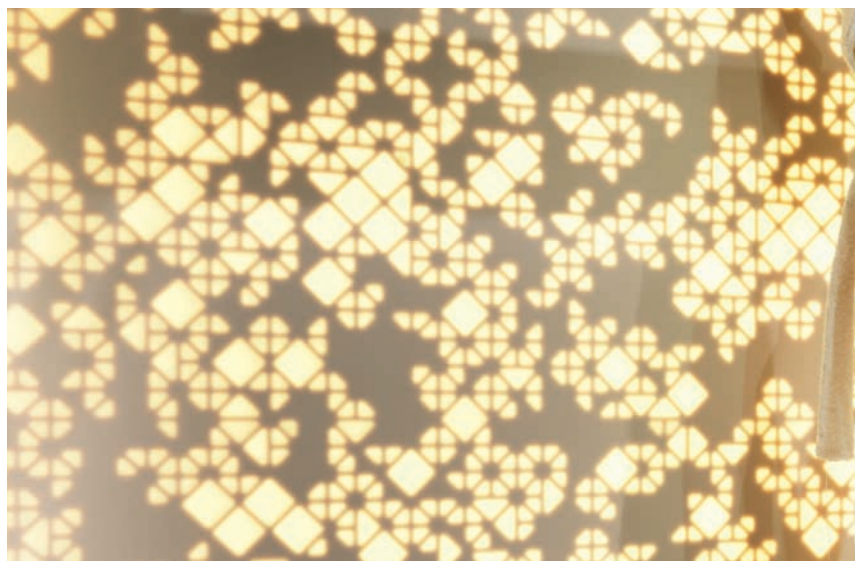
At present, PORCELANOSA Group is able to offer this full monitoring during all project stages: design, dimensioning and calculation of the structure, contribution of necessary reports and calculations, supply of necessary materials, and installation, so that it differentiates itself from other companies that may offer this same product.



Guarantees.

PORCELANOSA Group offers the customer a unique Guarantee document of the KRION vf product, both concerning materials, offering coverage of up to 10 years, and in everything that has to do with the installation.

Benefits of KRION vf



Backlighting.

Besides being able to include light as a façade decorative supplement, the KRION® Pure Lux product family offers the possibility of backlighting a solid surface thanks to the translucent characteristics of the material itself.

Within this type of lighting, we could differentiate two possible types offered by the product range:

Full backlighting of the slabs.

KRION® Pure Lux Light slabs can be completely illuminated from behind thanks to the material's translucent properties, without having to do any recesses. The only determining factor for this type of decorative solution is finding the perfect constructive solution for developing an anchoring system that does not interfere with the lighting areas.

Partial backlighting of the slabs.

KRION® Pure Lux slabs can be partially lit from behind, recessing the material through numerical control. This machining allows for the light to be only visible in these points. This solution lets us to cover an important range of decorative solutions: mosaics, corporate logos, designs using stripes...



Thermal bending.

Another major advantage offered by the use of KRION® Pure Lux outdoors is being able to design curved areas with no joints; these designs could not be made at present with other types of materials currently available in the market.



Machining.

The possibility of using numerically controlled machining, together with the possibility of joining the pieces afterwards, makes such materials suitable for developing any conceivable design that combines formats, mosaics, pixelations, irregular pieces, etc...

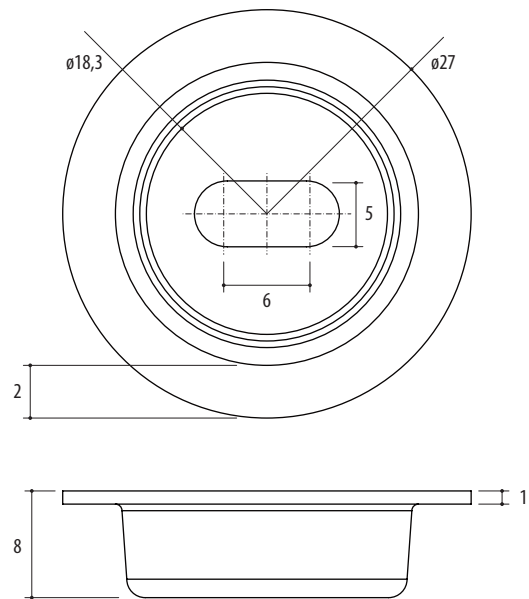


Technical features

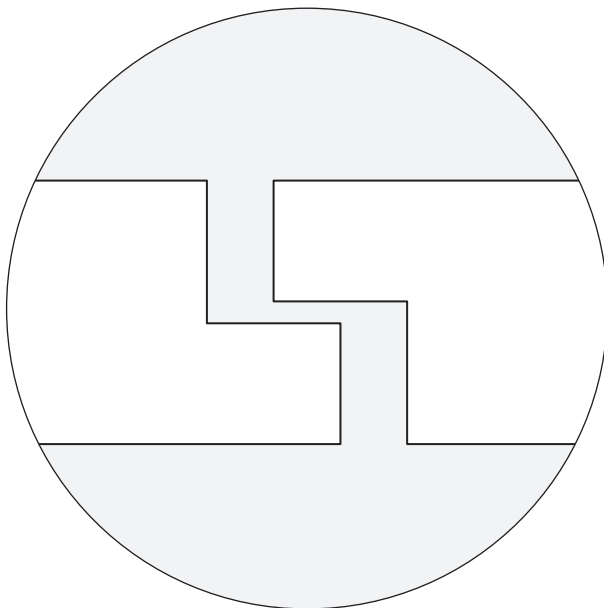
Property	Method	Units	Results KRION® Stone (11 mm)	Results KRION® Lux (12 mm)
Density	DIN ISO 1183	g/cm ³	1.787 - 1.800	1.710 - 1.726
Flexural modulus	DIN EN ISO 178	MPa	9,786 - 9,894	9,260 - 9,834
Flexural strength	DIN EN ISO 178	MPa	52.3 - 54.7	68.1 - 73.4
Elongation	DIN EN ISO 178	%	0.55 - 0.59	1.08 - 1.12
Compression resistance	EN ISO 604	MPa	111 - 115	97 - 101.2
Impact resistance (continuous load)	DIN ISO 4586 T11	N	> 25	>25
Impact resistance (falling ball)	ISO 19712	Ball 324 g/2 m	Does NOT break (>130 cm)	Does NOT break (>190 cm)
Surface hardness (Mohs scale)	DIN EN 101		3	3
Abrasion resistance (use)	DIN ISO 4586 T6	% mass / 100 rev.	0.148	0.11
		mm ³ / 100 rev.	82	64
Immersion in boiling water	DIN ISO 4586 T7	Weight %	0.1 - 0.3	0 - 0.25
Resistance to bacteria and fungi	DIN EN ISO 846		Do NOT thrive	Do NOT thrive
Dimensional stability 20 °C	DIN ISO 4586 T10	% change in length	0.01 (90% HR and 23% HR)	0.02 (90% HR) and 0.08 (23% HR)
Resistance to dry heat 180 °C	ISO 19712-2	4	Slight change brightness/color	Slight change brightness/color
Translucency (xenon arc)	DIN ISO 4586 T16	"Blue wool"	> 6	> 6
Non-slip properties	UNE-ENV 12633:2003 (USRV values)	Less than 120 sanding	CLASS 2	CLASS 1
40-Sanded finish anti-slip properties	UNE ENV 12633:2003	Rd (roughness)	Rd = 58 CLASS 3	Rd = 40 CLASS 2
80-Sanded finish anti-slip properties	UNE ENV 12633:2003	Rd (roughness)	Rd = 52 CLASS 3	Rd = 38 CLASS 2
100-Sanded finish anti-slip properties	UNE ENV 12633:2003	Rd (roughness)	Rd = 45 CLASS 2	Rd = 36 CLASS 2
120-Sanded finish anti-slip properties	UNE ENV 12633:2003	Rd (roughness)	Rd = 28 CLASS 1	Rd = 22 CLASS 1
320-Sanded finish anti-slip properties	UNE ENV 12633:2003	Rd (roughness)	Rd = 20 CLASS 1	Rd = 14 CLASS 0
Transverse resistivity	UNE 21-303:1983	Ωm	> 5.1 x 10 ¹⁰	>5.1 x 10 ¹⁰
Surface resistivity	UNE 21-303:1983	Ω	579.1 x 10 ⁻⁹	>1 x 10 ⁻⁹
Toxicity of combustion gases	NF F 16-101		Class F0	Class F0
Fire classification	EN 13501-1:2003		Euroclass B, s1, d0	Euroclass B, s1, d0
Thermal conductivity	UNE 1267 (2002)	W / m ²	q = 113.1	q = 113.1
	UNE 1267 (2002)	m ² . K / W	R < 0.05	R = 0.05
	UNE 1267 (2002)	W / m . K	λ approx. 0.428	λ = 0.396
Resistance to thermal shock (90 - 20 °C)	ISO 19712-2 (Sheet)	250 Cycles	Satisfactory	Satisfactory
Resistance to thermal shock (65 - 10 °C)	ISO 19712-3 (Shape)	500 Cycles	Satisfactory	Satisfactory

KRION® Ventilated façade details

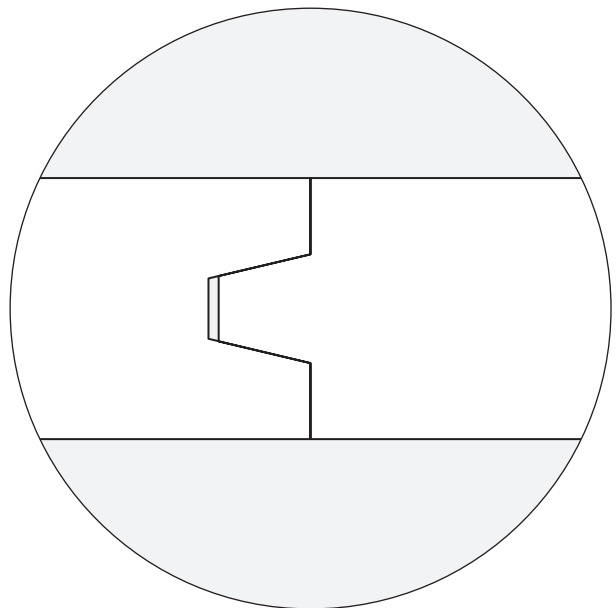
KRION® Cap



Expansion recessing

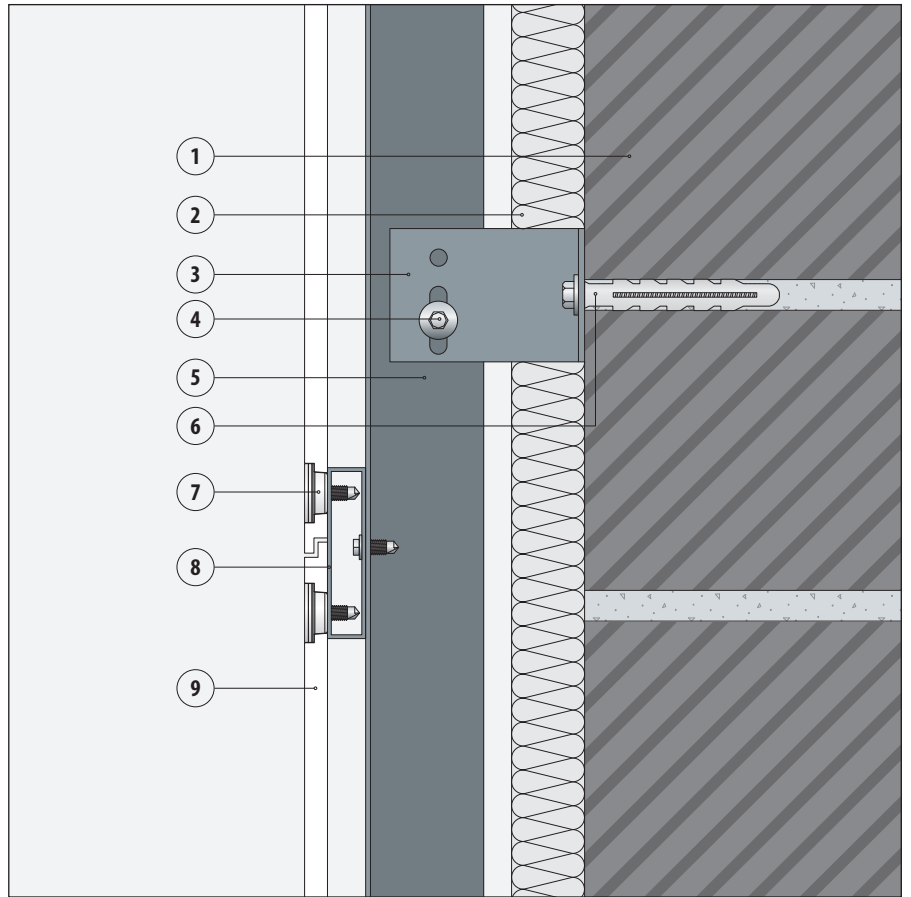


Tongue and Groove for sheet joining



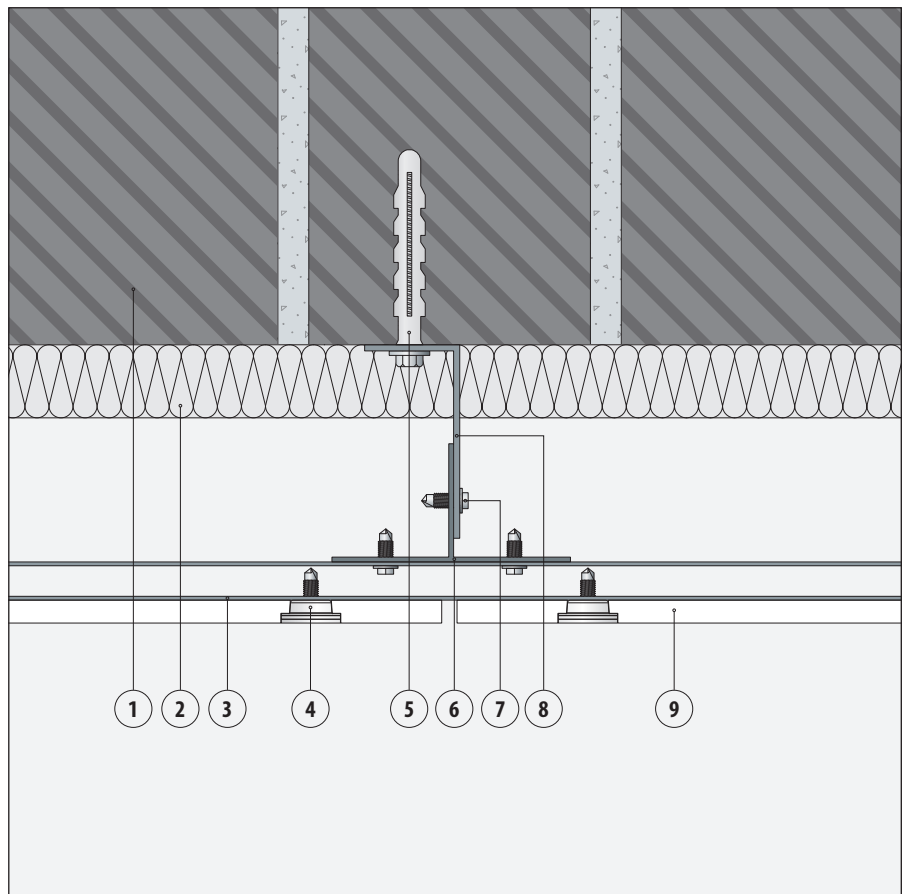
Vertical cross-section

1. Enclosure
2. Thermal / acoustic insulation
3. "L" shaped Separator
4. Union "L" / "T" screw
5. "T" Profile
6. Union anchorage "L" shaped separator / enclosure
7. KRION® Cap
8. Tubular profile
9. KRION®



Horizontal section

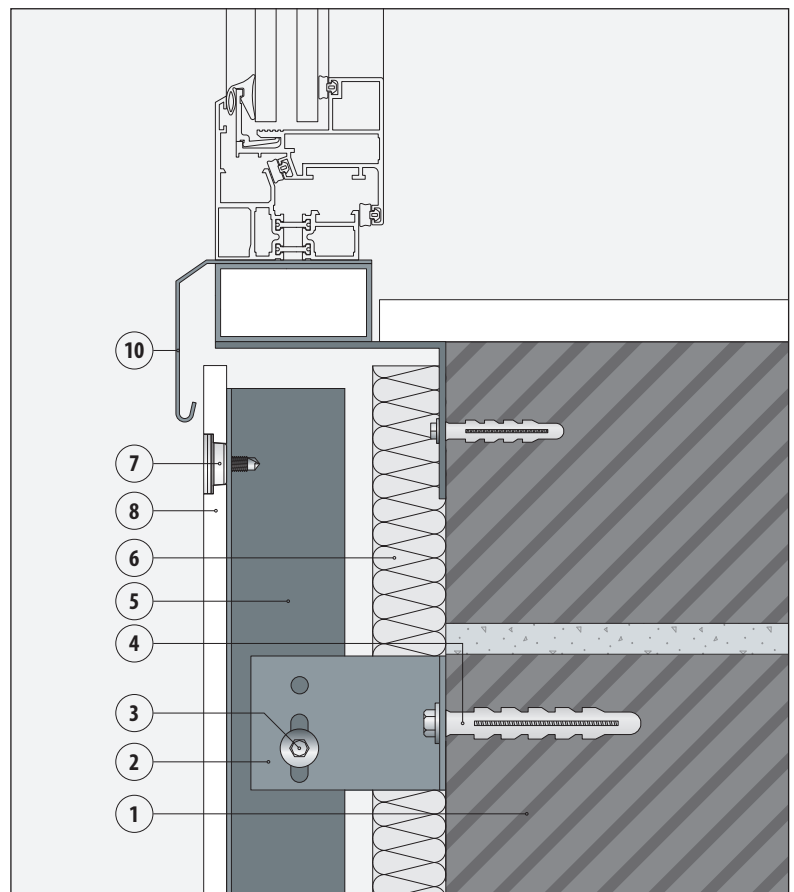
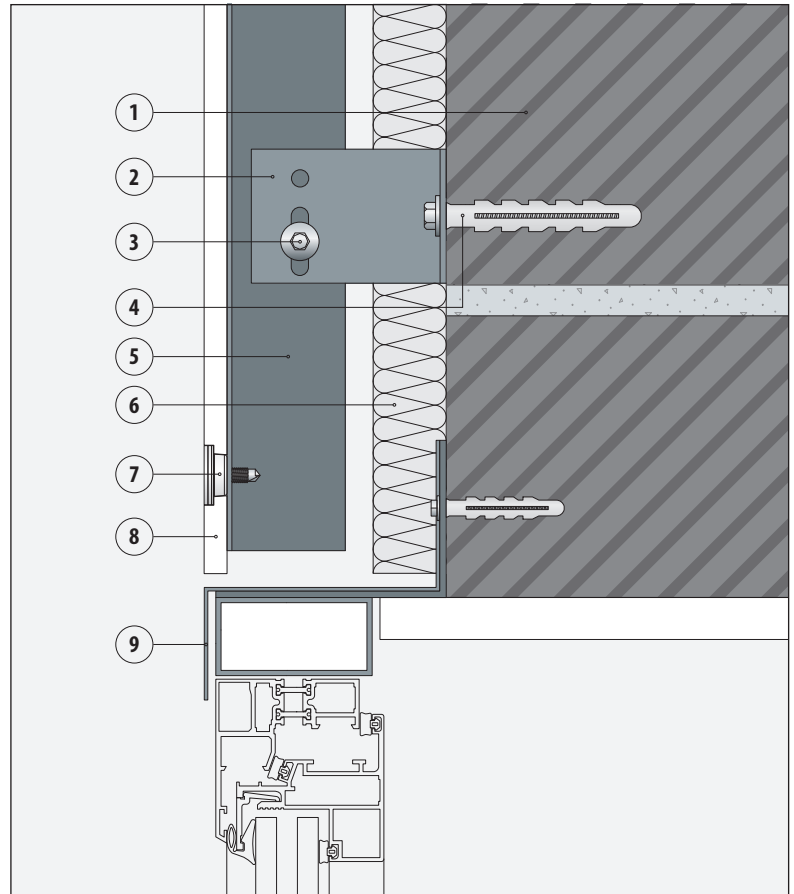
1. Enclosure
2. Thermal / acoustic insulation
3. Tubular profile
4. KRION® Cap
5. Union anchorage "L" shaped separator / enclosure
6. "T" Profile
7. Union "L" / "T" screw
8. "L" shaped Separator
9. KRION®



KRION® Ventilated façade details

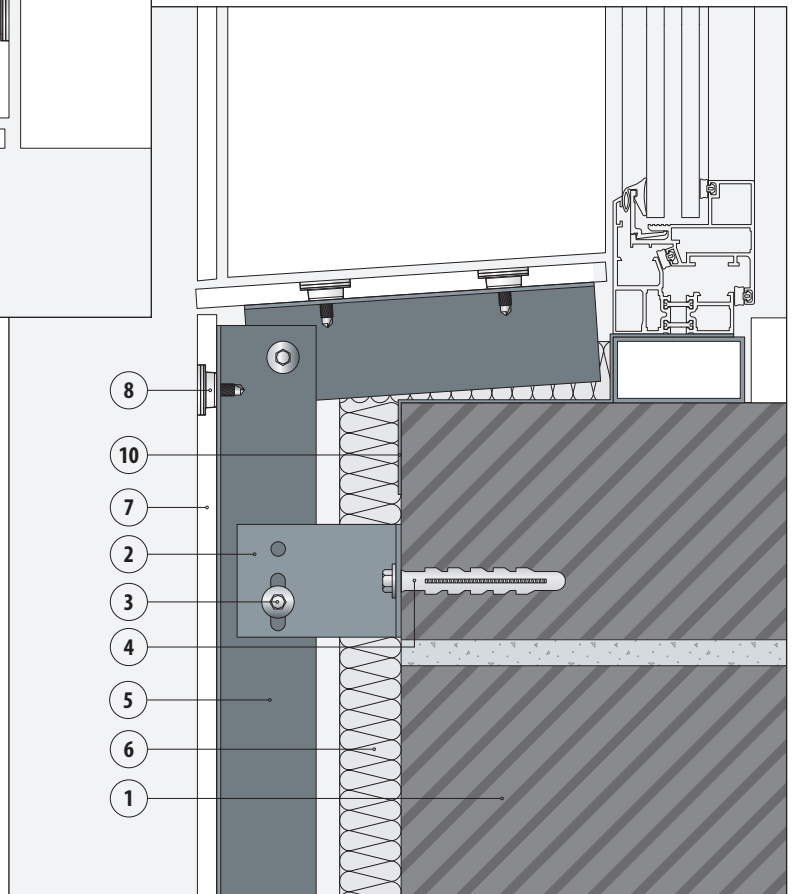
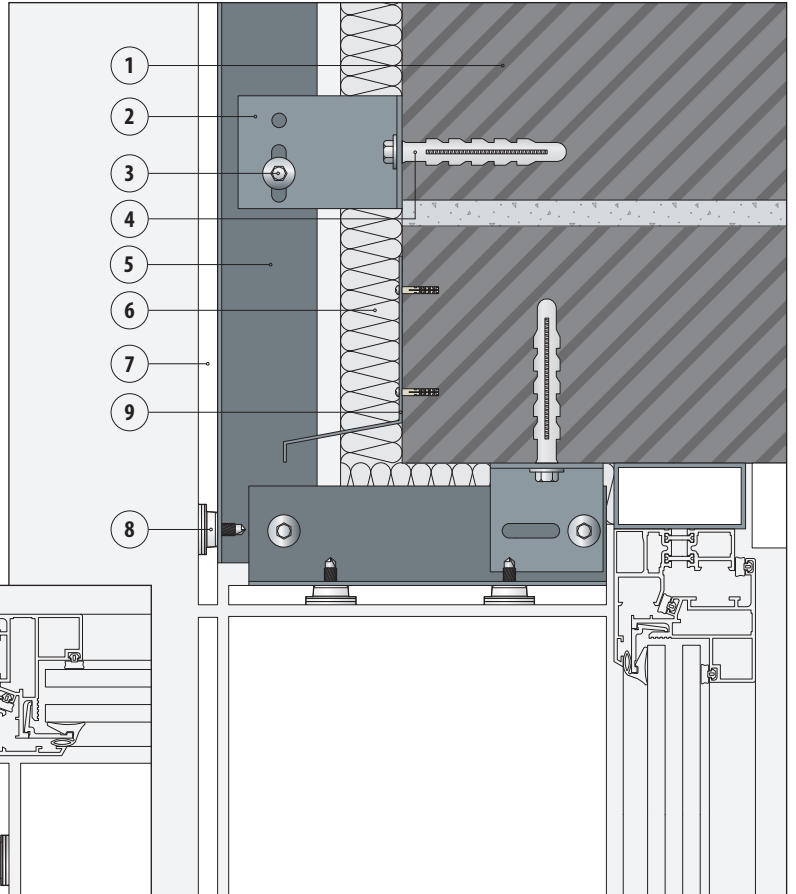
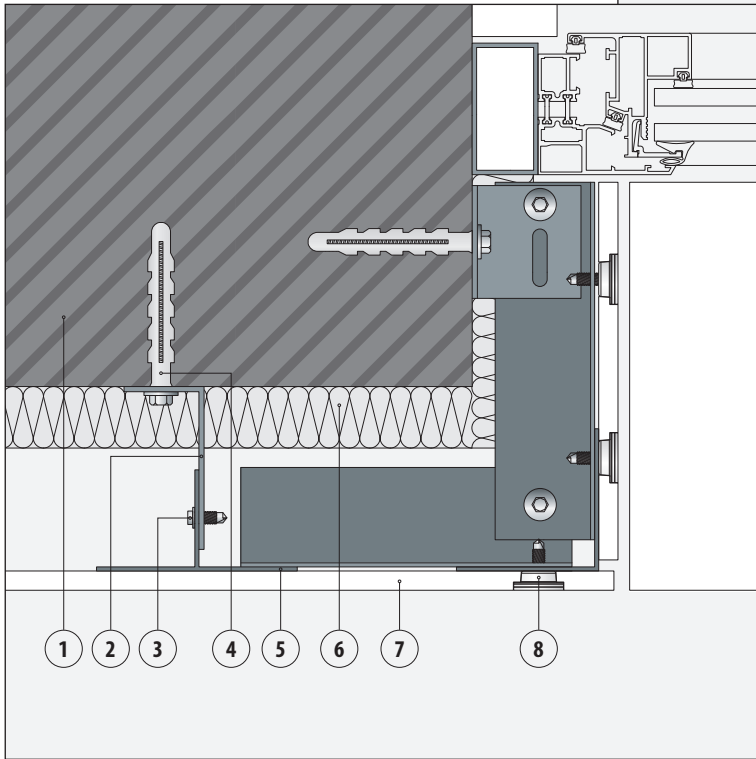
Window section with outer shafts

1. Enclosure
2. "L" shaped Separator
3. Union "L"/"T" screw
4. Union anchorage "L" shaped separator / enclosure
5. "T" Profile
6. Thermal / acoustic insulation
7. KRION® Cap
8. KRION®
9. Folded stainless steel sheet
10. Window sills



Dressings with KRION®. Vertical and horizontal section

1. Enclosure
2. "L" shaped Separator
3. Union "L" / "T" screw
4. Union anchorage "L" shaped separator / enclosure
5. "T" Profile
6. Thermal / acoustic insulation
7. KRION®
8. KRION® Cap
9. Window sills
10. Folded stainless steel sheet



KRION® vf Façade System certificates and tests



Resistance tests to wind effects:

report of **CSTB** tests no. CLC 12-26037368 of 07/03/0212.

Resistance tests to wind effects after fatigue:

report of **CSTB** tests no. CLC 12-26037925 of 14/03/0212.

Impact resistance tests:

report of **CSTB** tests no. CLC 12-26037369 of 19/09/2012.

Insert pull-out resistance tests, flexural and tensile strength tests on the welded joints, in the initial state and after aging and heat + humidity:

report of **CSTB** tests no. CLC 12-26037398/26037404 of 03/08/2012.

Insert pull-out resistance tests, flexural and tensile strength tests on the welded joints, after ice / thaw cycles:

report of **CSTB** tests no. CLC 12-26037400/26037404 of 03/08/2012.

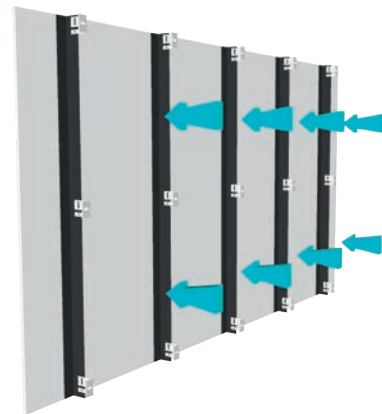
Reaction to fire tests:

PV number 1010100-01CL and 1010122-01CL, carried out at the Institute AIDICO Technical Fire Center, in Spain.

Wind suction test.

According to the tests made by an official institute for obtaining the ATEX (Experimental Technical Attestation), the breakage limit value of wind suction equals 601.02 kg/m², always breaking by punching at the cap.

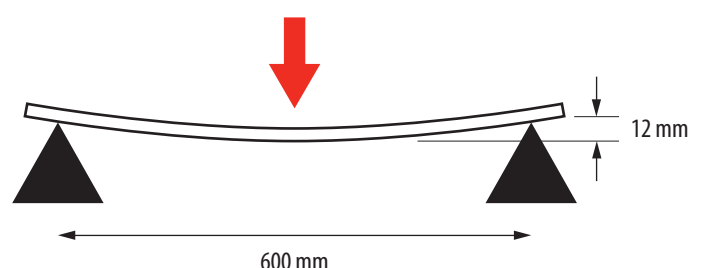
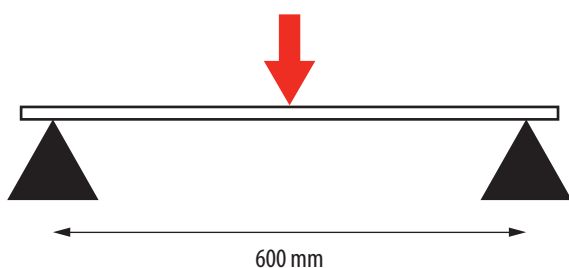
Uniform values have been obtained for the different samples taken. It is therefore a very high value, which allows us to install this façade system with KRION® cladding in areas that have a high wind exposure.



Simple flexure test.

According to the flexure tests carried out at AIMPLAS (Technological Institute of Plastics) KRION®'s elastic modulus is 8,690 Mpa, and the flexural strength is 53.5 Mpa.

Substantial variations are not obtained in results when testing aged samples.



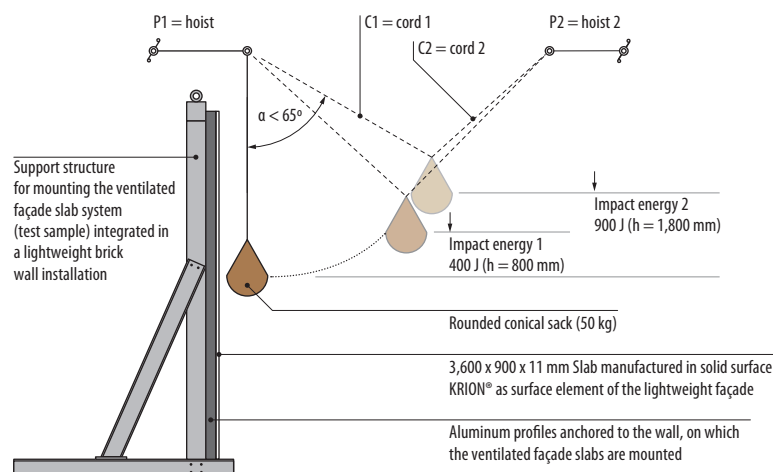
Impact test.

Summary of report findings on test number IE100045, obtained from the four tested arrangements of the Solid Surface lightweight façade slab system, for the two types of tests, rigid and soft body:

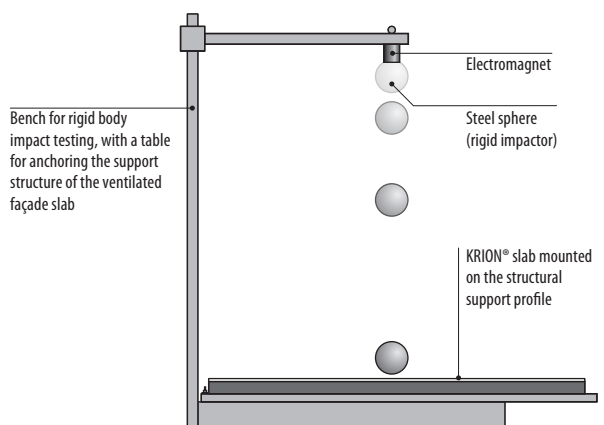
Types of test	Arrangement and description	Evaluation parameters of the test			
		Collapse	Penetration	Projection	Degradation
Soft body impact	56013-2-1. On center of 900 x 900 x 11 mm slab. ($E_{kinetic} = 900 \text{ J} \cdot h = 1.8 \text{ m}$)	Ok	Ok	Ok	(1)
	56013-2-2a. Test on 900 x 900 x 11 mm slab, with 4 fittings. ($E_{kinetic} = 900 \text{ J} \cdot h = 1.8 \text{ m}$)	Ok	Ok	Ok	(1)
Rigid body impact	56013-3-2. On center of 900 x 900 x 11 mm slab. ($E_{kinetic} = 6 \text{ J} \cdot h = 1.2 \text{ m} \cdot m = 0.5 \text{ kg}$)	(1)	Ok	(1)	Ok
	56013-4-2. On center of 900 x 900 x 11 mm slab. ($E_{kinetic} = 10 \text{ J} \cdot h = 1.0 \text{ m} \cdot m = 1 \text{ kg}$)	Ok	Ok	Ok	(1)

(1) In this case, for this test arrangement, this evaluation parameter does not apply.

Soft body impact test.



Rigid body impact test.







Installation and assembly

SYSTEMPOOL, in collaboration with **butech's** Technical Department, has developed the necessary tools, materials, and techniques for implementing KRION® both in interior decoration and building façades. All PORCELANOSA Group's experience in the installation of ventilated ceramic façades is applied to KRION®, thus achieving the most innovative designs.

The experience of PORCELANOSA Group's ventilated façade mounting teams, together with the ability of our technicians, make KRION®'s ventilated façade a new reality which serves contemporary architecture.

Cutting and pasting of KRION®



Chemical welding.

In first place, we must prepare the chemical welding kit. Once prepared, we shall join the slabs in a seam, so that the welding kit paste joins the two pieces. After joining the pieces, let dry.



Gluing.

Whenever we want to join edges, these should be straight or at 90° angles. Before applying the adhesive, the area should be cleaned with a cloth and methylated spirit; this way we will leave the area 100% clean. In order to achieve invisible joints, the use of KRION® adhesive is essential.



Linear cutting.

If we want to make linear cuts, we shall use a circular saw with hardened metal or diamond teeth.



Curved cut.

If we want to make linear cuts, we shall use a circular saw with hardened metal or diamond teeth.

KRION® polishing and finishing



Polishing.

A random orbital sander must be used, with movements from top to bottom or from left to right.

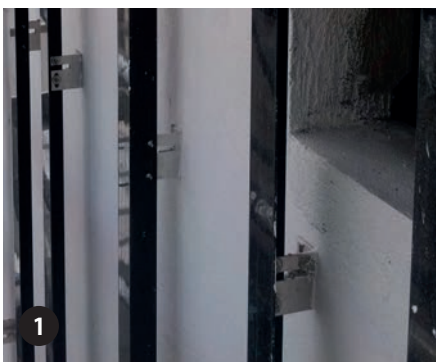


Finishing.

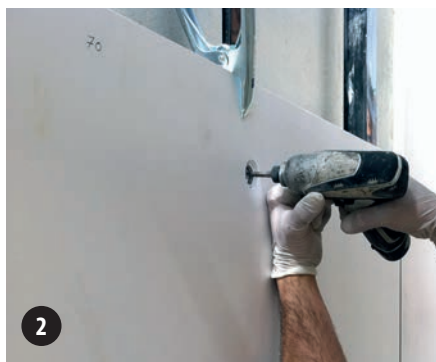
The finishing, whether it is glossy or matt, can be done at the end of the work with sandpaper. This finishing can be chosen by the customer.

You can request more information at sistemas@butech.es

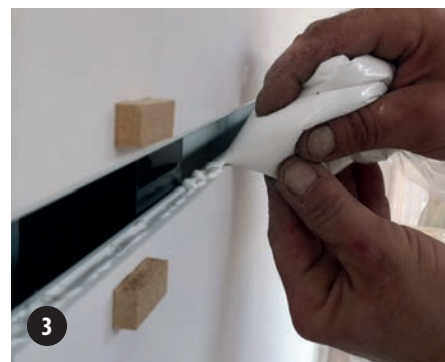
Assembly and installation of KRION® vf



Place the **butech** aluminum profiles.



Once the **butech** aluminium profiles are placed, perfectly aligned and plumbed, the slabs are then screwed on. The slabs have inserts that house inside them the KRION® aluminum clamps, which guarantee a correct fastening.



After cleaning and drying the surface on which we are going to perform the chemical welding with the next slab, a continuous seam of KRION® liquid adhesive is applied inside the female part of the slab.

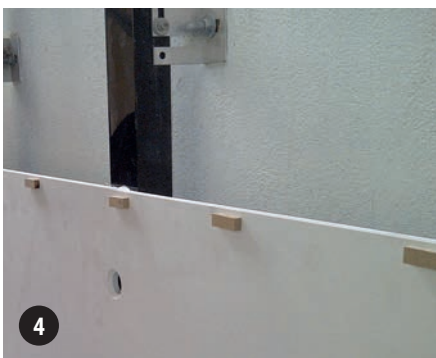
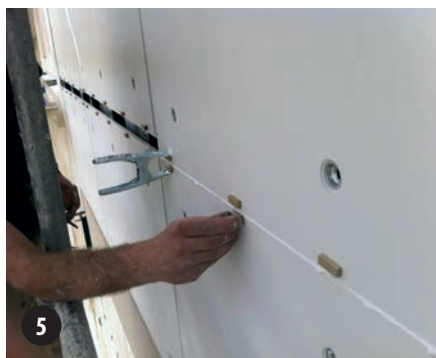


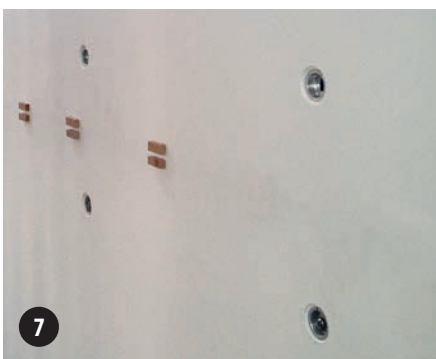
Image of prepared KRION® slabs with adhesive.



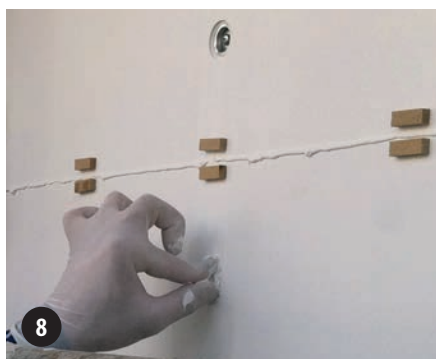
Next, the male part of the next slab is inserted into the female part, so that the KRION® adhesive overflows.



The fastening clips are installed so they exert pressure and ensure a perfect joining of the two slabs.

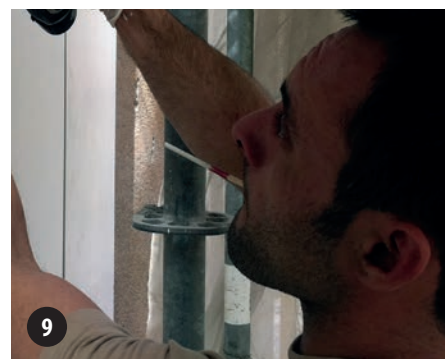


After this, remove the clips and wood wedges.



Next, we glue the insert plugs with KRION® adhesive, so that it overflows.

In order to glue these plugs, they must be clean and dry.



After 24 hours, the surface sanding may be carried out, eliminating all the rugosities, stains, and excess adhesive, obtaining the final finishing of the KRION® slabs.





New materials new solutions

KRION® offers great creative freedom, allowing the designer to generate a great variety of spaces, attractive volumes, different types of shapes, etc.

Its possibilities are almost unlimited thanks to its features, that allow among other things: thermal bending of pieces, backlighting, large formats by welding slabs together, injection of pieces with different shapes or imprinted reliefs, the possibility of obtaining it in various colors...









Shops in Spain

Álava	Vitoria-Gasteiz	JORGE FERNÁNDEZ	Polígono de Jundiz. Paduleta, 53	+34 945 244 250	+34 945 229 321		
	Vitoria-Gasteiz	JORGE FERNÁNDEZ	Los Herrán, 30	+34 945 254 755	+34 945 259 668		
Albacete	Albacete	PORCELANOSA	Avenida Gregorio Arcos, 32 (Polígono Campollano)	+34 967 243 658	+34 967 193 465		
	Villarrobledo	OLIVARES MATERIALES DE CONSTRUCCIÓN	Avenida Reyes Católicos, 168	+34 967 138 105	+34 967 138 023		
Alicante	Alicante	PORCELANOSA	Polígono Las Atalayas, Parcela VI. Calle del Franco	+34 965 109 561	+34 965 106 965		
	Denia	LLACER INSTALACIONES Y SERVICIOS	Pedreguer 10-12	+34 965 781 635	+34 965 789 821		
	Elche	PORCELANOSA	Avenida Alicante,105	+34 966 610 676	+34 966 610 700		
	Jávea	AZULEJOS JAVEA	Liverpool, 4	+34 965 791 036			
	San Juan	PORCELANOSA	Carretera Valencia, km 88	+34 965 656 200	+34 965 655 644		
Almería	Almería	PORCELANOSA	Avenida Mediterráneo, 2º tramo	+34 950 143 567	+34 950 142 067		
	El Ejido	PORCELANOSA	Carretera Nacional 340, km 411	+34 950 483 285	+34 950 486 500		
	Vicar	PORCELANOSA	Parque Comercial Viapark, parcela 1	+34 950 325 575	+34 950 338 651		
Asturias	Gijón	PORCELANORTE S.L.	Menéndez Pelayo 30	+34 984 396 462			
	Oviedo	PORCELANOSA	Polígono Espíritu Santo. Calle Dinamarca, s/n	+34 985 791 526	+34 985 985 963		
Ávila	Ávila	PAVIMARSA	Pol. Ind. Vicolozano - Parcela 2	+34 920 259 820	+34 920 259 821		
Badajoz	Azuaga	AZUAGA-CORVILLO VERA	Pol. Ind. Parcela 5	+34 924 892 579	+34 924 890 688		
	Badajoz	GALLERY CERAMIC	Carretera N-V Madrid-Lisboa, km 399	+34 924 229 144	+34 924 229 143		
	Llerena	LLERENA-CERAMIC	Calle Convento Santa Isabel, 2 Local Comercial	+34 924 108 318			
Baleares	Mérida	PORCELANOSA	Avenida Reina Sofía, 8	+34 924 330 218	+34 924 330 315		
	Andraitx - Mallorca	PORCELANOSA	Calle Habana,2	+34 971 136 476			
	Cala d'Or - Mallorca	MACODOR	Carretera Calonge - Cala d'Or, km 1,5	+34 971 658 210			
	Inca - Mallorca	PORCELANOSA	Pagesos, s/n. Polígono Inca	+34 971 507 650	+34 971 507 656		
	Llucmajor - Mallorca	MAGATZEM SES FORQUES	Calle Doctor Fleming, 10	+34 971 662 114	+34 971 662 816		
	Manacor - Mallorca	PORCELANOSA	Carrer Via Palma, 102	+34 971 554 502			
	Palma de Mallorca - Mallorca	PORCELANOSA	Gran Via Asima, 21. Polígono Son Castelló	+34 971 430 667	+34 971 297 094		
	Sant Antoni de Portmany - Ibiza	PORCELANOSA	Polígono Monte Cristo, s/n. Carretera Ibiza	+34 971 317 292	+34 971 317 293		
	Soller - Mallorca	PORCELANOSA	Carrer del Mar, 193	+34 971 630 219			
	Barcelona	Barcelona	AZULEJOS SAN ANDRÉS	Plaça Mossen Clapes, 2-3	+34 933 455 102	+34 933 461 015	
Cabrera de Mar		ORMAT	Carretera de Vilassar-Argentona km. 1	+34 937 591 139	+34 937 502 076		
Calaf		PLANELL	Carretera Manresa km 31	+34 938 698 750	+34 938 600 181		
Canovelles		COMERCIAL MAESTRO CANET	Poligon Can Castells, nau 7-8	+34 938 466 568	+34 938 409 216		
Casseres		MATERIALS CASSERRES	San Rafael	+34 938 213 770			
Cornellà		LOFT CUINA	Carrer La Miranda, 6-8	+34 934 743 793	+34 934 741 305		
Cubelles		MA-CO	Carrer Penedes-Carrer La Selva Pol.Ind Les Salines	+34 938 954 141	+34 938 954 142		
Gironella		ANTONI PONT	Carrer Farguelli, 31	+34 938 228 088	+34 938 250 786		
L'Hospitalet de Llobregat		PORCELANOSA	Ciències, 65. Gran Via l'Hospitalet	+34 932 642 500	+34 932 007 036		
Manresa		PRAT MATERIALS I MAQUINARIA	Mossen Jacint Verdaguer, 26	+34 938 741 903	+34 938 741 903		
Mataró		MAREME GRES	Carrer Sant Isidor, 78	+34 931 615 015			
Mataró		ROSA JORDANA RABETLLAT	Carrer de Montserrat, 7	+34 937 903 089	+34 937 903 089		
Molins de Rei		HIJO DE FERNANDO ROCA	Carrer del Pla, 9	+34 936 681 434	+34 936 801 458		
Navàs		PRAT MATERIALS I MAQUINARIA	Carretera de Mujal, 50	+34 938 204 033	+34 938 204 098		
Palau Solita i Plegamans		COMERCIAL SOLSAN	Cami Reial, 109	+34 938 648 125	+34 938 649 617		
Pineda de Mar		AMARGANT	Carrer Santiago Rusiñol, 96	+34 937 671 416	+34 937 627 488		
Sabadell		CASANOVA	Avenida Rafael Casanova 24	+34 937 481 015	+34 937 274 834		
Sant Boi de Llobregat		GARRO	Carretera Sta. Creu de Calafell, km 10,7	+34 936 545 952	+34 938 400 620		
Sant Celoni		FRADERA MATERIALS	Carrer Ramon i Cajal, 1	+34 938 671 512	+34 938 675 318		
Sant Cugat del Valles		FOAP	Avinguda Rius i Taulet, 27	+34 936 740 503	+34 936 755 854		
Sant Fruitós de Bagés		CASANOVA	Carretera de Manresa a Berga km 1. Naus 2-7	+34 938 770 625	+34 938 776 530		
Sant Pol de Mar		AMARGANT	Passatge Parc, 1	+34 937 600 112	+34 937 600 411		
Sant Sadurní d'Anoia		COMERCIAL STC	Rambla Generalitat, 59	+34 931 593 137	+34 931 615 015		
Sant Vicens dels Horts		J. PÉREZ AZNAR	Carretera de Sant Boi, 168-170	+34 936 562 452	+34 936 562 452		
Santpedor		CONSAN	Pol. Ind. Les Verges	+34 938 320 669	+34 938 320 669		
St. Pere de Ribes		SUMCO	Carretera de Barcelona, C-246 km. 42,4	+34 938 933 066	+34 938 936 004		
Taradell		JODUL	Carretera de Vic, km 5,8	+34 938 800 800	+34 938 126 054		
Torelló		JOAN DOT	Carrer Ter, 50	+34 938 504 646	+34 938 504 286		
Vic		CORREIJA	Carrer Mas de Bigas, 8-26	+34 938 854 261	+34 938 894 733		
Vilanova del Camí		PLANELL	Carretera Vilafranca 108-111	+34 938 060 240	+34 938 060 239		
Vilanova del Valles		E. TORRENTS	Carrer Masnou, S/N	+34 938 459 034	+34 938 459 913		
Burgos		Aranda de Duero	GRUPO DISMAR DUERO	Avenida Portugal, Parcela 17	+34 947 513 281	+34 947 513 349	
		Burgos	BIGMAT FONTECHA	Alcalde Martín Cobos,15. Nave 5 y 6	+34 947 485 153	+34 947 483 941	
Cáceres		Miranda de Ebro	JORGE FERNÁNDEZ	Camino Fuente Basilio, s/n	+34 947 323 351	+34 947 314 589	
		Cáceres	PORCELANOSA	Avenida Juan Pablo II, 130	+34 927 236 337	+34 927 236 205	
Cádiz		Moraleja	BIGMAT CAYUELA	Avenida Extremadura, 26	+34 927 515 198	+34 927 147 266	
		Algeciras	PORCELANOSA	Carretera de Málaga, km 109	+34 956 635 282	+34 956 635 285	
Cantabria		El Puerto de Santa María	PORCELANOSA	Polígono El Palmar. Carretera Madrid-Cádiz, km 653,2	+34 956 540 084	+34 956 872 464	
		Jerez de la Frontera	PORCELANOSA	Parque Empresarial, Av. De la Ilustración , 1	+34 956 187 160	+34 956 302 904	
		Olvera	ALMECOR	Avda. Julian Besteiro, 29	+34 956 120 776	+34 956 120 776	
		San Fernando	PORCELANOSA	Polígono Tres Caminos, s/n	+34 956 592 360	+34 956 884 677	
		Ubrique	DOCURRI	Paseo del Prado 38-40	+34 956 462 263	+34 956 462 623	
		Villamartin	AZULGRIF	Calle Rosario, 9	+34 956 730 687	+34 956 730 911	
		Santander	PORCELANOSA	Avenida Parayas, s/n	+34 942 352 510	+34 942 352 638	
		Torrelavega	PORCELANOSA	Boulevard Demetrio Herrero, 1	+34 942 835 026	+34 942 881 787	
		Castellón	Castellón de la Plana	PORCELANOSA	Asensi, 9	+34 964 239 162	+34 964 238 930
			Villarreal	PORCELANOSA	Carretera Vila-real-Puebla de Arenoso (CV-20) km 0,7	+34 964 506 800	+34 964 525 418
Ceuta	Vinaroz	PORCELANOSA	Carretera N-340, km 1.050,1	+34 964 400 944	+34 964 400 650		
	Ceuta	BAEZA	Ampliación Muelle de Poniente, 96	+34 956 511 312	+34 956 511 309		
Ciudad Real	Alcazar de San Juan	PORCELANOSA	Corredera, 56	+34 926 546 727	+34 926 546 727		
Córdoba	Città Real	PORCELANOSA	Carretera de Carrión, 11	+34 926 251 730	+34 926 255 741		
	Córdoba	PORCELANOSA	Carretera N-IV, km 404. Polígono de Torrecilla	+34 957 760 024	+34 957 760 123		
Cuenca	Casas de Haro	MATERIALES DE CONSTRUCCIÓN MARTÍNEZ ORTEGA	Calle Dos de Mayo, 28	+34 969 380 708	+34 969 380 708		
	Cuenca	VICOSAZ	Hermanos Becerril, 6 bajo	+34 969 233 200	+34 969 234 475		
	Tarancón	VICENTE DE LOS RIOS	Avda. del Progreso, 19	+34 969 321 323	+34 969 321 334		
	Villanueva de la Jara	ALMACENES PAÑOS	Camino de Rubielos, 8	+34 967 498 000	+34 967 498 000		
	Arbucies	ARC ARBUCCIES CERAMIQUES	Pol. Ind. Cal Xic-Parc, 4	+34 972 162 364	+34 972 860 954		
Gerona	Blanes	BRECOR SL	Carretera Tordera,79. Blanes	+34 972 336 062	+34 972 358 482		
	Canet de la Tallada	SERVIMAT INICIATIVES	Carretera C-31 km. 354	+34 972 780 524	+34 972 780 827		
	Cornellà del Terri	OLIVERAS	Carretera de Girona a Banyoles km 12,8	+34 972 594 131	+34 972 594 552		
	Esclanyà Begur	MATERIALES CREIXELL	Carrer Palafrugell Regencos. Polígono industrial Riera Esclanya, 1	+34 972 300 628	+34 972 610 772		
	Fígueras	OLIVERAS	Carretera N-II km 759	+34 972 672 259	+34 972 672 255		
	Girona	GIROP	Carrer Llorà, 5	+34 972 393 200	+34 972 393 071		
	Les Prespes	OLIVERAS	Pol. Ind. Les Prespes. Parcel·la 20	+34 972 694 704	+34 972 693 003		
	Lloret de Mar	CARMONA	Carretera de Lloret_Vidreces 2,1	+34 972 372 710	+34 972 349 763		
	Mont-ras	MERCAMAT	Carretera C-31 km. 329,8	+34 972 612 027	+34 972 302 146		
	Palamos	TG NOVA ARQUITECTURA	Avinguda Catalunya,91	+34 972 312 250	+34 972 312 249		
	Paloi d'Onyar-Quart	OLIVERAS	Carretera Comarcal C-250 km 4,3	+34 972 468 119	+34 972 468 123		
	Salt	FULCARA BRUGUE XAVIER	Carrer Rafael Maso, 56	+34 972 234 591	+34 972 402 284		
	Sant Feliu de Guixols	GINESTA	Carrer Santa Magdalena, 11	+34 972 320 529	+34 972 321 616		
	Sarrià de Ter	FERRER CERVIÀ	Avinguda de França, 192	+34 972 173 442	+34 972 173 456		
	Vila-sacra	FRIAS MATERIALS	Carrer Castello, 72	+34 972 670 073	+34 972 673 071		

Shops in Spain

Granada	Armillá	TECMACER	Avenida San Rafael (Junto Sprinter)	+34 958 253 081	+34 958 183 367
Guipúzcoa	San Sebastián	JORGE FERNÁNDEZ	Pol. Ind. Belartza. Fernando Múgika, 15	+34 943 376 966	+34 943 376 841
Huelva	Huelva	PORCELANOSA	Carretera Tráfico Pesado, s/n. Polígono La Paz	+34 959 543 600	+34 959 237 951
Huesca	Ainsa	AINSA - COMERCIAL CAMPODARVE	Pol. Ind. Sobrarbe, Naves 11 y 12	+34 974 500 267	+34 974 500 865
	Fraga	BERGES CENTRO COMERCIAL	Avenida Aragón, 70	+34 974 471 439	+34 974 471 439
	Huesca	PORCELANOSA	Polígono Sepes. Calle Ronda la Industria 1-3 nave C	+34 974 242 738	+34 974 242 676
Jaén	Jaén	PORCELANOSA	Polígono Olivares. Carretera Bailén-Motril, km 32,3	+34 953 280 757	+34 953 284 035
La Coruña	A Coruña	SUMINISTROS VIA-MAR, S.L.	México Rodríguez, 18-20	+34 981 279 431	+34 981 279 431
	Betanzos	SUMINISTROS VIA-MAR, S.L.	Avenida Fraga Iribarne, s/n	+34 981 772 190	+34 981 774 257
	Ferrol	NEIRA Y ORTEGAL, S.L.	Carretera Catabois, 258	+34 981 326 532	+34 981 324 951
	Ortigueira	NEIRA Y ORTEGAL, S.L.	Carretera C-642 s/n, Cuiña	+34 981 400 880	+34 981 400 883
	Santiago de Compostela	PORCELANOSA	Polígono Comercial Costa Vella	+34 981 897 595	+34 981 530 901
	Santiago de Compostela	PORCELANOSA	Rua Clara Campoamor, 13-15 (Montouto) - Teo	+34 981 509 270	+34 981 819 334
	Santiago de Compostela	PORCELANOSA	General Pardiñas, 13-Bajo	+34 981 569 230	+34 981 569 230
La Rioja	Logroño	RIOJACER	Avenida de Burgos, 43-45	+34 941 286 021	+34 941 202 271
Las Palmas	Las Palmas de Gran Canaria	PORCELANAS Y PAVIMENTOS CANARIOS	Avenida Mesa y López, 63	+34 928 472 949	+34 928 472 944
León	San Andrés del Rabanedo	PORCELANOSA	Carretera León-Astorga, km 3,5	+34 987 801 570	+34 987 801 475
Lérida	Agramunt	PRETENSATS CUÑAT	Carrer Capella, 6	+34 973 390 115	+34 973 392 810
	Artesa de Segre	PREFABRICATS LLEIDA	Carretera Agramunt, km. 0,5	+34 973 400 179	+34 973 400 123
	Balaguer	J. FARRÉ	Carrer Urgell, 39	+34 973 445 765	+34 973 445 072
	Cervera	FRANCISCO BELETA ARMENGOL	Avinguda Catalunya, 110-112	+34 973 530 631	+34 973 530 631
	El Pont de Suert	PRETENSADOS RIBERA	Carretera N-230 km 124,5	+34 973 690 063	+34 973 690 400
	La Pobla de Segur	PRETENSATS SOLE	Avinguda Estació,38	+34 973 680 339	+34 973 680 291
	La Seu d'Urgell	MATERIALS PIRINEU	Carretera de Lleida, 28	+34 973 351 850	+34 973 353 410
	Lleida	MATERIALS GERMANS MAURI	Carrer Príncipe de Viana, 36	+34 973 232 139	+34 973 247 943
	Lleida	PUJOL ELEMENTS	Carrer Tarragona, 40	+34 973 202 350	+34 973 203 113
	Solsona	MATERIALS JORDI VILAR	Carretera Manresa, s/n km.50	+34 973 482 077	+34 973 482 373
	Tarrega	TARREGA NOUMAG	Calle Júpiter,7 (Pol. Ind. La Canaleta)	+34 607 497 330	
	Tremp	PRETENSATS SOLE	Carrer Sant Jordi, 2	+34 973 651 588	
	Vielha	PRETENSADOS RIBERA	Carretera França, 40 (Mig Aran)	+34 973 641 460	+34 973 642 271
Lugo	Foz	ALMACENES BAHIA, S.L.	Maestro Lugilde, 6	+34 982 140 957	+34 982 132 065
	Lugo	ARIAS NADELA, S.L.	Tolda de Castiella, s/n	+34 982 245 725	
	Xove	ESTABLECIMIENTOS REY, S.L.	Avda. Diputación, 88	+34 982 592 006	+34 982 592 071
Madrid	Alcobendas	PORCELANOSA	Parque Rio Norte	+34 916 623 232	+34 916 624 607
	Alcorcón	PORCELANOSA	Carretera N-V, km 15,5. Parque Oeste de Alcorcón	+34 916 890 172	+34 916 890 170
	Leganés	PORCELANOSA	Avenida Recomba, 13. Polígono la Laguna Salida 53 - M50	+34 914 819 200	+34 916 930 292
	Madrid	PORCELANOSA	Ortega y Gasset, 62. Esquina Conde Peñalver	+34 914 448 460	+34 914 025 111
	Madrid	PORCELANOSA	Alcalá, 514	+34 917 545 161	+34 917 545 555
Málaga	Antequera	PORCELANOSA	Río de la Villa, 3 Polígono industrial	+34 952 701 819	+34 952 843 751
	Málaga	PORCELANOSA	Avenida Velázquez, 77	+34 952 241 375	+34 952 240 092
	Marbella	PORCELANOSA	Ricardo Soriano, 65	+34 952 826 868	+34 952 822 880
Murcia	Caravaca de la Cruz	PORCELANOSA	Avenida Carretera Granada, 20	+34 968 705 647	+34 968 705 648
	Cartagena	PORCELANOSA	Calle Belgrado, Parcela 81, Polígono industrial Cabezo Beaza	+34 968 529 302	+34 968 528 362
	Lorca	PORCELANOSA	Carretera de Granada, 127. Polígono Los Peñones	+34 968 478 130	+34 968 470 820
	Murcia	PORCELANOSA	Avenida Juan de Borbón, s/n. Parque Comercial Thader	+34 968 879 527	+34 968 831 725
	Yecla	PORCELANOSA	Avenida de la Paz, 195	+34 968 718 048	+34 968 718 048
Navarra	Cintruénigo	CERÁMICAS CECILIO CHIVITE	Pol. Ind. s/n. Variante N-113	+34 948 811 973	+34 948 815 249
	Mulitva Baja	MONTEJO CERÁMICAS	Polígono Carretera Tajonar, Calle-A, Naves 2-4	+34 948 239 065	+34 948 230 503
	Pamplona	MONTEJO CERÁMICAS	Navas de Tolosa, s/n	+34 948 224 000	+34 948 226 424
	Tudela	MONTEJO CERÁMICAS	Carretera Tudela-Tarazona, Polígono Centro de Servicios de Tudela	+34 948 848 365	+34 948 848 573
Orense	Carballiño	JOSE R. PITEIRA, S.L.	Avenida Julio Rodríguez Soto, 63	+34 988 271 071	+34 988 274 780
	Ourense	BLANCO QUINTAS	Nosa señora da Sainza, 48	+34 988 391 114	+34 988 250 413
Palencia	Palencia	CANTALAPIEDRA	Calle La Puebla, nº 2	+34 979 706 421	+34 979 702 652
Pontevedra	Dena - Meaño	PREFABRICADOS DENA, S.L.	Rua de Galicia, 24	+34 986 743 121	+34 986 745 131
	Lalín	ALMACENES CANDA, S.L.	Calle Mosserrat, 36-39	+34 986 780 184	+34 986 782 301
	Mos	BLANCO QUINTAS	Monte Faquína s/n	+34 986 288 041	+34 986 486 316
	O Grove	PREFABRICADOS DENA, S.L.	Calle Alexandre Boveda, 82	+34 986 702 041	+34 986 733 415
	Seixo, Marín	SANEAMIENTOS ROSALES, S.L.	Avenida Doctor Otero Ulloa, 1	+34 986 702 041	+34 986 702 080
	Silleda	ARCOLAR 2000, S.L.	Rua de Venezuela, 40	+34 986 580 114	+34 986 592 513
	Vigo	SANEAMIENTOS ROSALES, S.L.	García Barbón, 139 - B	+34 986 228 806	
Salamanca	Villares de la Reina	PORCELANOSA	Polígono Villares. Carretera Salamanca - Valladolid, km 2,2	+34 923 243 811	+34 923 123 414
Segovia	El Espinar	SEGOGER	Carretera Madrid - La Coruña, km 64	+34 921 172 426	+34 921 171 828
	Segovia	SEGOGER	José Zorrilla, 134	+34 921 444 122	
Sevilla	Lora del Río	HERNÁNDEZ CARBALLO	Betis s/n	+34 955 800 473	+34 955 801 439
	Sevilla	PORCELANOSA	Calle Tipografía, s/n. Polígono Industrial La Negrilla. (Autovía A-92 dirección Granada)	+34 954 260 540	+34 954 528 681
	Tomares	PORCELANOSA	San Roque, s/n. Polígono El Manchón	+34 954 152 792	+34 954 153 188
Soria	Soria	MC ODORICIO	Polígono las Casas-Il. Calles A y J, Parcela 201	+34 975 233 228	+34 975 232 188
Sta. Cruz Tenerife	Los Llanos de Aridane	AFELSA	Las Rosas, s/n	+34 922 461 112	+34 922 461 166
	Santa Cruz de la Palma	AFELSA	Abenguaerme, 3	+34 922 412 143	+34 922 420 012
	Santa Cruz de Tenerife	PORCELANAS Y PAVIMENTOS CANARIOS	Avenida 3 de Mayo, 18	+34 922 209 595	+34 922 209 596
Tarragona	Alcover	EXPOMAT ALCOVER	Calle Tramuntana, s/n (Polígono Roques Roges)	+34 977 760 476	
	Cambrils	MONSERRATE ESTIL CERAMIC	Polígono industrial Belianes nau 5. Carretera Cambrils-Montbrío	+34 977 364 900	+34 977 364 953
	El Vendrell	COMERCIAL STC	Carrer Terrisaires, 1	+34 977 661 951	
	El Vendrell	VIUDA DE ANTONIO FONT	Carrer de Valls 12	+34 977 660 794	+34 977 662 217
	Montblanc	EXCAVACIONES SANS	Avinguda General Prim, 6	+34 977 862 998	+34 977 861 435
	Mora La Nova	COMERCIAL LLAURADO	Carretera de Tivissa, s/n	+34 977 400 387	+34 977 400 052
	Reus	COMERCIAL STC	Plaça De les Oques, 8	+34 977 312 502	+34 977 317 211
	Roda de Bara	CONSTRUCCIONS CIURO	Acceso a Roda de Bara km 1	+34 977 802 951	+34 977 802 012
	Tarragona	MATERIALS GISBERT	Carrer Francesc Macia, 4	+34 977 242 363	
	Tortosa	MATERIALS GISBERT	Carretera Gandesa km 3,5	+34 977 500 306	+34 977 501 550
	Valls	RAMON MAGRIÑA BATALLA	Carrer Montblac, 14	+34 977 600 210	+34 977 603 302
Teruel	Teruel	GARGÓN	Polígono La Paz, Parcela 143-149	+34 978 609 661	+34 978 607 980
Toledo	Illescas	BIGMAT ALOTRANS SL	Avda de las Naciones, 17	+34 925 532 011	+34 925 513 055
	Toledo	PORCELANOSA	Pol. Ind. Santa María de Benquerencia, Calle del Río Marchés,123	+34 925 232 402	+34 925 232 406
Valencia	Albuixech	PORCELANOSA	Avenida del Mediterráneo, Parcela 6. Polígono industrial del Mediterráneo	+34 961 417 227	+34 961 402 389
	Sedaví	PORCELANOSA	Avenida Mediterráneo, s/n. Zona Comercial de Sedaví	+34 963 185 021	+34 963 180 094
	Valencia	PORCELANOSA	Colón, 56	+34 963 530 230	+34 963 531 688
Valladolid	Valladolid	CANTALAPIEDRA	Carretera de Soria A-24, km 5,5	+34 983 217 010	+34 983 200 921
Vizcaya	Amorebieta	BILBU	Barrio Boroa, s/n	+34 946 731 158	+34 946 733 265
	Bilbao	BILBU	Iturriaga, 78	+34 944 113 018	+34 944 128 637
	Bilbao	BILBU	Alameda Recalde, 39 - 41	+34 944 218 625	+34 944 218 879
Zamora	Benavente	GONZÁLEZ Y GONZÁLEZ BERMAR S.L	Polígono Industrial Benavente 2	+34 980 633 484	+34 980 637 552
	Zamora	PORCELANOSA	Avenida Cardenal Cisneros, s/n	+34 980 519 283	+34 980 529 404
Zaragoza	Zaragoza	PORCELANOSA	Parque Comercial Puerto Venecia	+34 976 930 800	+34 976 930 603
	Zaragoza	PORCELANOSA	Autovía de Logroño, km 2	+34 976 403 131	+34 976 300 094
	Zaragoza	PORCELANOSA	Plataforma Logística PLA-ZA, Calle Taormina, 2	+34 876 269 500	+34 876 269 389

International Showrooms

Albania	Tirana	ALBA CERAMICA	+355 4 83 00 084	+355 4 83 00 084
	Tirana	ALBA CERAMICA PORCELANOSA GRUPO	+355 4 22 33 817	+355 4 22 33 817
Alemania	Bad Salzuflen	W. LINNENBECKER GmbH	+49 (0) 5222 / 5301 221	+49 (0) 5222 / 5301 209
	Bergisch Gladbach	SCHMIDT-RUDERSDORF GmbH & Co	+49 (0) 2204 / 4007 0 771	+49 (0) 3320 / 854715
	Berlin	W. LINNENBECKER GmbH & Co. KG	+49 (0) 30 / 756 888	+49 (0) 30 / 756 88 756
	Bonn-Buschdorf	SCHMIDT-RUDERSDORF- Bonn	+49 02 28 - 55 916-0	
	Bottrop	W. LINNENBECKER GmbH & Co. KG	+49 (0) 2041 / 7958 13	+49 (0) 2041 / 7958 10
	Bruchsal	TAXIS - Bruchsal	+49 (0) 72 518 005 0	+49 (0) 72 518 005 40
	Burgstädt	FLIESEN THOMAS Fliesengroßhandel GmbH	+49 (0) 3724 / 1856 0	+49 (0) 3724 / 1856 70
	Crailsheim	TAXIS - Crailsheim	+49 (0) 7951 301 0	+49 (0) 7951 301 100
	Dortmund	W. LINNENBECKER GmbH & Co. KG	+49 (0) 231 / 562 090 22	+49 (0) 231 / 562 090 88
	Erkrath	W. LINNENBECKER GmbH	+49 (0) 211 / 92503 19	+49 (0) 211 / 92503 34
	Frankfurt	KÖBIG FRANKFURT, Haus der Fliesen Hanauer	+49 069 405 00 36	+49 069 405 00 370
	Freiburg	GÖTZ & MORIZ GmbH	+49 (0) 76 145 180	+49 (0) 76 145 711 2
	Hamburg - Lurup	CROONEN FLIESENHANDEL GmbH	+49 (0) 40 / 83383 377	+49 (0) 40 / 83383 301
	Kehl / Rhein	TAXIS - Kehl	+49 (0) 78 519 383 16	+49 (0) 78 519 383 20
	Koblentz	J. N. KÖBIG GmbH - Koblentz	+49 (0) 26 198 169 20	+49 (0) 26 198 169 10
	Kranichfeld	MÜHL 24 - Kranichfeld	+49 (0) 36 450 330	+49 (0) 36 450 332 89
	Leverkusen	SCHMIDT-RUDERSDORF - Leverkusen	+49 02 14 - 8 68 13 0	+49 02 14 - 8 68 13 13
	Mainz	J. N. KÖBIG GmbH - Mainz	+49 061 316 943 10	+49 061 316 942 75
	Meschede	W. LINNENBECKER GmbH & Co. KG	+49 (0) 291 / 952 82 82	+49 (0) 291 / 952 82 82
	München	CERAMICAS OHG	+49 (0) 89 318 280 0	+49 (0) 89 318 280 20
	Münster	W. LINNENBECKER GmbH & Co. KG	+49 (0) 251 / 979 12 21	+49 (0) 251 / 979 1220
	Reutlingen	TAXIS - Reutlingen	+49 (0) 71 219 884 0	+49 (0) 71 219 884 40
	Ronnenberg / Empelde	W. LINNENBECKER GmbH & Co. KG	+49 (0) 511 / 438 90 36	+49 (0) 511 / 438 90 49
	Stuttgart	TAXIS - Stuttgart	+49 (0) 71 189 003 121	+49 (0) 71 189 003 104
	VS-Schwenningen	TAXIS - Schwenningen	+49 (0) 77 206 927 0	+49 (0) 77 206 927 35
	Wiesbaden-Biebrich	J. N. KÖBIG GmbH - Wiesbaden	+49 (0) 611 27810	+49 (0) 611 25674
	Wurselen	SCHMIDT-RUDERSDORF - Wurselen	+49 0 24 05 - 41 38 50	+49 0 24 05 - 41 38 55
Andorra	Andorra la Vella	MATERIALS PIRINEU	+376 822 353	
Angola	Luanda	PORCELANOSA ANGOLA	+244 928463705	+244 222372374
Arabia Saudí	Al ahsa (Al-Sharqiyya)	KHALED AL ANSARI SHOWROOM	+966 3 5892888	+966 3 5817043
	Jeddah	MANART AL ANDALOS EST	+966 2 629 3402	+966 2 629 3416
Argentina	Riyadh	MANART AL ANDALOS EST	+966 1 282 1500	
	Buenos Aires	BARUGEL, AZULAY & CIA	+54 11 4704 1500	
	Buenos Aires	BLAISTEN S.A.	+54 11 463 620 00	+54 11 463 614 86
Armenia	Yerevan	SACO & ARARAT-SALON BOMOND	+37 410 55 08 99	+37 410 51 75 81
Australia	Adelaide	ITALY CERAMICS	+61 8 8336 2366	+61 8 8336 9016
	Brisbane	ACE STONE & TILES	+61 7 5493 3344	+61 7 5493 3117
	Melbourne	EARP BROS TILE - MELBOURNE	+61 3 9328 8598	+61 3 9348 9996
	Newcastle	EARP BROS TILE - NEWCASTLE	+61 2 4925 4555	+61 2 4962 2926
	Osborne Park	MIDDLE SWAN TRADING	+61 8 9445 1777	+61 8 9446 3127
	Sydney	EARP BROS TILE - SYDNEY	+61 2 9410 3222	+61 2 9410 2011
Austria	Bruck/Mur	TENNE BRÜCK	+43 3862 588 44	+43 3862 588 44-22
	Graz	FLIESEN TENNE	+43 316 262 524 0	+43 316 262 524 22
	Hall	BEINKOFER BEI HOLTER	+43 (0) 5223 5046910	+43 (0) 5223 5046919
	Insbruck	FLIESEN CENTER TIROL	+43 (0) 512 364444	
	Leibnitz	TENNE LIBNITZ KINDERMANN BAD & HEIZTECHNIK	+43 3452 707-65	+43 3452 707-29
	Linz	BEINKOFER	+43 732 776 543 0	+43 732 776 543 60
	Linz	BEINKOFER	+43 (0) 732 6552550	+43 (0) 732 65525520
	Salzburg	BEINKOFER BEI HOLTER	+43 (0) 662 46909620	+43 (0) 662 469094289
	Vösendorf	TENNE VÖSENDORF	+43 1 699 33 33	+43 1 699 33 33-22
	Wels	BEINKOFER BEI HOLTER	+43 (0) 7242 25253210	+43 (0) 7242 25253250
	Wien	BEINKOFER BEI HOLTER	+43 (0) 1 61516006900	+43 (0) 1 61516006909
	Wien	FLIESENFÜHRER HANDELS GmbH	+43 1 5971 533 0	+43 1 5971 533 28
	Wien	TENNE WIEN 22 BADKULT-NORT	+43 1 20 20 520	+43 1 20 20 520-20
	Wien	BEINKOFER BEI BÄDERPARADIES	+43 (0) 1 52242200	+43 (0) 1 522422020
Azerbaijån	Baku	AKESUAR INSAAT	+994 12 546 74 86	+994 12 546 74 86
	Baku	AKESUAR PORCELANOSA GRUPO	+994 12 596 25 48 - +994 12 497 31 03	+994 12 447 43 83
Bahrån	Manama	AL ABBAS GALLERY	+973 741 919	+973 741 747
Bélgica	Heist-op-den-Berg	PGB CERAMICA NV	+32 (0)15 253366	+32 (0)15 253367
Bielorrusia	Gomel	POLCAR IMPEX	+375 2327 76919	+375 2327 76757
	Minsk	Domiar	+375 17 259 60 33	+375 17 259 6212
	Minsk	POLCAR IMPEX	+375 1721 78785	+375 1721 75632
Bolivia	Santa Cruz	ELEMENTO DISEÑO & ARQUITECTURA	+591 3 364 7313	+591 3 347 6226
Bosnia-Herzegovina	Banja Luka	LUK d.o.o.	+387 51 379 261/262	+387 51 370 887
	Bijeljina	LUK d.o.o.	+387 55 228 100	+387 55 228 101
	Citluk	BROTIS d.o.o.	+387 633 21500	+387 366 50950
	Sarajevo	LUK d.o.o.	+387 33 777 888	+387 33 777 889
Brasil	Campo Largo	PORCELANOSA BRASIL REVESTIMENTOS LTDA	+55 (41) 3392 1500	+55 (41) 3392 1400
	Petrich	NIKMAR	+359 866 321 111	+359 745 234 64
	Sofia	ELIS-GE EOOD	+359 2 860 60 60	
	Sofia	NIKMAR	+395 888 143 313	
	Sofia	NIKMAR	+359 2 868 93 95	
	Varna	ELIS-GE EOOD	+395 52 500 555	
Canadá	Calgary	PORCELANOSA Calgary	(587) 349-2290	
	Vancouver	FONITILE DISTRIBUTORS	+604 683 9358	+604 683 6758
Chile	Las Condes	PORCELANOSA GRUPO CHILE	+569 5 653 4306	
	Santiago de Chile	ATIKA	(56 2) 2488 3000	(56 2) 2488 3001
	Santiago de Chile	BUDNIK HERMANOS S.A.	+562 398 0100	+562 212 3058
China	Beijing	PO YICK BUILDING MATERIALS Co. Ltd.	+86 10 8527 1313	+86 10 6422 9976
	Changchun	MEI LI MING JIA	0431-84555263	
	Dalian	JONG GONG		
	Dalian	WU XING SHANG JIANG	0411-84642028	
	Fuzhou	FUZHOU JINAN PO YICK BUILDING MATERIALS SHOP	+86 591 8805 5823	+86 591 8805 5823
	Fuzhou	YI JIA	0591-87144372	
	Guangzhou	PO YICK BUILDING MATERIALS Co. Ltd. (FAFA)	+86 20 2200 8228	+86 20 2200 8230
	Guangzhou	PO YICK BUILDING MATERIALS Co. Ltd. (MAFO)	+86 20 8701 8223	+86 20 8701 8226
	Hangzhou	SAN RONG	0571-86085805	
	Harbin	GUA XIA	-	
	Qingdao	TUO LI KONG JIAN		
	Shanghai	EURO BUILDING MATERIAL SUPPLIES (EURO)	021-64682083	
	Shanghai	JIA SHU JIA		
	Shanghai	MEIKALONG	021-32510621	
	Shanghai	GUANGZHOU PO YICK DECORATION DESIGN CO LTD SHANGHAI BRANCH	+86 21 6438 3735	+86 21 6428 1607
	Shanghai	Porcelanosa Grupo Shanghai	021 54255610	
	Shenyang	BAO LU SHA PO YICK BUILDING MATERIALS Co. Ltd.	+86 24 8563 7137	+86 24 8563 7137
	Shenyang	WU XING SHANG JIANG	024-64671727	
	Shenzhen	PO YICK BUILDING MATERIALS Co. Ltd. (BAILIMA)	+86 755 8240 7728	+86 755 8240 7738
	Shenzhen	PO YICK BUILDING MATERIALS Co. Ltd. (HONGHU LU)	+86 755 2562 0359	+86 755 2562 0344
	Taizhou	MING DU SHI JIA	0576-81891333	
	Tianjin	JIA ZHI YUN	022-27839766	
	Tianjin	Porcelanosa Grupo Tianjin	18622088585	
	Wuhan	JING LI TIAN	027-83568709	
	Xiamen	XIAMEN PO YICK BUILDING MATERIALS SHOP	+86 952 3755123	+86 591 88055823
	Xian	JU CHENG	029-85364486	
	Xian	PIN GE	029-68755405	
Chipre	Girne	MEPAS LTD	9039 2815 2964	9039 2815 5651
	Limassol	THE ENGINEERING AND COMMERCIAL ASSOCIATION (EKA)	+357 2585 4444	+357 2585 4545
Chipe	Nicosia	MAOURIS OIKOSET	22444555	
Colombia	Barranquilla	D.I.M.C.E.	+57 5 3006208	
	Bogotá	PROSEIN	+57 743 5566	
	Bogotá	PORCELANOSA GRUPO COLOMBIA	+571 310 02 45	

International Showrooms

Croacia	Porec	SPINA	+385 52 451 348	+385 52 434 005	
	Pula	SPINA	+385 52 219 002	+385 52 219 118	
	Rijeka	SPINA	+385 51 741 300	+385 51 741 298	
	Split	SPINA	+385 21 668 991	+385 21 668 992	
	Varazdin	SPINA	+385 42 303 707	+385 42 303 709	
Ecuador	Zagreb	SPINA	+385 13 492 552	+385 13 492 560	
	Guayaquil	ARKETIP'S CA	+593 422 467 52	+593 422 403 96	
	Quito	ARKETIP'S CA	+593 422 498 39	+593 225 573 99	
EE.UU.	Quito	TERRAZOS DE LOS ANDES	2 241 2284		
	Anaheim	PORCELANOSA ANAHEIM	+1 714 772 3183	+1 714 772 9851	
	Atlanta	PORCELANOSA ATLANTA	3057157153		
	Boston	PORCELANOSA BOSTON - BOSTON DESIGN CENTER	+1 617-963-7666		
	Chicago	PORCELANOSA CHICAGO	+1 312 204 6220	+1 312 204 6240	
	Dallas	PORCELANOSA DALLAS	+1 214 377 2327	+1 214 234 1340	
	East Brunswick	PORCELANOSA EAST BRUNSWICK	+1 732 613 1915	+1 732 613 9181	
	Miami	PORCELANOSA MIAMI	+1 305 715 7153	+1 305 592 6999	
	New York	PORCELANOSA NYDC	+1 212 252 7370		
	North Bethesda	PORCELANOSA ROCKVILLE	+1 301 294 8193		
	Paramus	PORCELANOSA PARAMUS	+1 201 712 0556	+1 201 599 1520	
	Pompano Beach	PORCELANOSA POMPANO BEACH	+1 954 968 7666	+1 954 968 7699	
	Ramsey	PORCELANOSA RAMSEY	+1 201 995 1310	+1 201 995 1960	
	Riverside	PORCELANOSA RIVERSIDE	+1 203 698 7618	+1 203 698 7619	
	San Francisco	PORCELANOSA SAN FRANCISCO	+1 415 593 7763	+1 415 593 7664	
	San Jose	PORCELANOSA SAN JOSE	+1 408 467 9400	+1 408 467 9410	
	West Hollywood	PORCELANOSA WEST HOLLYWOOD	+1 310-300-2090		
	Westbury	PORCELANOSA WESTBURY	+1 516 338 0097	+1 516 338 0098	
	Egipto	El Cairo	MAHGOUNB TRADING & IMPORTING	+20 2 57 12 565	+20 2 57 39 344
		Abu Dhabi	GALAXY BUILDING MATERIALS TRADING	+971 2 2222191	+971 2 6354665
Emiratos Árabes Unidos	Al Khabisi (Dubai)	GALAXY TRADING	+971 42696882		
	Bratislava	CERSA	421244442833	421244642113	
Eslovaquia	Kosice	ELKEM	055 7281 611	055 7281 617	
	Kosice	VODOARM	055/6222660	055/6222654	
Eslovenia	Maribor	MAVI Maribor d.o.o.	+386 2 23 50 316	+386 2 23 50 312	
Estonia	Tallinn	PLAADIPUNKT	+372 650 0720	+372 650 0723	
Federación Rusa	Grozny	BOMOND	+7 (8712) 224 546		
	Khabarovsk	DOM APEX	(4232) 30 06 88		
	Khimki	ZODIAC	+7 (495) 747 31 69		
	Krasnodar	SALON BOMOND	+7 (862) 234 10 75		
	Makhachkala	T. D. MODERN	+7 (8722) 676 569		
	Moscow	ARTISAN	+7 (495) 742 40 40		
	Moscow	DOM PLITKI	+7 (499) 317 13 81		
	Moscow	MASTER DOM	(499) 120 00 77		
	Moscow	MASTER DOM	(499) 120 00 77		
	Moscow	SALON UNDERGROUND	+7 (495) 253 69 32		
	Moscow	ZODIAC	+7 (495) 984 28 57		
	Moscow	ZODIAC	+7 (495) 730 97 97		
	Moscow	ZODIAC	+7 (495) 221 75 00		
	Mytisch	ZODIAC	+7 (495) 221 75 00		
	Novosibirsk	4STYLE	+7 (383) 303 15 46		
	Pyatigorsk	SALON BOMOND	+7 (8793) 975 544		
	Rostov Na Donu	SALON BOMOND	+7 (863) 266 50 34		
	Sochi	SALON BOMOND	+7 (8622) 612 317		
	St. Petersburg	DOM LAVERNA	+7 (812) 327 94 09		
	St. Petersburg	DOM LAVERNA	+7 (812) 7777 030		
	St. Petersburg	DOM LAVERNA	+7 (812) 329 56 65		
	St. Petersburg	SALON ELITNOY KERAMIKI NOVUS	+7 (812) 325 12 45		
	St. Petersburg	ZODIAC	+7 812 994 79 49		
	Stavropol	SALON VALENCIA	+7 (8652) 298 151		
	Vladivostok	DOM APEX	+7 (4232) 300 688		
	Volgograd	BOMOND	+7 (8442) 944 709		
			KERAMIKA & KERAMONGRANIT	+7 (4012) 370 460	
Filipinas	Taguig (Manila)	CASA EUROPA INC.	+63 2 519 3515		
Finlandia	Espoo (Suomenespoja)	LAATTAPISTE ESPOO	+358 (0)207 880 750		
	Hämeenlinna	LAATTAPISTE HÄMEENLINNA	+358 (0)207 414 770		
	Hyyinkää	LAATTAPISTE HYYINKÄÄ	+358 (019) 455 830		
	Joensuu	LAATTAPISTE JOENSUU	+358 (0)207 880 880		
	Jyväskylä	LAATTAPISTE JYVÄSKYLÄ	+358 (0)207 433830		
	Kotka	LAATTAPISTE KOTKA	+358 (0)102 314 100		
	Kouvola	LAATTAPISTE KOUVOLA	+358 (0)20 7880 760		
	Kuopio	LAATTAPISTE KUOPIO	+358 (0)17-266 3500		
	Lahti	LAATTAPISTE LAHTI	+358 (03) 875 950		
	Lappeenranta	LAATTAPISTE LAPPEENRANTA	+358 (0)207 880 720		
	Mikkeli	LAATTAPISTE MIKKELI	+358 (015) 212 055		
	Oulu	LAATTAPISTE OULU	+358 (0)20 7880 780		
	Pori	LAATTAPISTE PORI	+358 (0)207 288 320		
	Porvoo	LAATTAPISTE PORVOO	+358 (019) 5766767		
	Raisio	LAATTAPISTE TURKU	+358 0207 288 300		
	Rauma	LAATTAPISTE RAUMA	+358 (0)207 288 310		
	Rovaniemi	LAATTAPISTE ROVANIEMI	+358 (016) 310 403		
	Salo	LAATTAPISTE SALO	+358 (02) 733 1494		
	Savonlinna	LAATTAPISTE SAVONLINNA	+358 (015) 522 178		
	Seinäjoeki	LAATTAPISTE SEINÄJOKI	+358 (0)207 880 700		
Tampere	LAATTAPISTE TAMPERE	+358 (03) 3142 3300			
Vaasa	LAATTAPISTE VAASA	+358 (0)207 880 740			
Vantaa	LAATTAPISTE OY	+358 9 878031	+358 9 890832		
Francia	Ajaccio	ART ET STYLES	+33 (0)495 221 999	+33 (0)495 231 547	
	Arcueil	PORCELANOSA PARIS PORTE D'ORLEANS	+33 (0)149 121 257	+33 (0)149 121 258	
	Aubagne	PORCELANOSA MARSEILLE	+33 (0)442 624 330	+33 (0)442 624 339	
	Beaucouzé	PORCELANOSA ANGERS	+33 (0)241 738 100	+33 (0)241 733 721	
	Besançon	PORCELANOSA BESANÇON	+33 (0)381 416 363	+33 (0)381 416 369	
	Biguglia	ART ET STYLES	+33 (0)495 589 898	+33 (0)495 305 318	
	Brest	PORCELANOSA BREST	+33 (0)298 025 100	+33 (0)298 415 401	
	Chambray les Tours	PORCELANOSA TOURS	+33 (0)247 808 787	+33 (0)247 808 789	
	Champagne Au Mont d'Or	PORCELANOSA LYON	+33 (0)478 668 151	+33 (0)478 432 003	
	Chasseneuil Du Poitou	PORCELANOSA POITIERS	+33 (0)549 119 787	+33 (0)549 119 788	
	Chenôve	PORCELANOSA DIJON	+33 (0)380 588 701	+33 (0)380 588 595	
	Coignières	PORCELANOSA COIGNIERES	+33 (0)130 491 280	+33 (0)130 491328	
	Guerande	PORCELANOSA LA BAULE	+33 (0)240 607 273	+33 (0)240 110 659	
	La Chapelle Saint Aubin	PORCELANOSA LE MANS	+33 (0)243 236 520	+33 (0)243 240 512	
	La Roche sur Yon	PORCELANOSA LA ROCHE S/YON	+33 (0)251 241 217	+33 (0)251 242 399	
	Les Pennes Mirabeau	PORCELANOSA PLAN DE CAMPAGNE	+33 (0)442 466 120	+33 (0)442 466 129	
	Lezennes	PORCELANOSA LILLE	+33 (0)320 340 340	+33 (0)320 340 341	
	Lorient	PORCELANOSA LORIENT	+33 (0)297 875 000	+33 (0)297 370 607	
	Mandelieu La Napoule	PORCELANOSA CANNES/MANDELIEU	+33 (0)493 477 360	+33 (0)493 477 402	
	Meaux	PORCELANOSA MEAUX	+33 (0)160 092828		
	Merignac	PORCELANOSA BORDEAUX	+33 (0)556 124 848	+33 (0)556 124 849	
	Mondeville	PORCELANOSA CAEN	+33 (0)231 820 000	+33 (0)231 820 019	
	Montigny - Les Corneilles	PORCELANOSA MONTIGNY	+33 (0)139 311979	+33 (0)139 311492	
	Nice	Porcelanosa Nice	+33 (0)493 041 963		
	Nîmes	PORCELANOSA NÎMES	+33 (0)466 282 780	+33 (0)466 282 781	
	Olivet	PORCELANOSA ORLEANS	+33 (0)238 496 961	+33 (0)238 496 969	
	Orvault	PORCELANOSA NANTES	+33 (0)228 073 950	+33 (0)228 073 957	
Paris	STUDIO PORCELANOSA	+33 (0)142 848 400	+33 (0)145 489 184		
Pérols	PORCELANOSA MONTPPELLIER	+33 (0)467 503 600	+33 (0)467 501 121		

International Showrooms

Francia	Saint Grégoire - Rennes	PORCELANOSA RENNES	+33 (0)223 200 808	+33 (0)299 369 688	
	Sotteville les Rouen	PORCELANOSA ROUEN	+33 (0)235 650 655	+33 (0)235 650 656	
	Toulouse	PORCELANOSA TOULOUSE SAS	+33 (0)534 565 760	+33 (0)534 565 786	
	Vannes	PORCELANOSA VANNES	+33 (0)297 460 292	+33 (0)297 461 210	
	Vendenheim	PORCELANOSA STRASBOURG	+33 (0)388 209 212	+33 (0)388 209 107	
	Vert Saint Denis	PORCELANOSA MELUN	+33 (0)160 565 747	+33 (0)160 569 080	
Georgia	Writtenheim	PORCELANOSA MULHOUSE	+33 (0)389 570 260	+33 (0)389 570 261	
	Tbilisi	LUXOR SHOP	+995 32332960	+995 32001368	
Ghana	Dzorwulu-Accra	ROUGE INTERIORS	+223 302 734752		
Gibraltar	Gibraltar	LIFESTYLE DESIGN STUDIO LTD	35020066390		
Grecia	Atenas	PORCELANA	210 9607010	210 9607013	
	Atenas	PORCELANA	210 5156163	210 5156164	
	Atenas	PORCELANA	2299041090	2299041095	
	Attica	AURORA BAGNO	+30 2105 594 520	+30 2105 594 521	
	Glifada	HATZ GROUP	+30 2310 752 902	+30 2310 753 564	
	Ioannina	PORCELANA	26510 92735-7	26510 92738	
	Kastoria	PORCELANA	2467044174		
	Katerini	PORCELANA	2351076941	2351076940	
	Kefalonia	PORCELANA	2671068360	26710 68 361	
	Larisa	PORCELANA	2410561280		
	Larisa	PORCELANA	2410 619999	2410 617444	
	Lefkada	PORCELANA	26450 72100	26450 29130	
	Nafpaktos	PORCELANA	2634038393	26710 68 361	
	Patra	PORCELANA	2610524000	2610523532	
	Patra	PORCELANA	2610647474	2610242010	
	Rhodes	PORCELANA	2241003315	2241003316	
	Serres	PORCELANA	2321036157		
	Thessaloniki	PORCELANA	2310700861	2310700861	
	Thessaloniki	PORCELANA	2310753003	2310753003	
	Thessaloniki	PORCELANA	2310474767	2310 474403	
Trikala	PORCELANA	2351076941			
Guadalupe	Baie Mahault	GUADELOUPE CERAMIQUE	590 266 261	590 266 412	
	Cayenne	ETS HENRY LE GAC	+594 302 719	+594 300 713	
Guayana Francesa	Kowloon	TAI YICK BUILDING MATERIALS	+852 23 956 670	+852 23 957 831	
	Békéscsaba	PALATINUS FURDOSZOBASZALONOK	+36 66 328 432	+36 66 328 432	
Hong Kong	Budapest	PALATINUS FURDOSZOBASZALONOK	+36 1 430 04 17	+36 1 387 91 36	
	Budapest	PORCAHUNGARY KFT	+36 1 237 08 78		
	Drebecen	PALATINUS FURDOSZOBASZALONOK	+36 52 531 476	+36 52 536 822	
	Eger	PALATINUS FURDOSZOBASZALONOK	+36 0636 312 013	+36 0636 312 270	
	Gyöngyös	PALATINUS FURDOSZOBASZALONOK	+36 37 500 162	+36 37 500 163	
	Kecskemét	PALATINUS FURDOSZOBASZALONOK	+36 76 412 272	+36 76 509 204	
	Miskolc	PALATINUS FURDOSZOBASZALONOK	+36 46 412 741	+36 46 416 256	
	Erbil	AKSEUAR INSAAT ERBIL	+964 750 835 0055	+964 66 210 1900	
	Iraq	O.B. HEATING, PLUMBING, BATHROOMS & TILES	+353 0 214 310 000	+353 0 214 310 003	
	Irlanda	Dublin	TILESTYLE LTD	+00 353 1 8555200	+00 353 1 8557471
	Islandia	Reykjavik - 4	ALFABORG EHF	+354 568 6755	+354 568 1277
		Beersheva	KIMCHI	+972 8 628 2060	+972 8 623 2369
	Israel	Bethlehem St. (West Bank)	AL-KHAYAL (BAYTOUNA)	+972 2 277 7279	+972 2 274 4026
		Bney Brak	HEZI BANK	+972 3 616 6641	+972 4 904 6643
		Haifa	TOPOLSKI & CO LTD	+972 4 904 0496	+972 4 904 0455
		Jerusalem	AS OZ	+972 2 6483015	+972 2 6781482
Jerusalem		BAR-AMI 1990 LTD	+972 2 531 3444	+972 2 538 3740	
Raanana		AMOZI NAGAR IMP.MARK. OGEN LTD	+972 9 760 1501	+972 9 741 1997	
Upper Galily		KAMARIKA	+972 4 680 1010	+972 4 680 0318	
Andria		MIDL-CERAMICHE S.A.S	+39 08 835 66466	+39 08 835 49260	
Cassino		Ceramiche dueP s.r.l.	(+39) 077625142		
Corsico		PORCELANOSA LOMBARDIA	+39 02 458 64310	+39 02 458 64415	
Roma	PORCELANOSA ROMA	+39 06 888 9977	+39 06 888 7056		
Sassuolo	PORCELANOSA	+39 05 368 06677	+39 05 368 02184		
Jersey	St. Saviour	PASTELLA GROUP	01534 723199		
Jordania	Amman	AYMAN ABDALLAT & PARTNERS CO.	+9626-5504592/92/93/95	+9626-5514149	
Kosovo	Prishtina	N P KERASAN	+381 38 602 667	+381 38 602 667	
Kuwait	Safat	HASSAN ABUL HASSAN SADIQ	+965 262 4466	+965 265 1444	
Letonia	Riga	TORMANIS UN PARTNERI	+371 784 5361	+371 784 5360	
Libano	Beirut	GEAHCHAN GROUP	+961 1 480520	961 1 496607	
	Beirut	PORCELANOSA GROUP BEIRUT	+961 1 480520	+961 1 496607	
Libia	Benghazi	BEN ALI GROUP	612220618		
	Berka benhazi	MANART AL ANDALOS EST	21861229605		
Lituania	Alytus	IRIS LTD	+370 315 55969	+370 315 55968	
Malta	Birkirkara	ROGER SATARIANO & SONS LTD	+356 21 442 769	+356 21 497 017	
	St Julian	FREE PHONE TAXI (STYLISH BAHROOM)	35621382512		
Marruecos	Casablanca	CERAMEX	+212 945 3646166	+212 5223 395363	
	Casablanca	GLOBE CERAMIQUE SA	212522394301	212522394303	
	Casablanca	SANITAIRES 2000	+212 22 363 225	+212 22 394 100	
	Tanger	FACENOR S.A.	+212 39 941 910	+212 39 945 445	
Martinica	Lamentin	JOSEPH COTTRELL S.A.	+596 509 810	+596 506 524	
México	Interlomas	DESIGN CENTER INTERLOMAS	+55 36 05 00 64 - +55 36 05 00 65	+55 36 05 00 67	
	México DF	PORCELANOSA MÉXICO	+55 5831 7340		
	Valle Dorado	PORCELANOSA MÉXICO	+55 2620 0186 - +55 5831 7340 - 01 800 833 23 02		
Moldavia	Chisinau	PLIMED	+373 2 2501252/54/55/56	+373 2 2716824	
Mónaco	Monaco	Porcelanosa Monaco	37793502387		
Mongolia	Ulaanbaatar	ZUUNNAIMAN SUVRAGA CO.LTD	+976 (11) 3414 217		
Noruega	Bergen	NORFLIS VEST	47 55948260		
Omán	Muscat	ROYAL TILES CO	+968 9586 8897		
Países Bajos	Amsterdam	PGN CERAMICA B.V.	+32 (0)15 253366	+32 (0)15 253367	
Panamá	Punta Pacifica	EUROCEC S.A.	+507 21 53660		
	Lima	ARQ-STUDIO	+51 143 5729		
	Lima	ARQ-STUDIO	+511 372 3462		
	Lima	ARQ-STUDIO	+511 421 7106		
	Lima	CASSINELLI	+51 14 513 712	+51 15 612 757	
	San Isidro	PORCELANOSA GRUPO PERÚ	+519 4600 7828		
Polonia	Bialystok	AKCESS	+48 85 6643436	+48 85 6643434	
	Bielsko Biala	ADARI	+48 33 822 0449	+48 33 822 0449	
	Bielsko Biala	P.H.U. CERAMED	+48 33 829 8770	+48 33 829 8773	
	Bydgoszcz	CERMAG POZNAN (BYDGOSZCZ)	+48 52 348 93 43	+48 52 348 93 54	
	Czestochowa	P.H.U. FUGA	+48 343682944	+48 343682944	
	Glwice	ADARI	+48 32 232 2155	+48 32 232 2155	
	Glwice	ART CERAMIKA	+48 32 339 8200	+48 32 339 8209	
	Glwice	SANIMEX	0322 708 029		
	Gorzów Wlkp	CERMAG POZNAN (GORZÓW WLKP)	+48 95 721 41 08	+48 95 721 41 08	
	Gorzów Wlkp	STEMAR	0957 204 555		
	Katowice	ADARI	+48 32 258 9574	+48 32 258 9574	
	Katowice	SANIMEX	+48 32 735 27 14		
	Kielce	EXCLUSIVE	+48 41 345 75 49		
	Kolobrzeg	CERMAG POZNAN (KOLOBRZEG)	+48 94 355 18 88	+48 94 355 18 80	
	Kraków	MAX FLIZ	+48 01 229 07060	+48 01 229 07060	
	Leszno	CERMAG POZNAN (LESZNO)	+48 65 529 63 63	+48 65 529 63 63	
	Lodz	FUMINO	+48 426373767		
	Lodz	GRES	0814 450 301		
	Lublin	AND-BUD	081 469 9617		
	Lublin	EGEN	+48 81 441 58 42	+48 81 441 80 74	
	Olsztyn	CERMAG POZNAN (OLSZTYN)	+48 89 534 41 21		
	Olsztyn	KWADRAT	089 539 1646		
	Ostrów Wlkp	CERMAG POZNAN (OSTRÓW WLKP)	+48 62 735 81 12	+48 62 737 28 91	
	Poznan	CERMAG POZNAN	+48 61 835 97 50 54	+48 61 830 23 78	
	Poznan	STEMAR	616425802		

International Showrooms

Polonia	Radom	CAMERO DESIGN	+48 48 385 1400		
	Radom	CERAMIKA PRIMUS	+48 48 381 0287	+48 48 381 0290	
	Rybnik	SANIMEX	+48 32 424 44 34		
	Rzeszów	AND-BUD	017 785 1020		
	Rzeszów	F.H. BOZ S.A.	+48 17 850 0315	+48 17 850 0341	
	Sopot	CERMAG POZNAN (SOPOT)	+48 58 550 4235	+48 58 550 5459	
	Szczecin	STEMAR	+48 91 453 17 82		
	Tarnobrzeg	AND-BUD	015 823 0148		
	Warszawa	ANICAR	+48 22 843 70 98		
	Warszawa	ANICAR	0226 730 371		
	Warszawa	ANICAR	+48 22 658 08 05		
	Warszawa	CERMAG POZNAN (WARSZAWA)	+48 22 252 57 39	+48 22 252 57 39	
	Warszawa	GRESTON	+48 022 720 5525	+48 022 720 5524	
	Warszawa	WOIS SP Z.O.O	+48 22 6127213	+48 22 6127216	
Wroclaw	CERMAG POZNAN (WROCLAW)	+48 717 820 021	+48 717 820 031		
Wroclaw	MAX FLIZ	0784 980 809			
Portugal	BRAGANÇA	DCMT-DECORAÇÃO E MATERIAIS DE CONST.LDA	+351 273333849	+351 273333848	
	CHAVES	FLAVIGRES, S.A.	+351 276 341102	+351 276 341736	
	FUNCHAL	MATA S.A	+351 291930110	+351 291936412	
	Lisboa	PORCELANOSA LISBOA	+351 218 313 020	+351 218 313 029	
	MONÇÃO	HEITOR CAMPOS AMOEDO LDA	+351 251652474	+351 251652446	
	Ponta Delgada	FURMAT - MATERIAIS DE CONSTRUÇÃO, LDA	+351 296 629 277		
	Porto	PORCELANOSA PORTO	+351 226 166 600	+351 226 161 959	
Puerto Rico	Viseu	PORCELANOSA VISEU	+351 232 430440	+351 232 430449	
	Guaynabo	THE TILE SHOP	+1 787 720 2030	+1 787 790 2030	
Qatar	San Juan	THE TILE SHOP	+1 787 775 2030	+1 787 707 0138	
	Qatar	UNITED SUPPLIES	+974 46 85 164	+974 46 85 165	
Reino Unido	Bristol	PORCELANOSA WESTERN	0117 959 71 51	0117 959 71 55	
	Cannock	PORCELANOSA MIDLANDS	01543 223025	01543 462959	
	Cardiff	PORCELANOSA WESTERN	0292 0465 166	0292 0465 156	
	Croydon	PORCELANOSA SOUTH EAST	08444 818 953	08444 818 963	
	Doncaster	PORCELANOSA YORKSHIRE	01302 30 47 13	01302 30 47 15	
	Edinburgh	PORCELANOSA SCOTLAND	0131 335 38 83	0131 335 38 84	
	Exeter	PORCELANOSA WESTERN	01392 215 552	01392 215 557	
	Fulham	PORCELANOSA SOUTH EAST	08444 818 952	08444 818 962	
	Glasgow	PORCELANOSA SCOTLAND	0141 533 1000	0141 533 1007	
	Leeds	PORCELANOSA YORKSHIRE	0113 24 44 223	0113 24 34 024	
	London	PORCELANOSA SOUTH EAST	08444 818 959	08444 818 969	
	Manchester	PORCELANOSA NORTH WEST	0161 817 33 00	0161 817 33 01	
	Newcastle Upon Tyne	PORCELANOSA SCOTLAND	0191 272 5224	0191 272 2986	
	Norwich	PORCELANOSA SOUTH EAST	08444 818 958	08444 818 968	
	Nottingham	PORCELANOSA MIDLANDS	0115 983 65 00	0115 983 65 65	
	Peterborough	PORCELANOSA SOUTH EAST	08444 818 957	08444 818 967	
	Reading	PORCELANOSA SOUTH EAST	08444 818 954	08444 818 964	
	Sheffield	PORCELANOSA YORKSHIRE	0114 250 01 08	0114 255 22 65	
	Solihull	PORCELANOSA MIDLANDS	0121 746 64 64	0121 746 64 65	
	Southampton	PORCELANOSA SOUTH EAST	08444 818 956	08444 818 966	
	Warrington	PORCELANOSA NORTH WEST	01925 237 807	01925 237 888	
	Watford	PORCELANOSA SOUTH EAST	08444 818 951	08444 818 961	
	República Democrática del Congo	Báváro	CARABELA S.R.L.	+1 809 466 0020	+1 809 466 2006
Kinshasa		SOCIETE PANACHE	+243 884 1677	+243 983 13893	
La Romana		CARABELA S.R.L.	+1 809 556 3606 / 809 550 9006	+1 809 221 7416	
Santiago		CARABELA S.R.L. - PORCELANOSA	+1 809 971 1234	+1 809 971 6728	
Santo Domingo		CARABELA S.R.L.	+1 809 544 2560	+1 809 541 0818	
Reunión	Saint Denis	L'ESPACE BAIN DOUCHE	+262 212 100	+262 212 101	
	Saint Pierre	L'ESPACE BAIN DOUCHE	+262 353 536	+262 266 394	
Rumania	Bacau	SSAB IMPEX	+40 234 513 957	+40 234 518 436	
	Brasov	DELTA STUDIO BRASOV	0368/402.049		
	Bucarest	DELTA STUDIO CONCEPT STORE	021/411.25.46		
	Bucarest	DELTA STUDIO MILITARI	031/405.82.17		
	Bucarest	GLAMOUR	0321 22932101		
	Bucarest	Porcelines	+40 756 093 720		
	Bucarest	SSAB IMPEX	+40 214 113 009	+40 214 120 097	
	Constanta	DELTA STUDIO CONSTANTA	0241/520.707		
	Iasi	DELTA STUDIO IASI	0232/431.963 / 0730.586.938		
	Piatra-Neam?	DELTA STUDIO PIATRA NEAMT	0233/234.518		
	Pitesti	DELTA STUDIO PITESTI	0248/222.798		
	Ploiesti	DELTA STUDIO PLOIESTI	0244/514.791 / 0723.541.737		
Serbia	Belgrado	CERAMIC BY PORCELANOSA	+381 11 3343026	+381 11 3343297	
	Novi Sad	RACA COMPLETE	+381 21 451 534	+381 21 472 0668	
Singapur	Singapur	FERNANDO MARTIN BENITO	+65 97801472	+65 64621620	
Sudáfrica	Durban	CLASSIC TRADING	+27 31 577 8382	+27 31 577 7056	
	Johannesburg	CLASSIC TRADING	+27 11 656 0400	+27 11 656 0403	
Suecia	Bromma	KAKELPALATZET I BROMMA AB	+46(0)8-56 487 831	+46(0)8-988 620	
	Göteborg	KAKELPALATZET I BÄCKEBOL AB	+46(0)31-571 478	+46(0)31-571 477	
	Katrineholm	KAKELPALATZET I KATRINEHOLM AB	+46(0)150-51 740	+46(0)150-51 775	
	Mölnådal	KAKELPALATZET I MÖLNÅDAL (Central)	+46(0)31-776 50 51	+46(0)31-86 39 62	
	Nyköping	KAKELPALATZET I NYKÖPING AB	+46(0)155-200 999	+46(0)155-211 244	
	Uddevalla	KAKELPALATZET I UDDEVALLA AB	+46(0)522-64 54 00	+46(0)522-64 54	
Suiza	Aubonne	ARGECOM SA	+41(0)21 807 10 10	+41(0)21 808 61 02	
	Mendrisio	NEW FORM SWISS SAGL	41919227356		
Surinam	Paramaribo (Tourtonnelaan)	NV RONANS TRADING	+597 45 1070	+597 450066	
Tailandia	Bangkok	BOONTHAVORN CERAMIC (RATCHADAPISEK)	+66 2275-2029	+66 2275-2057	
	Bangkok	BOONTHAVORN CERAMIC CO. LTD. (PIN-KLAO)	+66 2441-3075	+66 2441-4049	
	Bangkok	BOONTHAVORN CERAMIC CO. LTD. (KASET NAVAMIN)	+66 2791-2777	+66 2943-9058	
	Bangkok	BOONTHAVORN CERAMIC CO. LTD. (PATTAYA)	+66 38 052 222	+66 38 052 221	
	Bangkok	BOONTHAVORN CERAMIC CO. LTD. (SUVARNNABHUMI)	+66 2316-0429	+66 2750-0682	
	Pathumthanee	BOONTHAVORN CERAMIC CO. LTD. (RANGSIT)	+66 2902-0171	+66 2902-0184	
	Prachuabkirkun	BOONTHAVORN CERAMIC CO. LTD. (HUAHIN)	+66 3252-2555 / +66 5488-4144	+66 3252-0141	
	Samutsakon	BOONTHAVORN CERAMIC CO. LTD. (TONBURI-PAKTOR)	+66 2896-4471-2	+66 2896-4473	
	Taiwan	Kaohsiung	NEW CENTURY CONSTRUCTIONAL	+886 7 384 8834	+886 7 387 1043
	Taiwan	Taichung	NEW CENTURY CONSTRUCTIONAL	+886 4 2372 8166	+886 4 2376 2818
Taiwan	Tainan	NEW CENTURY CONSTRUCTIONAL	+886-7-3848834		
Taiwan	Taipei	NEW CENTURY CONSTRUCTIONAL	73845135		
Túnez	Tunis	ETTAAMIR NEGOCE	+21670939459 / +21670939479	21670939379	
Turquia	Istambul	YÜTAS	+90 2 1227 44720	+90 2 1227 20874	
Ucrania	Dnipropetrovsk	EUROPA	(0562) 31-27-53		
	Donetsk	CERAMIC FASHION	(062) 381 23 31		
	Donetsk	NAUTILUS	(062) 387 58 58		
	Kharkiv	CERAMIC FASHION			
	Kharkiv	EUROPA	(572) 23 59 95		
	Kiev	CERAMIC CITY			
	Kyiv	CERAMIC FASHION	(044) 281 07 27		
	Kyiv	CERAMIC FASHION	(044) 246 79 79		
	Kyiv	SALON MILLENNIUM CONCEPT	(044) 279 60 60		
	Lugansk	CERAMIC FASHION	(642) 93-24-13		
	Lviv	AGROMAT INTERIER	(32) 272-87-21		
	Lviv	KERAM MISTO	(32) 293 98 89		
	Lviv	SALON KARMEN	+380 32 244 40 55	+380 32 252 70 94	
Odessa	FIRMENIY SALON PORCELANOSA GRUPO	(482) 37 85 40			
Rivne	CERAMIC FASHION	(362) 64 56 05			
Uzbekistán	Tashkent	PREMIUM CONCEPT	+998(71) 256 29 05		
	Caracas	PROSEIN	+58(2) 1223 929 11	+58(2) 1223 994 60	
Venezuela	Caracas	PROSEIN EL BOSQUE	+58(2) 1276 256 01		
	Caracas	PROSEIN LA CASTELLANA	+58(2) 1226 564 19		

©2013 **butech building technology s.a.**

The contents of this catalogue are protected by virtue of the Spanish Intellectual Property Act, Royal Legislative Decree 1/1996. The partial or total reproduction of this catalogue, without the express authorisation of **butech** is punishable under the Spanish Criminal Code.

butech reserves the right to amend and/or eliminate certain models featured shown in this catalogue without prior warning. The colours of the tiles may differ slightly from the originals. The displays shown in this catalogue are design proposals for advertising purposes. When the material is used in real situations, the installation instructions published by **butech** should be followed.