

PORCELANOSA
C E R A M I C N E W S

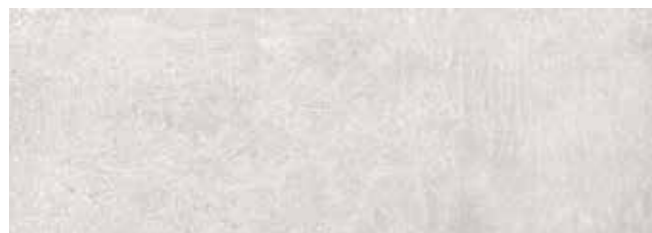
THE FINEST CERAMIC TILES FOR ARCHITECTURAL DESIGN
2017

ÍNDICE DE PRODUCTO
INDEX PRODUCT

2 DAKOTA · 2 THASSOS · 3 NIZA · 6 CAPRI · 7 CAPRI LINEAL
10 LEXINGTON · 11 IBIZA · 12 COLUMBIA · 13 THASSOS 45x120cm · 14 PIETRA BLUE
15 PIETRA BLUE LINEAL · 18 PIETRA BLUE 80x80cm · 19 DAKOTA 59.6x59.6cm
22 MANHATTAN · 28 VIENA · 29 BOLONIA · 29 TORINO · 33 HERITAGE
34 ASPEN PULIDO · 34 THASSOS PULIDO · 34 CARRARA PULIDO · 34 PERISA PULIDO
35 CALACATA PULIDO · 35 BARI PULIDO · 38 OLIMPO PULIDO · 38 MÁRMOL NILO PULIDO
38 TRAVERTINO MEDICI PULIDO · 39 VENEZIA PULIDO · 40 SENA PULIDO

DAKOTA

Revestimiento Monoporosa Rectificado / Wall Tiles Rectified



DAKOTA BONE
31,6x90x0,9cm P3470866 / 100202815 G261
Butech recomienda junta / Butech recommends joint: Colorstuk Rapid n Gris B22502013 / 100004305

PERFIL DAKOTA BONE
1,5x31,6cm P6209131 / 100203829 G77



DAKOTA SILVER
31,6x90x0,9cm P3470867 / 100202833 G261
Butech recomienda junta / Butech recommends joint: Colorstuk Rapid n Manhattan B22502002 / 100004295

PERFIL DAKOTA SILVER
1,5x31,6cm P6209132 / 100203816 G77

THASSOS

Revestimiento Monoporosa Rectificado / Wall Tiles Rectified



THASSOS
31,6x90x0,9cm P3470861 / 100202516 G261
Butech recomienda junta / Butech recommends joint: Colorstuk Rapid n Blanco B22501001 / 100004294

PERFIL THASSOS
1,5x31,6cm P3800014 / 100203828 G77

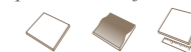
TECHNICAL SPECS · INFORMACIÓN TÉCNICA

| EMBALAJE / PACKING | | | | | | | |
|--------------------|-------|-------|--------|--------|--------|---------|----------|
| FORMATO cm | PZ/CJ | M2/CJ | CJ/PAL | M2/PAL | *KG/CJ | *KG/PAL | Adhesivo |
| 31,6x90cm | 4 | 1,14 | 57 | 64,84 | 17,33 | 987,98 | Fr-one n |
| 1,5x31,6cm | 30 | 0,28 | 42 | 11,94 | 3,6 | 151 | Fr-one n |

*valores aproximados. *approximated values.

NIZA

Revestimiento Monoporosa Rectificado / Wall Tiles Rectified



NIZA LINEAL
31,6x90x0,9cm P3470869 / 100203537 G271
Butech recomienda junta / Butech recommends joint: Colorstuk Rapid n Blanco B22501001 / 100004294

PERFIL NIZA LINEAL
1,5x31,6cm P6209133 / 100203848 G77



NIZA WHITE
31,6x90x0,9cm P3470871 / 100203542 G261
Butech recomienda junta / Butech recommends joint: Colorstuk Rapid n Blanco B22501001 / 100004294

PERFIL NIZA WHITE
1,5x31,6cm P6209133 / 100203848 G77



NIZA GREY
31,6x90x0,9cm P3470870 / 100203536 G271
Butech recomienda junta / Butech recommends joint: Colorstuk Rapid n Blanco B22501001 / 100004294
Colorstuk Rapid n Gris B22502013 / 100004305



NIZA TOPO
31,6x90x0,9cm P3470872 / 100203560 G271
Butech recomienda junta / Butech recommends joint: Colorstuk Rapid n Blanco B22501001 / 100004294
Colorstuk Rapid n Beige B22502016 / 100004308

TECHNICAL SPECS · INFORMACIÓN TÉCNICA

| EMBALAJE / PACKING | | | | | | | |
|--------------------|-------|-------|--------|--------|--------|---------|----------|
| FORMATO cm | PZ/CJ | M2/CJ | CJ/PAL | M2/PAL | *KG/CJ | *KG/PAL | Adhesivo |
| 31,6x90cm | 3 | 0,85 | 66 | 56,31 | 15,45 | 1019,7 | Fr-one n |
| Niza White | 4 | 1,14 | 57 | 64,84 | 17,33 | 987,98 | Fr-one n |
| 1,5x31,6cm | 30 | 0,28 | 42 | 11,94 | 3,6 | 151 | Fr-one n |

*valores aproximados. *approximated values.



VENEZIA TOPO 45x120cm

CAPRI

Revestimiento Monoporosa Rectificado / Wall Tiles Rectified



CAPRI BONE

45x120x1cm

P3580021 / 100202526

G270

Butech recomienda junta / Butech recommends joint:
Colorstuk Rapid n Blanco B22501001 / 100004294

PERFIL CAPRI BONE

1,5x45cm

P3800013 / 100203814

G92



CAPRI STONE

45x120x1cm

P3580029 / 100202546

G270

Butech recomienda junta / Butech recommends joint:
Colorstuk Rapid n Beige B22502016 / 100004308

PERFIL CAPRI STONE

1,5x45cm

P3800016 / 100203815

G92



CAPRI GREY

45x120x1cm

P3580022 / 100202519

G270

Butech recomienda junta / Butech recommends joint:
Colorstuk Rapid n Manhattan B22502002 / 100004295

PERFIL CAPRI GREY

1,5x45cm

P3800015 / 100203834

G92

CAPRI LINEAL

Revestimiento Monoporosa Rectificado / Wall Tiles Rectified



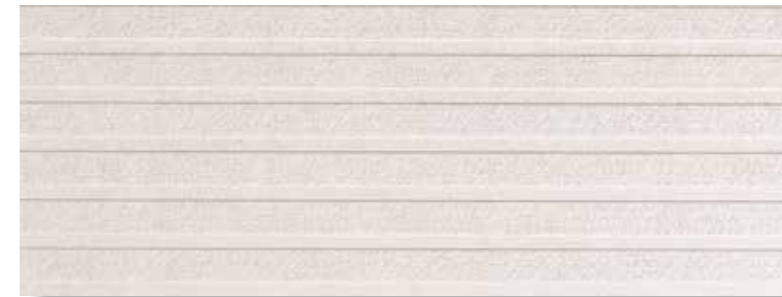
CAPRI LINEAL BONE

45x120x1cm

P3580025 / 100202545

G274

Butech recomienda junta / Butech recommends joint:
Colorstuk Rapid n Blanco B22501001 / 100004294



CAPRI LINEAL STONE

45x120x1cm

P3580030 / 100202571

G274

Butech recomienda junta / Butech recommends joint:
Colorstuk Rapid n Beige B22502016 / 100004308



CAPRI LINEAL GREY

45x120x1cm

P3580026 / 100202539

G274

Butech recomienda junta / Butech recommends joint:
Colorstuk Rapid n Manhattan B22502002 / 100004295

TECHNICAL SPECS · INFORMACIÓN TÉCNICA

EMBALAJE / PACKING



| FORMATO cm | PZ/CJ | M2/CJ | CJ/PAL | M2/PAL | *KG/CJ | *KG/PAL | Adhesivo |
|------------|-------|-------|--------|--------|--------|---------|----------|
| 45x120cm | 3 | 1,62 | 40 | 64,8 | 26,96 | 1078,41 | Fr-one n |
| 1,5x45cm | 20 | 0,27 | 56 | 15,12 | 3,67 | 205,34 | Fr-one n |

*valores aproximados. *approximated values.

TECHNICAL SPECS · INFORMACIÓN TÉCNICA

EMBALAJE / PACKING



| FORMATO cm | PZ/CJ | M2/CJ | CJ/PAL | M2/PAL | *KG/CJ | *KG/PAL | Adhesivo |
|------------|-------|-------|--------|--------|--------|---------|----------|
| 45x120cm | 3 | 1,62 | 40 | 64,8 | 26,96 | 1078,41 | Fr-one n |

*valores aproximados. *approximated values.



CAPRI STONE 45x120cm

LEXINGTON

Revestimiento Monoporosa Rectificado / Wall Tiles Rectified



LEXINGTON COLONIAL
45x120x1cm P3580028 / 100202573 G274 Butech recomienda junta / Butech recommends joint:
Colorstuk Rapid n Manhattan B22502002 / 100004295



LEXINGTON COGNAC
45x120x1cm P3580027 / 100202572 G274 Butech recomienda junta / Butech recommends joint:
Colorstuk Rapid n Tabaco B22502011 / 100004304



LEXINGTON MAPLE
45x120x1cm P3580023 / 100202532 G274 Butech recomienda junta / Butech recommends joint:
Colorstuk Rapid n Beige B22502016 / 100004308



LEXINGTON FRESNO
45x120x1cm P3580031 / 100202567 G274 Butech recomienda junta / Butech recommends joint:
Colorstuk Rapid n Gris B22502013 / 100004305

TECHNICAL SPECS · INFORMACIÓN TÉCNICA

| EMBALAJE / PACKING | | | | | | | |
|--------------------|-------|-------|--------|--------|--------|---------|----------|
| FORMATO cm | PZ/CJ | M2/CJ | CJ/PAL | M2/PAL | *KG/CJ | *KG/PAL | Adhesivo |
| 45x120cm | 3 | 1,62 | 40 | 64,8 | 27,63 | 1105,23 | Fr-one n |

**valores aproximados. *approximated values.*

IBIZA

Revestimiento Monoporosa Rectificado / Wall Tiles Rectified



IBIZA
45x120x1cm P3580033 / 100203543 G270 Butech recomienda junta / Butech recommends joint:
Colorstuk Rapid n Blanco B22501001 / 100004294

PERFIL IBIZA
1,5x45x1cm P3800017 / 100203847 G92



IBIZA TOPO
45x120x1cm P3580035 / 100203545 G274 Butech recomienda junta / Butech recommends joint:
Colorstuk Rapid n Blanco B22501001 / 100004294
Colorstuk Rapid n Beige B22502016 / 100004308



IBIZA SILVER
45x120x1cm P3580036 / 100203544 G274 Butech recomienda junta / Butech recommends joint:
Colorstuk Rapid n Blanco B22501001 / 100004294
Colorstuk Rapid n Gris B22502013 / 100004305



IBIZA GREY
45x120x1cm P3580034 / 100203571 G274 Butech recomienda junta / Butech recommends joint:
Colorstuk Rapid n Blanco B22501001 / 100004294
Colorstuk Rapid n Gris B22502013 / 100004305

TECHNICAL SPECS · INFORMACIÓN TÉCNICA

| EMBALAJE / PACKING | | | | | | | |
|--------------------|-------|-------|--------|--------|--------|---------|----------|
| FORMATO cm | PZ/CJ | M2/CJ | CJ/PAL | M2/PAL | *KG/CJ | *KG/PAL | Adhesivo |
| 45x120cm | 3 | 1,62 | 40 | 64,80 | 26,96 | 1078,41 | Fr-one n |
| 1,5x45cm | 20 | 0,27 | 56 | 15,12 | 3,67 | 205,34 | Fr-one n |

**valores aproximados. *approximated values.*

COLUMBIA

Revestimiento Monoporosa Rectificado / Wall Tiles Rectified



COLUMBIA SILVER
45x120x1cm

P3580032 / 100202862 G296

Butech recomienda junta / Butech recommends joint:
Colorstuk Rapid n Antracita B22502005 / 100004298

THASSOS

Revestimiento Monoporosa Rectificado / Wall Tiles Rectified



THASSOS
45x120x1cm

P3580024 / 100202533 G270

Butech recomienda junta / Butech recommends joint:
Colorstuk Rapid n Blanco B22501001 / 100004294

PERFIL THASSOS
1,5x45x1cm
1,5x120x1cm

P3800014 / 100203828 G92
P3810009 / 100203846 G102

TECHNICAL SPECS · INFORMACIÓN TÉCNICA

EMBALAJE / PACKING

| FORMATO cm | PZ/CJ | M2/CJ | CJ/PAL | M2/PAL | *KG/CJ | *KG/PAL | Adhesivo |
|------------|-------|-------|--------|--------|--------|---------|----------|
| 45x120cm | 3 | 1,62 | 40 | 64,8 | 29,82 | 1192,74 | Fr-one n |

*valores aproximados. *approximated values.



COLUMBIA SILVER 45x120cm

TECHNICAL SPECS · INFORMACIÓN TÉCNICA

EMBALAJE / PACKING

| FORMATO cm | PZ/CJ | M2/CJ | CJ/PAL | M2/PAL | *KG/CJ | *KG/PAL | Adhesivo |
|------------|-------|-------|--------|--------|--------|---------|----------|
| 45x120cm | 3 | 1,62 | 40 | 64,8 | 26,96 | 1078,41 | Fr-one n |
| 1,5x120cm | 15 | 0,54 | 28 | 15,12 | 7,42 | 207,65 | Fr-one n |
| 1,5x45cm | 20 | 0,27 | 56 | 15,12 | 3,67 | 205,35 | Fr-one n |

*valores aproximados. *approximated values.



THASSOS 45x120cm

PIETRA BLUE

Revestimiento Monoporosa Rectificado / Wall Tiles Rectified



PIETRA BLUE SILVER
45x120x1cm

P3470864 / 100202913

G270

Butech recomienda junta / Butech recommends joint:
Colorstuk Rapid n Antracita B22502005 / 100004298

PERFIL BLUE SILVER
1,5x45x1cm

P3800018 / 100203850

G92



PIETRA BLUE STONE
45x120x1cm

P3470865 / 100202914

G270

Butech recomienda junta / Butech recommends joint:
Colorstuk Rapid n Cemento B22502004 / 100004297

PERFIL BLUE STONE
1,5x45x1cm

P3800019 / 100203817

G92

PIETRA BLUE LINEAL

Revestimiento Monoporosa Rectificado / Wall Tiles Rectified



PIETRA BLUE LINEAL SILVER
45x120x1cm

P3470863 / 100202887

G274

Butech recomienda junta / Butech recommends joint:
Colorstuk Rapid n Antracita B22502005 / 100004298



PIETRA BLUE LINEAL STONE
45x120x1cm

P3470862 / 100202875

G274

Butech recomienda junta / Butech recommends joint:
Colorstuk Rapid n Cemento B22502004 / 100004297

TECHNICAL SPECS · INFORMACIÓN TÉCNICA

| EMBALAJE / PACKING | | | | | | | |
|--------------------|-------|-------|--------|--------|--------|---------|----------|
| FORMATO cm | PZ/CJ | MZ/CJ | CJ/PAL | MZ/PAL | *KG/CJ | *KG/PAL | Adhesivo |
| 45x120cm | 3 | 1,62 | 40 | 64,8 | 26,96 | 1078,41 | Fr-one n |
| 1,5x45cm | 20 | 0,27 | 56 | 15,12 | 3,67 | 205,34 | Fr-one n |

*valores aproximados. *approximated values.



#PIETRA BLUE SILVER 45x120cm



PIETRA BLUE SILVER 80x80cm

PIETRA BLUE

Gres Porcellanato Rectificado · Color Masa / Rectified Porcellanato Tiles · Coloured Biscuit



PIETRA BLUE SILVER S-R
80x80x1,1cm P1760127 / 100202826 G369

PIETRA BLUE GRAFITO SILVER S-R
43,5x65,9x1,1cm P1981343 / 100203561 G354

Butech recomienda junta / Butech recommends joint:
Colorstuk Rapid n Antracita B22502005 / 100004298



PIETRA BLUE STONE S-R
80x80x1,1cm P1760126 / 100202842 G369

PIETRA BLUE GRAFITO STONE S-R
43,5x65,9x1,1cm P1981342 / 100203557 G354

Butech recomienda junta / Butech recommends joint:
Colorstuk Rapid n Cemento B22502004 / 100004297



PIETRA BLUE GRAFITO S-R
80x80x1,1cm P1760125 / 100202816 G369

PIETRA BLUE GRAFITO ANTISLIP S-R
43,5x65,9x1,1cm P1981344 / 100203556 G354

Butech recomienda junta / Butech recommends joint:
Colorstuk Rapid n Antracita B22502005 / 100004298

TECHNICAL SPECS · INFORMACIÓN TÉCNICA

EMBALAJE / PACKING

| FORMATO cm | PZ/CJ | M2/CJ | CJ/PAL | M2/PAL | *KG/CJ | *KG/PAL | Adhesivo |
|------------------------------|-------|-------|--------|--------|--------|---------|------------------------|
| 80x80cm | 2 | 1,28 | 40 | 51,2 | 33,32 | 1332,9 | one-flex n / maxifluid |
| 43,5x65,9cm | 3 | 0,86 | 60 | 51,6 | 21,18 | 1270,92 | one-flex n |
| 9x80cm Zócalo | 12 | 0,86 | 42 | 36,29 | 23,16 | 972,72 | one-flex n |
| 31,6x80cm Huella Tec. | 2 | 0,56 | 26 | 14,52 | 14,58 | 379,15 | one-flex n / maxifluid |
| 31,6x80cm Huella Tec. Esq. | 1 | 0,29 | 26 | 7,56 | 7,29 | 189,57 | one-flex n / maxifluid |
| 31,6x65,9cm Huella Tec. | 2 | 0,46 | 40 | 18,4 | 12,34 | 493,58 | one-flex n / maxifluid |
| 31,6x65,9cm Huella Tec. Esq. | 1 | 0,23 | 40 | 9,2 | 6,17 | 246,79 | one-flex n / maxifluid |

*valores aproximados. *approximated values.



INTENSIDAD DE TRÁNSITO PEATONAL: TRÁNSITO INTENSO
INTENSITY OF PEDESTRIAN TRANSIT: HARD TRANSIT

| ZÓCALO | 9x80cm | |
|----------------------------|----------------------|-----|
| PIETRA BLUE GRAFITO | P4160034 / 100203899 | G63 |
| PIETRA BLUE SILVER | P4160035 / 100203896 | G63 |
| PIETRA BLUE STONE | P4160033 / 100203918 | G63 |



· HUELLA TÉCNICA 31,6x80cm

| | | | ESQUINA DERECHA | | ESQUINA IZQUIERDA | |
|----------------------------|----------------------|------|----------------------|------|----------------------|------|
| PIETRA BLUE GRAFITO | P9210461 / 100203880 | G153 | P9210471 / 100203941 | G181 | P9210416 / 100203878 | G181 |
| PIETRA BLUE SILVER | P9210454 / 100203881 | G153 | P9210472 / 100203826 | G181 | P9210464 / 100203888 | G181 |
| PIETRA BLUE STONE | P9210459 / 100203838 | G153 | P9210471 / 100203941 | G181 | P9210463 / 100203878 | G181 |

· HUELLA TÉCNICA 31,6x65,9cm

| | | | ESQUINA DERECHA | | ESQUINA IZQUIERDA | |
|---------------------------------|----------------------|------|----------------------|------|----------------------|------|
| PIETRA BLUE GRAFITO ANT. | P8680276 / 100203851 | G130 | P8680270 / 100203849 | G150 | P8680273 / 100203861 | G150 |
| PIETRA BLUE SILVER ANT. | P8680278 / 100203862 | G130 | P8680271 / 100203835 | G150 | P8680274 / 100203818 | G150 |
| PIETRA BLUE STONE ANT. | P8680277 / 100203852 | G130 | P8680272 / 100203860 | G150 | P8680275 / 100203836 | G150 |

DAKOTA

Gres Porcellanato Rectificado · Color Masa / Rectified Porcellanato Tiles · Coloured Biscuit



DAKOTA SILVER S-R
59,6x59,6x1,03cm P1857051 / 100202911 G354

Butech recomienda junta / Butech recommends joint:
Colorstuk Rapid n Manhattan B22502002 / 100004295



DAKOTA BONE S-R
59,6x59,6x1,03cm P1857052 / 100202910 G354

Butech recomienda junta / Butech recommends joint:
Colorstuk Rapid n Gris B22502013 / 100004305

TECHNICAL SPECS · INFORMACIÓN TÉCNICA

EMBALAJE / PACKING

| FORMATO cm | PZ/CJ | M2/CJ | CJ/PAL | M2/PAL | *KG/CJ | *KG/PAL | Adhesivo |
|------------------------------|-------|-------|--------|--------|--------|---------|------------------------|
| 59,6x59,6cm | 4 | 1,42 | 32 | 45,47 | 37,24 | 1127,62 | one-flex n / maxifluid |
| 9,6x59,6cm Zócalo | 18 | 0,97 | 56 | 54,07 | 23,25 | 1301,92 | one-flex n |
| 31,6x59,6cm Huella Tec. | 2 | 0,42 | 48 | 19,97 | 11,33 | 543,84 | one-flex n / maxifluid |
| 31,6x59,6cm Huella Tec. Esq. | 1 | 0,21 | 48 | 9,98 | 5,67 | 271,92 | one-flex n / maxifluid |

*valores aproximados. *approximated values.



INTENSIDAD DE TRÁNSITO PEATONAL: TRÁNSITO INTENSO
INTENSITY OF PEDESTRIAN TRANSIT: HARD TRANSIT

| ZÓCALO | 9x59,6cm | |
|----------------------|----------------------|-----|
| DAKOTA SILVER | P9210478 / 100203922 | G30 |
| DAKOTA BONE | P9210477 / 100203898 | G30 |



· HUELLA TÉCNICA 31,6x59,6cm

| | | | ESQUINA DERECHA | | ESQUINA IZQUIERDA | |
|----------------------|----------------------|------|----------------------|------|----------------------|------|
| DAKOTA SILVER | P9210455 / 100203873 | G130 | P9210462 / 100203865 | G150 | P9210460 / 100203859 | G150 |
| DAKOTA BONE | P9210456 / 100203866 | G130 | P9210457 / 100203837 | G150 | P9210458 / 100203858 | G150 |



DAKOTA BONE 59.6X59.6cm

MANHATTAN

Gres Porcellanato Rectificado · Color Masa / Rectified Porcellanato Tiles · Coloured Biscuit



MANHATTAN SILVER P-R
29,4x180x1,2cm P1680021 / 100190056
19,3x180x1,2cm P1670021 / 100190073
29,4x120x1,1cm P1876120 / 100190053
19,3x120x1,1cm P1880327 / 100190046
Butech recomienda junta / Butech recommends joint: Colorstuk Rapid n Cemento B22502004 / 100004297

MANHATTAN SILVER ANTISLIP
19,3x180x1,2cm P1670022 / 100190081
G386
G386
G384
G384
R11 SRV NANO-KER



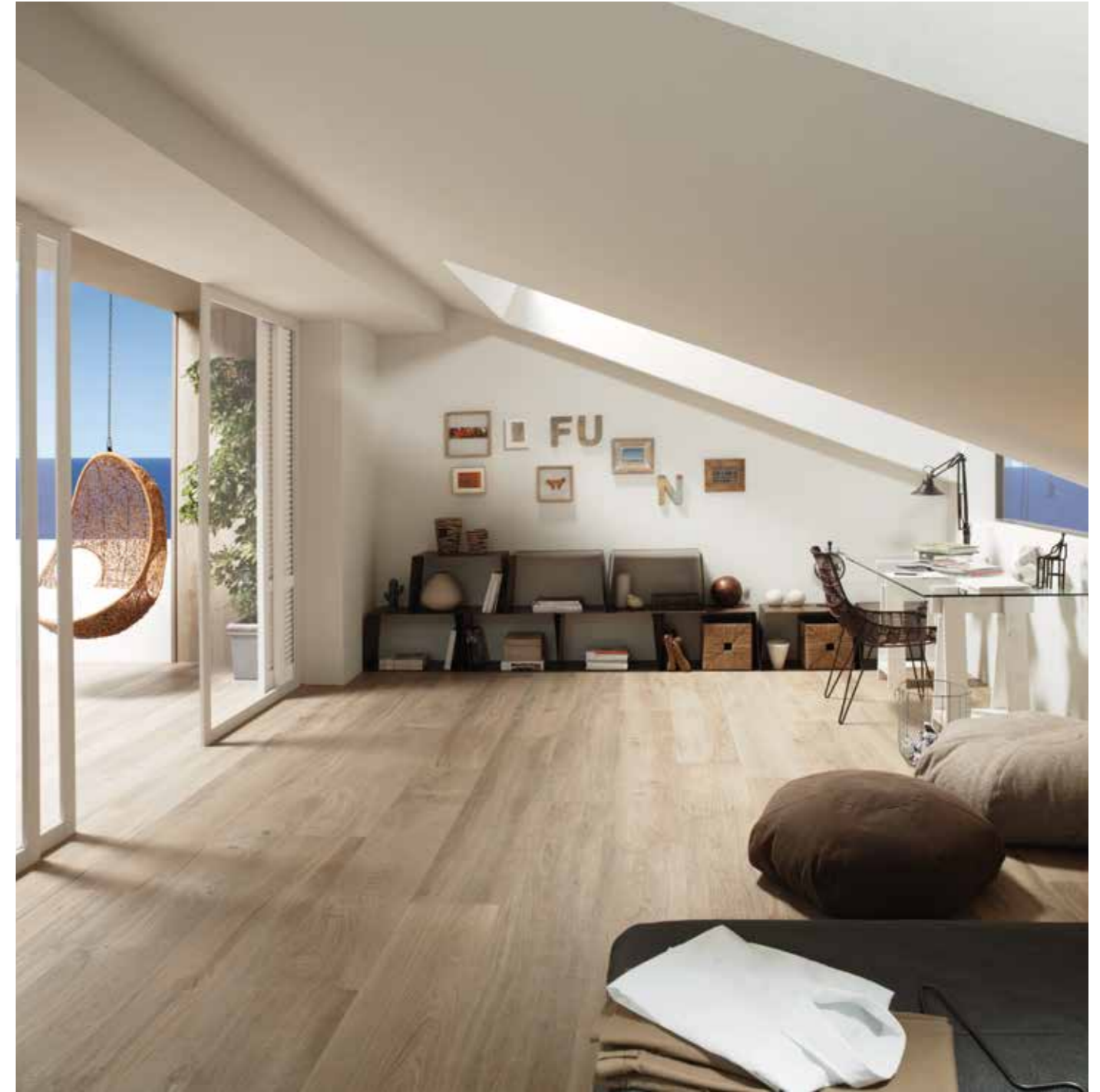
MANHATTAN NATURAL P-R
29,4x180x1,2cm P1680018 / 100190064
19,3x180x1,2cm P1670018 / 100190063
29,4x120x1,1cm P1876118 / 100190045
19,3x120x1,1cm P1880328 / 100190044
Butech recomienda junta / Butech recommends joint: Colorstuk Rapid n Manhattan B22502002 / 100004295

MANHATTAN NATURAL ANTISLIP
19,3x180x1,2cm P1670017 / 100190072
G386
G386
G384
G384
R11 SRV NANO-KER



MANHATTAN COLONIAL P-R
29,4x180x1,2cm P1680022 / 100190061
19,3x180x1,2cm P1670020 / 100190055
29,4x120x1,1cm P1876116 / 100190052
19,3x120x1,1cm P1880329 / 100190042
Butech recomienda junta / Butech recommends joint: Colorstuk Rapid n Manhattan B22502002 / 100004295

MANHATTAN COLONIAL ANTISLIP
19,3x180x1,2cm P1670024 / 100190062
G386
G386
G384
G384
R11 SRV NANO-KER



MANHATTAN NATURAL 19,3x180cm & 29,4x180cm.

TECHNICAL SPECS · INFORMACIÓN TÉCNICA

| EMBALAJE / PACKING | | | | | | | |
|----------------------------|-------|-------|--------|--------|--------|---------|------------------------|
| FORMATO cm | PZ/CJ | MZ/CJ | CJ/PAL | MZ/PAL | *KG/CJ | *KG/PAL | Adhesivo |
| 29,4x180cm | 2 | 1,06 | 50 | 52,92 | 31,11 | 1555,3 | one-flex n |
| 19,3x180cm | 3 | 1,04 | 54 | 56,28 | 29,97 | 1618,4 | one-flex n |
| 29,4x120cm | 3 | 1,06 | 40 | 42,34 | 29,05 | 1161,96 | one-flex n |
| 19,3x120cm | 5 | 1,16 | 48 | 55,58 | 31,75 | 1524,48 | one-flex n |
| 29,4x120cm Huella Tec. | 2 | 0,78 | 26 | 20,4 | 20,67 | 537,74 | one-flex n / maxifluid |
| 29,4x120cm Huella Tec.Esq. | 1 | 0,4 | 26 | 10,48 | 10,34 | 268,74 | one-flex n / maxifluid |

*valores aproximados. *approximated values.

| ZÓCALO PRO-SKIRTING 10x180cm | |
|------------------------------|-----------------------|
| MANHATTAN COLONIAL | B79999020 / 100189248 |
| MANHATTAN NATURAL | B79999018 / 100191490 |
| MANHATTAN SILVER | B79999019 / 100191481 |



| - HUELLA TÉCNICA 29,4x120cm | | ESQUINA DERECHA | | ESQUINA IZQUIERDA | |
|-----------------------------|----------------------|-----------------|---|-------------------|----------------------|
| MANHATTAN SILVER | P1876138 / 100191200 | G171 | P1876135 / 100191164 | G185 | P1876137 / 100191184 |
| MANHATTAN SILVER ANT. | P1876139 / 100191210 | G171 | P1876136 / 100191182 | G185 | P1876140 / 100191169 |
| MANHATTAN NATURAL | P1876122 / 100190906 | G171 | P1876125 / 100190940 | G185 | P1876126 / 100190933 |
| MANHATTAN NATURAL ANT. | P1876123 / 100190934 | G171 | P1876124 / 100190941 | G185 | P1876121 / 100190928 |
| MANHATTAN COLONIAL | P1876130 / 100191061 | G171 | P1876127 / 100191038 | G185 | P1876128 / 100191027 |
| MANHATTAN COLONIAL ANT. | P1876132 / 100191071 | G171 | P1876129 / 100191026 | G185 | P1876131 / 100191060 |
| - HUELLA TÉCNICA 29,4x180cm | | G193 | - HUELLA TÉCNICA ESQ. DER/IZQ. MEC 29,4x180cm | | G196 |



MANHATTAN COGNAC P-R

29,4x180x1,2cm P1680020 / 100190048
 19,3x180x1,2cm P1670025 / 100190050
 29,4x120x1,1cm P1876117 / 100190034
 19,3x120x1,1cm P1880325 / 100190027

Butech recomienda junta / Butech recommends joint: Colorstuk Rapid n Tabaco B22502011 / 100004304

G386
G386
G384
G384

MANHATTAN COGNAC ANTISLIP

19,3x180x1,2cm P1670019 / 100190054

G386



MANHATTAN MAPLE P-R

29,4x180x1,2cm P1680019 / 100190039
 19,3x180x1,2cm P1670016 / 100190038
 29,4x120x1,1cm P1876119 / 100190060
 19,3x120x1,1cm P1880326 / 100190043

Butech recomienda junta / Butech recommends joint: Colorstuk Rapid n Beige B22502016 / 100004308

G386
G386
G384
G384

MANHATTAN MAPLE ANTISLIP

19,3x180x1,2cm P1670023 / 100190071

G386



MANHATTAN FRESNO P-R

29,4x180x1,2cm P1680030 / 100202541
 19,3x180x1,2cm P1670026 / 100202489
 29,4x120x1,1cm P1876101 / 100202518
 19,3x120x1,1cm P1880334 / 100202540

Butech recomienda junta / Butech recommends joint: Colorstuk Rapid n Gris B22502013 / 100004305

G386
G386
G384
G384

MANHATTAN FRESNO ANTISLIP

19,3x180x1,2cm P1670027 / 100202550

G386



MANHATTAN COGNAC 19,3x180cm & 29,4x180cm.

TECHNICAL SPECS · INFORMACIÓN TÉCNICA

EMBALAJE / PACKING

| FORMATO cm | PZ/CJ | M2/CJ | CJ/PAL | M2/PAL | *KG/CJ | *KG/PAL | Adhesivo |
|----------------------------|-------|-------|--------|--------|--------|---------|------------------------|
| 29,4x180cm | 2 | 1,06 | 50 | 52,92 | 31,11 | 1555,3 | one-flex n |
| 19,3x180cm | 3 | 1,04 | 54 | 56,28 | 29,97 | 1618,4 | one-flex n |
| 29,4x120cm | 3 | 1,06 | 40 | 42,34 | 29,05 | 1161,96 | one-flex n |
| 19,3x120cm | 5 | 1,16 | 48 | 55,58 | 31,75 | 1524,48 | one-flex n |
| 29,4x120cm Huella Tec. | 2 | 0,78 | 26 | 20,4 | 20,67 | 537,74 | one-flex n / maxifluid |
| 29,4x120cm Huella Tec.Esq. | 1 | 0,4 | 26 | 10,48 | 10,34 | 268,74 | one-flex n / maxifluid |

*valores aproximados. *approximated values.



ZÓCALO PRO-SKIRTING 10x180cm
MANHATTAN MAPLE B79999017 / 100191461
MANHATTAN COGNAC B79999016 / 100191470
MANHATTAN FRESNO B79999064 / 100204445



· HUELLA TÉCNICA 29,4x120cm

MANHATTAN COGNAC P1876149 / 100191335 G171
MANHATTAN COGNAC ANT. P1876151 / 100191360 G171
MANHATTAN MAPLE P1876150 / 100191351 G171
MANHATTAN MAPLE ANT. P1876152 / 100191336 G171
MANHATTAN FRESNO P1876166 / 100203895 G171
MANHATTAN FRESNO ANT. P1876167 / 100203912 G171

· HUELLA TÉCNICA 29,4x180cm

G193

ESQUINA DERECHA

P1876141 / 100191269 G185
 P1876142 / 100191294 G185
 P1876144 / 100191309 G185
 P1876143 / 100191299 G185
 P1876164 / 100203892 G185
 P1876168 / 100203903 G185

ESQUINA IZQUIERDA

P1876145 / 100191341 G185
 P1876146 / 100191323 G185
 P1876147 / 100191345 G185
 P1876148 / 100191332 G185
 P1876169 / 100203928 G185
 P1876165 / 100203893 G185

· HUELLA TÉCNICA ESQ. DER/IZQ. MEC 29,4x180cm

G196



VIENA

Gres Porcellanato Rectificado · Color Masa / Rectified Porcellanato Tiles · Coloured Biscuit



VIENA COGNAC S-R
80x80x1,1cm P1760118 / 100202561 G378
60,2x60,2x1,03cm P1857039 / 100202535 G366
Butech recomienda junta / Butech recommends joint:
Colorstuk Rapid n Tabaco B22502011 / 100004304



VIENA COLONIAL S-R
80x80x1,1cm P1760116 / 100202544 G378
60,2x60,2x1,03cm P1857041 / 100202543 G366
Butech recomienda junta / Butech recommends joint:
Colorstuk Rapid n Manhattan B22502002 / 100004295



VIENA NATURAL S-R
80x80x1,1cm P1760119 / 100202552 G378
60,2x60,2x1,03cm P1857040 / 100202536 G366
Butech recomienda junta / Butech recommends joint:
Colorstuk Rapid n Manhattan B22502002 / 100004295



VIENA FRESNO S-R
80x80x1,1cm P1760120 / 100202563 G378
60,2x60,2x1,03cm P1857042 / 100202562 G366
Butech recomienda junta / Butech recommends joint:
Colorstuk Rapid n Gris B22502013 / 100004305

TECHNICAL SPECS · INFORMACIÓN TÉCNICA

| EMBALAJE / PACKING | | | | | | | |
|--------------------|-------|-------|--------|--------|--------|---------|----------|
| FORMATO cm | PZ/CJ | MZ/CJ | CJ/PAL | MZ/PAL | *KG/CJ | *KG/PAL | Adhesivo |
| 80x80cm | 2 | 1,28 | 32 | 41,06 | 31,81 | 1017,8 | Fr-one n |
| 60,2x60,2cm | 4 | 1,13 | 40 | 45,31 | 31,81 | 1272,26 | Fr-one n |

*valores aproximados. *approximated values.

BOLONIA

Gres Porcellanato Rectificado · Color Masa / Rectified Porcellanato Tiles · Coloured Biscuit



BOLONIA COLONIAL S-R
80x80x1,1cm P1760115 / 100202554 G372
59,6x59,6x1,03cm P1857054 / 100202828 G359
Butech recomienda junta / Butech recommends joint:
Colorstuk Rapid n Manhattan B22502002 / 100004295



BOLONIA COGNAC S-R
80x80x1,1cm P1760117 / 100202553 G372
59,6x59,6x1,03cm P1857055 / 100202827 G359
Butech recomienda junta / Butech recommends joint:
Colorstuk Rapid n Tabaco B22502011 / 100004304

TORINO

Gres Porcellanato Rectificado · Color Masa / Rectified Porcellanato Tiles · Coloured Biscuit



TORINO COLONIAL S-R
80x80x1,1cm P1760122 / 100202570 G372
59,6x59,6x1,03cm P1857057 / 100202818 G359
Butech recomienda junta / Butech recommends joint:
Colorstuk Rapid n Manhattan B22502002 / 100004295



TORINO COGNAC S-R
80x80x1,1cm P1760121 / 100202566 G372
59,6x59,6x1,03cm P1857056 / 100202817 G359
Butech recomienda junta / Butech recommends joint:
Colorstuk Rapid n Tabaco B22502011 / 100004304

TECHNICAL SPECS · INFORMACIÓN TÉCNICA

| EMBALAJE / PACKING | | | | | | | |
|--------------------|-------|-------|--------|--------|--------|---------|----------|
| FORMATO cm | PZ/CJ | MZ/CJ | CJ/PAL | MZ/PAL | *KG/CJ | *KG/PAL | Adhesivo |
| 80x80cm | 2 | 1,28 | 40 | 51,2 | 33,32 | 1332,9 | Fr-one n |
| 59,6x59,6cm | 4 | 1,42 | 32 | 45,47 | 35,24 | 1127,62 | Fr-one n |

*valores aproximados. *approximated values.



BOLONIA COLONIAL 80X90cm



HERITAGE NATURAL 80X80cm

HERITAGE

Gres Porcellanato Rectificado · Color Masa / Rectified Porcellanato Tiles · Coloured Biscuit



HERITAGE COGNAC S-R
80x80x1,1cm P1760112 / 100190915 G372
Butech recomienda junta / Butech recommends joint:
Colorstuk Rapid n Tabaco B22502011 / 100004304



HERITAGE COLONIAL S-R
80x80x1,1cm P1760113 / 100190902 G372
Butech recomienda junta / Butech recommends joint:
Colorstuk Rapid n Manhattan B22502002 / 100004295



HERITAGE NATURAL S-R
80x80x1,1cm P1760114 / 100190916 G372
Butech recomienda junta / Butech recommends joint:
Colorstuk Rapid n Manhattan B22502002 / 100004295

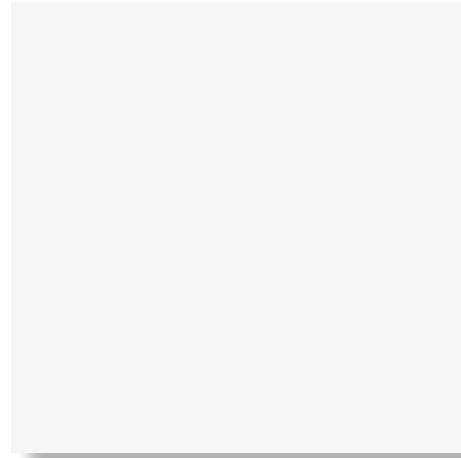
TECHNICAL SPECS · INFORMACIÓN TÉCNICA

| EMBALAJE / PACKING | | | | | | | |
|--------------------|-------|-------|--------|--------|--------|---------|----------|
| FORMATO cm | PZ/CJ | M2/CJ | CJ/PAL | M2/PAL | *KG/CJ | *KG/PAL | Adhesivo |
| 80x80cm | 2 | 1,28 | 40 | 51,2 | 33,32 | 1332,9 | Fr-one n |

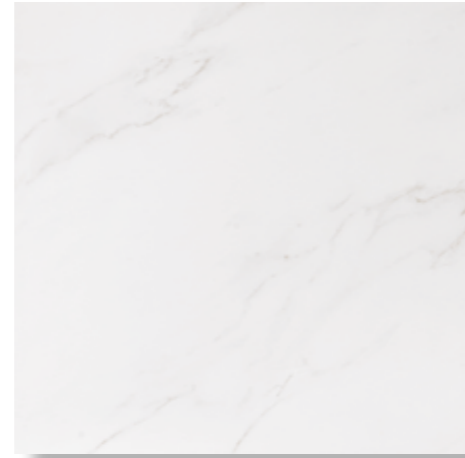
*valores aproximados. *approximated values.

ASPEN / THASSOS

Gres Porcellanato Rectificado / Rectified Porcellanato Tiles



ASPEN PULIDO S-R
79,2x79,2x1,1cm P1760123 / 100202622 G389
58,6x58,6x1,0,3cm P1857044 / 100202631 G370
Butech recomienda junta / Butech recommends joint:
Colorstuk Rapid n Blanco B22501001 / 100004294



THASSOS PULIDO S-R
79,2x79,2x1,1cm P1760124 / 100202607 G389
58,6x58,6x1,0,3cm P1857045 / 100202606 G370
Butech recomienda junta / Butech recommends joint:
Colorstuk Rapid n Blanco B22501001 / 100004294

CALACATA

Gres Porcellanato Rectificado / Rectified Porcellanato Tiles



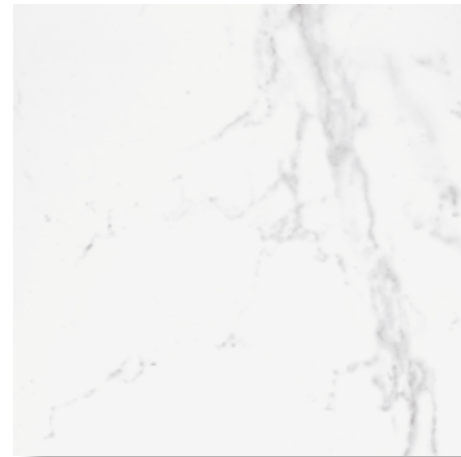
CALACATA SILVER PULIDO S-R
58,6x58,6x1,0,3cm P9210488 / 100204023 G370
Butech recomienda junta / Butech recommends joint:
Colorstuk Rapid n Blanco B22501001 / 100004294



CALACATA GOLD PULIDO S-R
58,6x58,6x1,0,3cm P9210487 / 100204015 G370
Butech recomienda junta / Butech recommends joint:
Colorstuk Rapid n Blanco B22501001 / 100004294

CARRARA / PERSIA

Gres Porcellanato Rectificado / Rectified Porcellanato Tiles



CARRARA BLANCO PULIDO S-R
58,6x58,6x1,0,3cm P9210483 / 100204044 G370
Butech recomienda junta / Butech recommends joint:
Colorstuk Rapid n Blanco B22501001 / 100004294



PERSIA PULIDO S-R
58,6x58,6x1,0,3cm P9210479 / 100204034 G370
Butech recomienda junta / Butech recommends joint:
Colorstuk Rapid n Blanco B22501001 / 100004294

BARI

Gres Porcellanato Rectificado / Rectified Porcellanato Tiles



BARI BLANCO PULIDO S-R
58,6x58,6x1,0,3cm P9210485 / 100204043 G370
Butech recomienda junta / Butech recommends joint:
Colorstuk Rapid n Blanco B22501001 / 100004294

TECHNICAL SPECS · INFORMACIÓN TÉCNICA

| EMBALAJE / PACKING | | | | | | | |
|--------------------|-------|-------|--------|--------|--------|---------|----------|
| FORMATO cm | PZ/CJ | M2/CJ | CJ/PAL | M2/PAL | *KG/CJ | *KG/PAL | Adhesivo |
| 79,2x79,2cm | 2 | 1,25 | 32 | 32,97 | 25,65 | 1332,9 | Fr-one n |
| 58,6x58,6cm | 3 | 1,03 | 40 | 50,18 | 33,32 | 820,81 | Fr-one n |

*valores aproximados. *approximated values.

TECHNICAL SPECS · INFORMACIÓN TÉCNICA

| EMBALAJE / PACKING | | | | | | | |
|--------------------|-------|-------|--------|--------|--------|---------|----------|
| FORMATO cm | PZ/CJ | M2/CJ | CJ/PAL | M2/PAL | *KG/CJ | *KG/PAL | Adhesivo |
| 58,6x58,6cm | 3 | 1,03 | 32 | 32,97 | 25,65 | 820,81 | Fr-one n |

*valores aproximados. *approximated values.



OLIMPO / MÁRMOL NILO

Gres Porcellanato Rectificado / Rectified Porcellanato Tiles



OLIMPO MARFIL PULIDO S-R
58,6x58,6x1,0,3cm P9210481 / 100204046 G370
Butech recomienda junta / Butech recommends joint:
Colorstuk Rapid n Marfil B22502009 / 100004302



MÁRMOL NILO MARFIL PULIDO S-R
58,6x58,6x1,0,3cm P9210482 / 100204045 G370
Butech recomienda junta / Butech recommends joint:
Colorstuk Rapid n Gris B22502013 / 100004305

VENEZIA

Gres Porcellanato Rectificado / Rectified Porcellanato Tiles



VENEZIA MARFIL PULIDO S-R
58,6x58,6x1,0,3cm P9210481 / 100204047 G370
Butech recomienda junta / Butech recommends joint:
Colorstuk Rapid n Cemento B22502004 / 100004297



VENEZIA TOPO PULIDO S-R
58,6x58,6x1,0,3cm P9210480 / 100204049 G370
Butech recomienda junta / Butech recommends joint:
Colorstuk Rapid n Manhattan B22502002 / 100004295

TRAVERTINO MEDICI

Gres Porcellanato Rectificado / Rectified Porcellanato Tiles



TRAVERTINO MEDICI PULIDO S-R
58,6x58,6x1,0,3cm P1857043 / 100202640 G370
Butech recomienda junta / Butech recommends joint:
Colorstuk Rapid n Beige B22502016 / 100004308



VENEZIA PULPIS PULIDO S-R
58,6x58,6x1,0,3cm P9210486 / 100204048 G370
Butech recomienda junta / Butech recommends joint:
Colorstuk Rapid n Negro B22502006 / 100004299

TECHNICAL SPECS · INFORMACIÓN TÉCNICA

| EMBALAJE / PACKING | | | | | | | |
|--------------------|-------|-------|--------|--------|--------|---------|----------|
| FORMATO cm | PZ/CJ | MZ/CJ | CJ/PAL | MZ/PAL | *KG/CJ | *KG/PAL | Adhesivo |
| 58,6x58,6cm | 3 | 1,03 | 32 | 32,97 | 25,65 | 820,81 | Fr-one n |

*valores aproximados. *approximated values.

TECHNICAL SPECS · INFORMACIÓN TÉCNICA

| EMBALAJE / PACKING | | | | | | | |
|--------------------|-------|-------|--------|--------|--------|---------|----------|
| FORMATO cm | PZ/CJ | MZ/CJ | CJ/PAL | MZ/PAL | *KG/CJ | *KG/PAL | Adhesivo |
| 58,6x58,6cm | 3 | 1,03 | 32 | 32,97 | 25,65 | 820,81 | Fr-one n |

*valores aproximados. *approximated values.

SENA
Gres Porcellanato Rectificado / Rectified Porcellanato Tiles




SENA ACERO PULIDO S-R
58,6x58,6x1,0,3cm P1857050 / 100202863 G370
Butech recomienda junta / Butech recommends joint.
Colorstuk Rapid n Manhattan B22502002 / 100004295



SENA CALIZA PULIDO S-R
58,6x58,6x1,0,3cm P1857046 / 100202881 G370
Butech recomienda junta / Butech recommends joint.
Colorstuk Rapid n Gris B22502013 / 100004305

TECHNICAL SPECS · INFORMACIÓN TÉCNICA

| EMBALAJE / PACKING | | | | | | |  |
|--------------------|-------|-------|--------|--------|--------|---------|---|
| FORMATO cm | PZ/CJ | MZ/CJ | CJ/PAL | MZ/PAL | *KG/CJ | *KG/PAL | Adhesivo |
| 58,6x58,6cm | 3 | 1,03 | 32 | 32,97 | 25,65 | 820,81 | Fr-one n |

**valores aproximados. *approximated values.*

2017 - CATALOGO Nº P6 - 1/04

PORCELANOSA S.A. se reserva el derecho de modificar y/o suprimir ciertos modelos expuestos en este catálogo sin previo aviso. Los colores de las piezas pueden presentar ligeras diferencias respecto a los originales. Los ambientes se muestran en este catálogo son sugerencias decorativas de carácter publicitario debiéndose utilizar en la instalación real las instrucciones de colocación editadas por PORCELANOSA.

2017 PORCELANOSA

El contenido de este catálogo está protegido por la Ley de Propiedad Intelectual, Real Decreto Legislativo 1/1996. Cualquier reproducción del mismo, en parte o en su totalidad, sin autorización expresa de PORCELANOSA puede ser sancionada conforme el Código Penal.

2017 - CATALOGUE Nº P6 - 1/04

PORCELANOSA S.A. reserves the right to modify and/or discontinue certain models displayed in this catalogue. The colours of pieces displayed herein may differ slightly from originals. The settings shown in this catalogue are design proposals for advertising purposes. In real situations in which the tiles are laid, the installation instructions published by PORCELANOSA should be followed.

2017 PORCELANOSA

The contents of this catalogue are protected by virtue of the Spanish Intellectual Property Act, Royal Legislative Decree 1/1996. The partial or total reproduction of this catalogue, without the express authorisation of PORCELANOSA is punishable under the Spanish Criminal Code.

*Coordinación / Co-ordination. Dpto. Diseño y Publicidad PORCELANOSA Diseño /
Design. Dpto. Diseño y Publicidad PORCELANOSA*





BY APPOINTMENT TO
H.M. THE PRINCE OF WALES
MANUFACTURER AND DISTRIBUTOR
OF CERAMIC TILES AND BUILDING PRODUCTS.
PORCELANOSA GROUP LIMITED

PORCELANOSA Grupo